



%

Boston College

FACT BOOK

&




1985-86



\$






Boston College

Fact Book

1985-86



Contents

Table of Contents

	Page
Foreword	1
Boston College — A Brief History	3
Boston College Profile	5
Administration and Faculty	
Trustees of Boston College, December, 1972 — September, 1987	8
Chart of Administration	8
Board of Trustee Membership	9
Board of Trustee Chairmen	9
Trustee Associate Membership	10
Officers of the University	11
Academic Deans	12
Department Chairmen and Chairwomen	12
University Administrators	13
Professional, Administrative and Support Staff Personnel	14
Faculty:	
by School and Rank	15
Full-Time Equivalent by School	15
by School and Tenure Status	16
by School and Sex	16
by Highest Earned Degree and Rank	17
by Highest Earned Degree and Sex	17
by Rank and Sex	17
Full-Time Faculty, Teaching Assistants, Teaching Fellows:	
by School and Department	18
Average Faculty Compensation:	
by Rank, AAUP Category I, 1985-1986	19
Boston College Faculty — For the Ten Years Ended May 31, 1986	19
Students	
Freshmen Enrollment by Year and Sex (Full-Time)	22
Freshmen Enrollees — SAT Averages by Class	22
Freshmen Applications, Acceptances and Enrollment (Full-Time)	22
Class of 1990 Applications and Enrollees — Geographic Distribution	23
Undergraduate Transfer Students:	
Applications, Acceptances and Enrollment (Full-Time)	24
by Type of Previous Institution and Sex	24
Enrollment:	
Graduate and Undergraduate, Full- and Part-Time	25
Undergraduate, Day and Evening, and Graduate	25
Undergraduate, by School	26
Graduate, by School	26
Graduate, by Degree Program and Discipline	27
Undergraduate and Graduate, by Sex	28
Full-Time Equivalent	29

	Page
Summer Session	29
Evening College	30
Geographic Distribution of Students	31
International Students and Scholars, 1985-1986:	
by School	32
by Class or Program	32
by Sex and Program	32
by Country	33
Minority Enrollment	34
Veteran Enrollment	34
Undergraduate Degrees Conferred:	
by Degree and Number of Majors	35
by Major	36
by School and by Major	37
Undergraduate and Graduate Degrees Conferred by Degree and Sex	38
Undergraduate and Graduate Financial Aid:	
Dollars	39
Number of Awards	39
Health Services	40
University Counseling Services:	
Number of Students, Faculty-Staff Served	41
Services Provided to Undergraduate and Graduate Students	41
<hr/>	
Alumni	
Boston College Alumni Clubs	44
Alumni Association Board of Directors, 1986-1987	44
Alumni Awards	44
Comparative Regional Analysis	45
Geographic Analysis by State	45
Living Alumni by Primary School, Sex and Class	46
Alumni Donors by Primary School and Class	48
Gifts to the University	50
Individual Donors by Giving Club	50
<hr/>	
Physical Plant	
Buildings Related to Boston College Operation	54
Boston College Properties	56
Facility Capacities	57
Dining Facilities	58
Offices	58
Classrooms	59
Summary of Building Use	59
Residence Hall Capacities	60

Contents

	Page
<hr/>	
Finance	
Highlights of Financial Operations	64
Tuition Restated in 1967 Dollars	64
Tuition and Fees — For the Ten Years Ending May 31, 1986	65
Summary, Contract and Grant Awards	66
Contracts and Grants, Source and Application	67
Selected Contract and Grant Awards	68
<hr/>	
Libraries	
Boston College Libraries	72
Expenditures for Library Materials	72
Holdings by Individual Libraries	72
Circulation Statistics	72
Special Library Services	73
Special Collections	74
University Archives	75
Language Laboratory	75
<hr/>	
Athletics	
John A. "Snooks" Kelley	78
The Year in Review:	
Sports Participation Levels	79
Intercollegiate Athletics	80
Varsity Sports Records	81
Varsity Football Schedules, 1986–1989	82
Varsity Hockey Schedule, 1986–1987	83
Varsity Basketball Schedule, 1986–1987	83
<hr/>	
General Information	
Founder and Presidents	86
Honorary Degrees Awarded, 1952–1986	87
Types of Degrees Conferred	89
Honorary Degrees	89
Association Memberships	90
Accrediting Agencies	90
Academic Department Locations	91
Academic Calendar	92
Sources	92
Index	93
Campus Maps	94

Foreword

The *Boston College Fact Book* is a summary of significant statistics gathered from various sources throughout the University. Once again, we wish to extend sincere thanks and appreciation for the excellent cooperation and assistance received from these many sources.

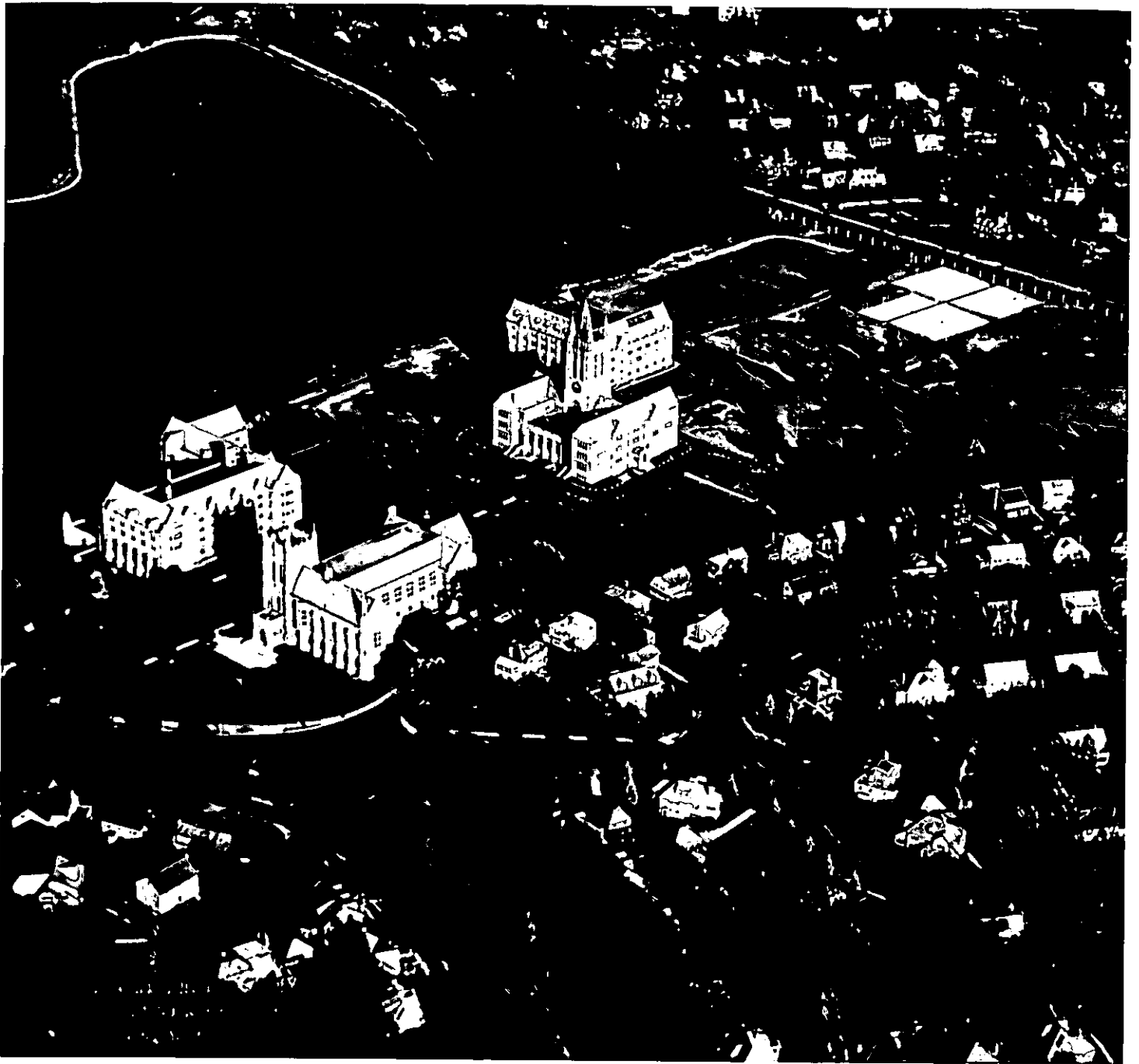
The purpose of the *Fact Book* is to produce a single-source publication and reference document touching upon and integrating all aspects of the institution's people and its operations. We do wish to point out to all users that the information presented herein was compiled at a specific time — September-October, 1986 — to reflect the Academic Year 1985-1986, as well as the most current enrollment statistics for 1986-1987.

The majority of the information is extracted from management reports produced on a regular basis by the various source offices. When reviewing the figures presented we advise you to always note the time frame referenced in the individual tables, and to contact responsible offices should you have further questions.

With this 15th edition, we continue our efforts to make the *Fact Book* as current as possible, as well as an historical overview. We welcome suggestions for additional data and improvements.

Fred B. Mills, Editor
Office of the Financial Vice President and
Treasurer

December, 1986



St. Mary's Hall (1917), Bapst Library (1928), Gasson Hall (1913), and Devlin Hall (1924), circa 1937.

Boston College A Brief History

Boston College was founded by the Society of Jesus in 1863, and is one of twenty-eight Jesuit colleges and universities in the United States. With three teachers and twenty-two students, the school opened its doors on September 5, 1864. While it remained a small liberal arts college, the faculty was predominantly Jesuit, but today's full-time faculty is comprised of 41 Jesuits and 525 laymen and women. Part-time faculty positions are held by 21 Jesuits, in addition to 22 Jesuit members of the university administration.

Originally located on Harrison Avenue in the South End of Boston, where it shared quarters with the Boston College High School, the College outgrew its urban setting toward the end of its first fifty years. A new location was selected in Chestnut Hill, then almost rural, and four parcels of land were acquired in 1907. A design competition for the development of the campus was won by the firm of Maginnis and Walsh, and ground was broken on June 19, 1909, for the construction of Gasson Hall. It is located on the site of the Lawrence farmhouse, in the center of the original tract of land purchased by Father Gasson, and is built largely of stone taken from a quarry which occupied part of the sites of Devlin, Higgins, and Cushing Halls. The foundations were blasted out of solid ledge. Because of its historic value, Gasson was completely restored in 1976 in order to preserve its familiar Gothic spires for future generations of students and alumni.

Later purchases doubled the size of the property, with the addition of the upper campus in 1941, and the lower campus with the purchase of the Lawrence Basin and adjoining land in 1949. In 1974 Boston College acquired Newton College of the Sacred Heart, a mile-and-a-half from the main campus. With fifteen handsome Georgian buildings standing in a park-like estate of forty acres, it is now the site of the Boston College Law School, as well as several academic departments, and dormitories housing over 800 students, primarily freshmen.

Though incorporated as a University since its beginning, it was not until its second half-century that Boston College began to fill out the dimensions of its University charter. The Summer Session was inaugurated in 1924; the Graduate School of Arts and Sciences in 1925; the Law School, 1929; the Evening College, 1929; the Graduate School of Social Work, 1936; the College of Business Administration, 1938. The latter, along with its Graduate School established in 1957, is now known as the School of Management. The Schools of Nursing and Education were founded in 1947 and 1952, respectively. Weston Observatory, founded in 1928, was accepted as a Department of Boston College in 1947, offering courses in geophysics and geology to graduate students.

In 1927 Boston College conferred one earned bachelor's degree and fifteen master's degrees on women through the Extension Division, the precursor of the Graduate School of Arts and Sciences, the Evening College, and the Summer Session. Today's women students comprise 58 percent of the University's enrollment, and 42 percent of a total alumni body of over 88,000.

Now the fourth largest private university in New England, with full- and part-time enrollment of over 14,000, Boston College consists of eleven schools, colleges, and institutes offering thirteen degree programs and one certification program.



Boston College Profile

Admissions (Class of 1990)	
Applicants	14,986
Enrollees:	
Men	997
Women	<u>1,198</u>
Total Freshmen Class	2,195
Enrollment (Full- and Part-Time 1986-1987)	
Undergraduate	10,231
Graduate	<u>3,762</u>
Total Enrollment	13,993
Faculty (1985-1986)	
Full-Time Faculty	566
Part-Time Faculty (FTE)	135
Teaching Assistants	203
Teaching Fellows	116
Professional, Administrative and Support Staff (Fall, 1986)	
Total Administrative/Professional Staff	585
Total Secretarial, Clerical & Technical	543
Total Buildings & Grounds, Plant Services	413
Degrees Conferred (1986)	
Undergraduate	2,273
Graduate & Professional	<u>1,030</u>
Total Degrees Conferred	3,303
Alumni (Fall, 1986)	88,834
Libraries — (Total Holdings) — Volumes (1986)	987,167
Physical Plant (Fall, 1986)	
Acres (owned properties):	
Chestnut Hill Campus	110.8
Newton Campus	40.2
Other	<u>9.7</u>
Total Acres	160.7
Buildings (utilized properties):	
Administrative/Academic	33
Student Housing	24
Other	<u>22</u>
Total Buildings	79
Finance (1985-1986)	
Revenues	\$163,800,000
Expenditures and Transfers	162,900,000

Administration & Faculty



Trustees of Boston College

December, 1972 through September, 1987

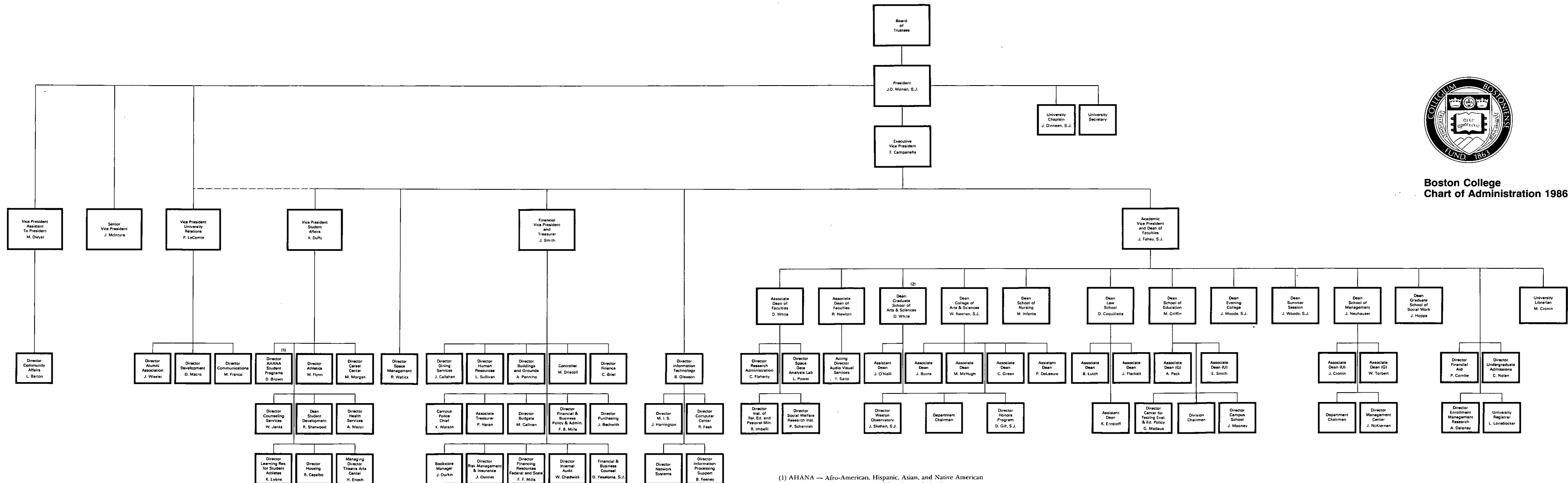
Joseph F. Abely, Jr.	1975-83, 1985-89	John Lowell	1972-79
Raymond C. Baumhart, S.J.	1972-73	Joseph F. MacDonnell, S.J.	1973-81
Raymond P. Bertrand, S.J.	1985-89	Francis C. Mackin, S.J.	1972-78, 1980-88
Geoffrey T. Boisi	1981-89	Joseph E. McCormick, S.J.	1977-85
Milton C. Borenstein	1979-87	John G. McElwee	1978-86
Joseph G. Brennan	1972-73	Leo J. McGovern, S.J.	1974-77
William L. Brown	1973-81, 1983-87	James T. McGuire	1982-90
Wayne A. Budd	1980-88	John J. McMullen	1978-86
Robert F. Byrnes	1972-73	John A. McNeice, Jr.	1986-90
Raymond J. Callahan, S.J.	1983-87	William W. Meissner, S.J.	1979-87
Donald R. Champion, S.J.	1980-88	Robert A. Mitchell, S.J.	1972-80, 1982-90
Denis H. Carroll	1985-89	J. Donald Monan, S.J.	1972-
Wallace E. Carroll	1972-74	Thomas M. Moran	1980-88
John M. Cataldo	1978-86	Diane J. Morash	1977-81
James F. Cleary	1972-80, 1982-90	Robert J. Morrissey	1980-88
William F. Connell	1974-86	Giles E. Mosher, Jr.	1972-78
John M. Connors, Jr.	1979-87	Emma Jeanne Mudd	1981-89
Joseph F. Cotter	1972-79	Michael E. Murphy	1980-88
James E. Coughlin, S.J.	1972-75	David S. Nelson	1972-78, 1979-87
John F. Cunningham	1982-90	Walter J. Neppi	1981-85
Mary Lou DeLong	1984-88	Francis Nicholson, S.J.	1972-76
George L. Drury, S.J.	1977-85	Edward M. O'Flaherty, S.J.	1986-90
Francis Dubreuil	1972-73	William J. O'Halloran, S.J.	1972-78
Joseph P. Duffy, S.J.	1982-90	Joseph A. O'Hare, S.J.	1973-81
Christopher Duncan*	1972-73	Robert J. O'Keefe	1974-82
Joseph R. Fahey, S.J.	1972-79, 1981-82	Adrian O'Keefe*	1972-73
John T. Fallon	1972-78	Thomas D. O'Malley	1985-89
Yen-Tsai Feng	1985-89	James P. O'Neill	1973-85
Joseph A. Fitzmyer, S.J.	1972-73	Thomas P. O'Neill, Jr.	1972-88
Stephen E. Fix	1976-80	Cornelius W. Owens	1972-80
Thomas J. Flanagan	1979-87	John W. Padberg, S.J.	1975-83
Thomas J. Flatley	1978-90	John P. Reboli, S.J.	1972-75
Maureen Foley	1973-77	E. Paul Robsham	1985-89
Jean Ford, R.S.C.J.	1974-77	Walter T. Rossi	1986-90
Thomas J. Galligan, Jr.	1972-80	Clare A. Schoenfeld	1980-84
Samuel J. Gerson	1986-90	Joseph L. Shea, S.J.	1972-77
Thomas J. Gibbons, S.J.	1975-83	Daniel J. Shine, S.J.	1976-82
Avram J. Goldberg	1972-78	Marianne D. Short	1985-89
Eli Goldston*	1972-74	Helen M. Stanton	1977-85
Patricia A. Goler	1972-80	Robert J. Starratt, S.J.	1978-86
Roberta L. Hazard	1984-88	Robert L. Sullivan	1983-87
John J. Higgins, S.J.	1983-87	Sandra J. Thomson	1977-85
George W. Hunt, S.J.	1985-89	Joseph F. Turley	1981-89
Anne P. Jones	1977-85	Thomas A. Vanderslice	1978-90
William J. Kenealy, S.J.*	1972-74	Michael P. Walsh, S.J.*	1972-80
Edward M. Kennedy	1976-87	An Wang	1978-82
Mary M. Lai	1972-79	Thomas J. Watson, III	1973-76
T. Vincent Learson	1974-76	Thomas J. White	1972-76
S. Joseph Loscocco*	1972-77	Blenda J. Wilson	1983-87
		Vincent C. Ziegler*	1972-78

*Deceased

Source: President's Office



**Boston College
Chart of Administration 1986**



(1) AHANA — Afro-American, Hispanic, Asian, and Native American
(2) Includes Graduate Programs in Education and Nursing
Source: Office of Human Resources

Board of Trustee Membership† 1986–1987

- *Joseph F. Abely, Jr., '50**
Chairman and Chief Executive Officer
Sea-Land Corporation
- Raymond P. Bertrand, S.J., '51, M.A. '55**
Director
Campion Renewal Center
- *Geoffrey T. Boisi, '69**
General Partner
Goldman Sachs & Company
- Milton C. Borenstein, Esq., '35**
Partner
Concorde Associates
- William L. Brown**
Chairman of the Board
First National Bank of Boston
- Wayne A. Budd, Esq., '63**
President
Budd, Wiley & Richlin, P.C.
- Raymond J. Callahan, S.J., M.A. '64 B.D. '69**
President
Boston College High School
- Donald R. Campion, S.J.**
Spiritual Director
Fordham University
- Denis H. Carroll, '64**
President
American Couplings Company
- James F. Cleary, '50**
Managing Director
Paine Webber, Inc.
- *John M. Connors, Jr., '63**
President
Hill, Holliday, Connors, Cosmopolos, Inc.
- John F. Cunningham, '64**
Chairman of the Board and Chief Executive Officer
Computer Consoles, Inc.
- Mary Lou DeLong, '71 (Newton College)**
Director of Planned Giving
Phillips Academy
- Joseph P. Duffy, S.J., '50, M.A. '51**
Rector of the Jesuit Community
Boston College
- Yen-Tsai Feng**
Roy E. Larsen Librarian
Harvard College Library
- Thomas J. Flanagan, '42**
Vice President
Arthur D. Little Program Systems
Management Company
- Thomas J. Flatley**
President
The Flatley Company
- Samuel J. Gerson, '63**
Chairman and Chief Executive Officer
Filene's Basement Stores
- Roberta L. Hazard, USN, '56, M.Ed. '57**
Commander
Naval Training Center
- John J. Higgins, S.J., '59, M.A. '60, S.T.L. '67**
Executive Assistant to the President
Fairfield University
- George W. Hunt, S.J.**
Editor-in-Chief
America Magazine
- Hon. Edward M. Kennedy, LL.D. '66 (Hon.)**
United States Senator
- *Francis C. Mackin, S.J., M.A. '53**
Pastor
Church of Saint Ignatius of Loyola
- James T. McGuire '39**
Vice Chairman
Canteen Corporation
- John A. McNeice, Jr. '54**
Chairman and Chief Executive Officer
The Colonial Group, Inc.
- William W. Meissner, S.J.**
Professor of Clinical Psychiatry
Harvard Medical School
- Robert A. Mitchell, S.J.**
President
University of Detroit
- *J. Donald Monan, S.J.**
President
Boston College
- Thomas M. Moran, '48**
President
T.M. Moran Company, Inc.
- Robert J. Morrissey, Esq., '60**
Partner
Withington, Cross, Park & Groden
- Emma Jeanne Mudd**
Boston College Parent

Michael E. Murphy, '58
Executive Vice President and Chief Financial and
Administrative Officer
Sara Lee Corporation

***Hon. David S. Nelson, '57, J.D. '60, LL.D. '79 (Hon.)**
United States District Judge

Edward M. O'Flaherty, S.J. '59, Th.M. '66
President
Weston School of Theology

Thomas D. O'Malley
Chairman
Phibro Energy, Inc.

Hon. Thomas P. O'Neill, Jr., '36, LL.D. '73 (Hon.)
Speaker of the House of Representatives

E. Paul Robsham, M.Ed. '83
President
Robsham Industries, Inc.

Walter T. Rossi, '64
President and Chief Operating Officer
Mervyn's

Marianne D. Short, '72 (Newton College), J.D. '76
Partner
Dorsey & Whitney

***Robert L. Sullivan, '50, M.A. '52**
International Practice Director,
Management Consulting (Retired)
Peat, Marwick, Mitchell & Company

Joseph F. Turley
President and Chief Operating Officer
The Gillette Company

***Thomas A. Vanderslice, '53**
Chairman of the Board
Apollo Computer, Inc.

Blenda J. Wilson, Ph.D. '79
Executive Director
Colorado Commission on Higher Education

†Only Boston College degrees listed.

*Executive Committee Member
Source: President's Office

Board of Trustee Chairmen

Cornelius W. Owens	1972-1975
Thomas J. Galligan, Jr.	1975-1978
James P. O'Neill	1978-1981
William F. Connell	1981-1984
David S. Nelson	1984-1987

Trustee Associate Membership† 1986-1987

John M. Cataldo, '44
President
National Freight Traffic Service

William F. Connell '59
Chairman and Chief Executive Officer
Avondale Industries, Inc.

Joseph F. Cotter, '49
Executive Vice President
The Sheraton Corporation

George L. Drury, S.J., '45, M.A. '46, M.S. '49, M.S. '58
Campion Renewal Center

John T. Fallon
Chairman of the Board and Chief Executive Officer
R.M. Bradley, Inc.

Thomas J. Galligan, Jr., '41, D.B.A. '75 (Hon.)
Chairman
Boston Edison Company

Thomas J. Gibbons, S.J., '53, M.A. '54, S.T.L. '61
Assistant to the Provincial for
Secondary Education

Avram J. Goldberg
Chairman of the Board and Chief Executive Officer
The Stop & Shop Companies, Inc.

Patricia A. Goler, M.A. '51, Ph.D. '57
Dean of the College of Liberal Arts
University of Lowell

Anne P. Jones, '58, J.D. '61
Partner
Sutherland, Asbill and Brennan

Mary M. Lai
Treasurer
Long Island University

John Lowell
Welch & Forbes

Joseph F. MacDonnell, S.J., '52, M.A. '59, S.T.B. '62
Professor of Mathematics
Fairfield University

Joseph E. McCormick, S.J., M.A. '46
Director for Vocations
Society of Jesus of New England

John G. McElwee, J.D., '50
Chairman and Chief Executive Officer
John Hancock Mutual Life Insurance Company

John J. McMullen
Chairman
John J. McMullen Associates, Inc.

Giles E. Mosher, Jr., '55
Chairman of the Board and President
Baybank Middlesex

Walter J. Neppi
Vice Chairman of the Board (Retired)
J. C. Penney Company, Inc.

Joseph A. O'Hare, S.J.
President
Fordham University

Robert J. O'Keefe, '51
Senior Vice President
American Security Bank N.A.

James P. O'Neill, '42
Partner
Regional Financial Enterprises

Cornelius W. Owens, '36, LL.D. '68 (Hon.)
Executive Vice President (Retired)
American Telephone & Telegraph Company

Clare A. Schoenfeld, '72
Chief of the Information Support Unit
United Nations Development Programme

Helen M. Stanton, M.S.W. '43
Boston College Alumna

Robert J. Starratt, S.J., '59, M.A. '60
Director
Center for Non-Public Education

Sandra J. Thomson, '58 (Newton College)
Department of Orthopaedic Surgery
The Children's Hospital Medical Center

Officers of the University Fall 1986

President
J. Donald Monan, S.J.

Executive Vice President
Frank B. Campanella

Vice President of Student Affairs
Kevin P. Duffy

Vice President, Assistant to the President
Margaret A. Dwyer

Academic Vice President and Dean of Faculties
Joseph R. Fahey, S.J.

Vice President for University Relations
Paul H. LeComte

Secretary of the University
Leo J. McGovern, S.J.

Senior Vice President
James P. McIntyre

Financial Vice President and Treasurer
John R. Smith

†Only Boston College degrees listed.
Source: President's Office

Academic Deans
Fall 1986

Faculties

Robert R. Newton, Associate Dean
Donald J. White, Associate Dean

The College of Arts and Sciences

William B. Neenan, S.J., Dean
Joseph J. Burns, Associate Dean
Carol Hurd Green, Associate Dean
Marie M. McHugh, Associate Dean
Patricia De Leeuw, Assistant Dean

The Evening College of Arts, Sciences and Business Administration

James A. Woods, S.J., Dean

The Graduate School of Arts and Sciences

Donald J. White, Dean
James M. O'Neill, Assistant Dean

The School of Education

Mary D. Griffin, Dean
Alec Peck, Associate Dean
Edward B. Smith, Associate Dean

The Law School

Daniel R. Coquillette, Dean
John M. Flackett, Associate Dean
Brian P. Lutch, Associate Dean
Kenneth H. Ernstoff, Assistant Dean

The School of Management

John J. Neuhauser, Dean
Justin C. Cronin, Associate Dean
William R. Torbert, Associate Dean

The School of Nursing

Mary Sue Infante, Dean

The Graduate School of Social Work

June G. Hopps, Dean

The Summer Session

James A. Woods, S.J., Dean

Source: Office of Human Resources

Note: Administrative positions listed are limited to those reflected on the Chart of Administration.

Department Chairmen and Chairwomen

Fall 1986

Accounting	Louis S. Corsini
Administrative Sciences	Walter H. Klein
Biology	R. Douglas Powers
Chemistry	Jeong-Long Lin
Classical Studies	Eugene W. Bushala
Computer Sciences	Harvey M. Deitel
Economics	Harold A. Petersen
English	E. Dennis Taylor
Finance	Jerry A. Viscione
Fine Arts	Kenneth M. Craig
Geology and Geophysics	John C. Hepburn
Germanic Studies	Christoph Eykman
History	Paul G. Spagnoli
Law	Alfred E. Sutherland
Marketing	Richard P. Nielsen
Mathematics	Robert J. Bond
Music	Olga Stone
Organizational Studies	Judith R. Gordon
Philosophy	Joseph F.X. Flanagan, S.J.
Physics	Rein A. Uritam
Political Science	David Manwaring
Psychology	Randolph Easton
Romance Languages and Literatures	Betty T. Rahv
Slavic and Eastern Languages	Lawrence G. Jones
Sociology	John B. Williamson
Speech Communication and Theater	Dorman Picklesimer, Jr.
Theology	Robert J. Daly, S.J.

Source: Office of the Academic Vice President

University Administrators

Fall 1986

Undergraduate Admissions
Charles S. Nolan, Director

AHANA, Student Programs
Donald Brown, Director

Alumni Association
John F. Wissler, Executive Director

Athletics
William J. Flynn, Director

University Audio-Visual Services
Yoshio Saito, Director

Bookstore
John G. Durkin, Manager

University Budgets
Michael T. Callnan, Director

Buildings and Grounds
Alfred G. Pennino, Director

Campus Police
Kenneth L. Watson, Chief

Campus School
Jean F. Mooney, Director

Career Center
Marilyn S. Morgan, Director

University Chaplain
John A. Dinneen, S.J.

Communications
Michael R. Franco, Director

Computer Center
Rodney J. Feak, Director

Controller
Michael J. Driscoll

University Counseling Services
Weston M. Jenks, Jr., Director

Community Affairs
Laurence Barton, Director

Development
Dennis C. Macro, Director

Dining Services
John M. Callahan, Director

Enrollment Management Research
Anne Marie Delaney, Director

Finance
Catherine H. Briel, Director

Financial Aid
Paul C. Combe, Director

Financial and Business Counsel
Dennis J. Yesalonia, S.J.

Financial and Business Policy and Administration
Fred B. Mills, Director

Financing Resources, Federal and State
Francis F. Mills, Director

Health Services
Arnold F. Mazur, M.D., Director

Honors Program, College of Arts & Sciences
David H. Gill, S.J., Director

Housing
Robert F. Capalbo, Director

Human Resources
Leo V. Sullivan, Director

Information Technology
Bernard W. Gleason, Jr., Director

Internal Audit
William E. Chadwick, Director

Learning Resources for Student Athletes
Kevin M. Lyons, Director

University Librarian
Mary J. Cronin

Management Center
John McKiernan, Director

Purchasing
John D. Beckwith, Director

University Registrar
Louise M. Lonabocker

Religious Education and Pastoral Ministry
Robert P. Imbelli, Director

Research Administration
Charles F. Flaherty, Director

Risk Management and Insurance
John Dunnet, Director

Social Welfare Research Institute
Paul G. Schervish, Director

Space Data Analysis Laboratory
Leo F. Power, Jr., Director

Space Management
Roderick G. Wallick, Director

Dean for Student Development
Robert A. Sherwood

Center for Testing Evaluation and Educational Policy
George F. Madaus, Director

Theater Arts Center
Howard Enoch, Managing Director

Associate Treasurer
Paul P. Haran

Weston Observatory
James W. Skehan, S.J., Director

Source: Office of Human Resources

Professional, Administrative and Support Staff Personnel As of Fall, 1986

	Full-Time Positions				Part-Time Positions				Total Positions
	Male	Female	Open	Total	Male	Female	Open	Total	
Professional, Administrative									
President's, Executive Vice									
President's Offices*	38	21	12	71	3	3	—	6	25
Dean of Faculties**	52	91	10	153	11	6	4	21	174
Finance and Business	66	38	8	112	1	1	—	2	114
Student Affairs	54	38	3	95	24	29	20	73	168
University Relations	21	24	2	47	1	3	1	5	52
Total	231	212	35	478	40	42	25	107	585
Secretarial, Clerical, Technical									
Secretarial, Clerical	17	312	26	355	1	44	9	54	409
Library Assistants	21	42	2	65	2	9	—	11	76
Technical, other	17	5	3	25	23	7	3	33	58
Total	55	359	31	445	26	60	12	98	543
Buildings & Grounds, Plant Services									
Housekeeping	93	20	13	126	—	—	—	—	126
Grounds & Trades	79	2	2	83	—	—	—	—	83
Gate Attendants, Campus Police	39	3	3	45	13	—	1	14	59
Mailroom, Switchboard	10	7	—	17	2	5	2	9	26
Dining	66	31	11	108	5	6	—	11	119
Total	287	63	29	379	20	11	3	34	413
Total Positions	573	634	95	1,302	86	113	40	239	1,541

*Includes Chaplain's Office. Also includes Information Technology positions previously included in Finance and Business.

**Includes Libraries

Note: The above figures represent all positions funded by the University as of September 1, 1986. Sponsored research positions are not included. Positions funded partially by the University and partially by outside contracts or grants are counted above as part-time University positions.

Source: Office of Human Resources

Faculty by School and Rank 1985-1986

School	Professor		Associate		Assistant		Instructor		Total	
	No.	%	No.	%	No.	%	No.	%	No.	%
Arts & Sciences	99	30	153	46	67	20	13	4	332	100
Education	18	40	17	38	9	20	1	2	45	100
Management	9	11	27	36	27	36	13	17	76	100
Nursing	4	7	21	37	11	20	20	36	56	100
Law	18	46	9	23	7	18	5	13	39	100
Social Work	4	22	9	50	4	22	1	6	18	100
Total	152	27	236	42	125	22	53	9	566	100

Source: Office of the Academic Vice President

Full-Time Equivalent Faculty by School* 1985-1986

School	Full-Time		FTE of Part-Time		Total FTE Faculty	
	No.	%	No.	%	No.	%
Arts & Sciences	332	59	84.73	63	416.73	60
Education	45	8	12.89	9	57.89	8
Management	76	13	8.00	6	84.00	12
Nursing	56	10	6.50	5	62.50	9
Law	39	7	6.33	5	45.33	6
Social Work	18	3	16.83	12	34.83	5
Total	566	100	135.28	100	701.28	100

*Method of computation: three courses equals one full-time faculty member.

Source: Office of the Academic Vice President

NOTE: Figures representing full-time faculty do not include the following: full-time academic administrators or directors, teaching fellows, special contracts; part-time academic administrators or staff.
Graduate faculty of the Departments of Education and Nursing of the Graduate School of Arts and Sciences are included in tables with their respective schools.

Faculty by School and Tenure Status 1985-1986

School	Tenured Faculty		Non-Tenured Faculty		Total	
	No.	%	No.	%	No.	%
Arts & Sciences	259	78	73	22	332	100
Education	36	80	9	20	45	100
Management	33	43	43	57	76	100
Nursing	22	39	34	61	56	100
Law	25	64	14	36	39	100
Social Work	11	61	7	39	18	100
Total	386	68	180	32	566	100

Source: Office of the Academic Vice President

Faculty by School and Sex 1985-1986

School	Women		Men		Total No.	%	
	No.	%	No.	%		Women	Men
Arts & Sciences	68	40	264	66	332	20	80
Education	13	8	32	8	45	29	71
Management	10	6	66	17	76	13	87
Nursing	55	33	1	-	56	98	2
Law	12	7	27	7	39	31	69
Social Work	10	6	8	2	18	56	44
Total	168	100	398	100	566	30	70

Source: Office of the Academic Vice President

Faculty by Highest Earned Degree and Rank 1985-1986

Degree	Professor		Associate		Assistant		Instructor		Total	
	No.	%	No.	%	No.	%	No.	%	No.	%
Doctorate	148	26	217	39	100	17	6	1	471	83
Masters	-	-	18	3	16	3	44	8	78	14
First Professional*	4	1	1	-	9	2	3	-	17	3
Total	152	27	236	42	125	22	53	9	566	100

*Including LLB, STB, PhL, and STL.

Source: Office of the Academic Vice President

Faculty by Highest Earned Degree and Sex 1985-1986

Degree	Women		Men		Total	
	No.	%	No.	%	No.	%
Doctorate	113	67	358	90	471	83
Masters	53	32	25	6	78	14
First Professional*	2	1	15	4	17	3
Total	168	100	398	100	566	100

*Including LLB, STB, PhL, and STL.

Source: Office of the Academic Vice President

Faculty by Rank and Sex 1985-1986

Rank	Women		Men		Total	
	No.	%	No.	%	No.	%
Professor	23	14	129	32	152	27
Associate	66	39	170	43	236	42
Assistant	42	25	83	21	125	22
Instructor	37	22	16	4	53	9
Total	168	100	398	100	566	100

Source: Office of the Academic Vice President

Full-Time Faculty, Teaching Assistants, Teaching Fellows By School and Departments

	Full-Time Faculty	Teaching Assistants	Teaching Fellows
Arts & Sciences			
Biology	18	38	--
Chemistry	18	29	--
Classics	4	--	--
Economics	22	2	20
English	35	--	22
Fine Arts*	11	--	--
Geology	9	16	--
German*	4	--	--
History	34	15	--
Mathematics	21	--	12
Music*	2	--	--
Philosophy	24	--	24
Physics	10	16	--
Political Science	18	12	--
Psychology	20	6	--
Romance Languages	14	--	21
Slavic/Eastern	3	1	--
Sociology	19	19	2
Speech*	11	--	--
Theology	35	4	9
Arts & Sciences Total	332	158	110
Education	45	45	6
Law	39	--	--
Management	76	--	--
Nursing	56	--	--
Religious Education	--	--	--
Social work	18	--	--
Total	566	203	116

*No graduate program.

Sources: Office of the Academic Vice President; Dean of Graduate School of Arts and Sciences.

Average Compensation by Rank*
 AAUP Category I (9-Month Equivalent)
 1985-1986

Rank	Boston College	All Combined Category	Church-Related
Professor	\$61,990	\$57,240	\$59,030
Associate	46,120	41,620	43,560
Assistant	38,300	34,720	35,020
Instructor	32,380	25,740	28,060

*Includes salary and fringe benefits.

Sources: Office of the Academic Vice President; Academe, March-April 1986.

Boston College Faculty
 Average Compensation by Rank*

Year	Professor	Associate	Assistant	Instructor
1976-77	\$29,800	\$23,300	\$18,900	\$16,300
1977-78	31,500	24,500	19,700	16,500
1978-79	34,100	26,000	20,700	15,900
1979-80	37,000	27,800	22,000	18,000
1980-81	40,700	30,500	24,500	19,400
1981-82	44,500	33,400	25,900	20,700
1982-83	50,900	37,900	30,100	23,600
1983-84	52,600	39,700	32,100	27,000
1984-85	57,000	43,000	37,380	29,380
1985-86	61,990	46,120	38,300	32,380

*Includes salary and fringe benefits.

Source: Office of the Academic Vice President

Students



Full-Time Freshmen Enrollment By Year and Sex

Fall	Men	Women	Total
1977	1,028	1,177	2,205
1978	901	1,176	2,077
1979	856	1,186	2,042
1980	927	1,244	2,171
1981	796	1,148	1,944
1982	946	1,242	2,188
1983	981	1,357	2,338
1984	1,030	1,276	2,306
1985	984	1,393	2,377
1986	997	1,198	2,195

Source: Office of Undergraduate Admissions

Freshmen Enrollees SAT Averages by Class

Class	Verbal	Mathematical	Total
1981	496	538	1,034
1982	509	544	1,053
1983	516	552	1,068
1984	512	555	1,067
1985	507	555	1,062
1986	506	549	1,055
1987	509	557	1,066
1988	519	567	1,086
1989	526	573	1,099
1990	527	577	1,104

Source: Office of Undergraduate Admissions

Freshmen Applications, Acceptances and Enrollment Full-Time

Fall	Applications	Acceptances	Acceptances % of Applications	Total Enrollment	Enrollment % of Acceptances	Enrollment % of Applications
1977	11,336	5,479	48	2,205	40	19
1978	12,411	4,821	39	2,077	43	17
1979	12,505	4,514	36	2,042	45	16
1980	12,640	4,389	35	2,171	49	17
1981	12,748	4,227	33	1,944	46	15
1982	12,110	5,233	43	2,188	42	18
1983	12,414	4,890	39	2,338	48	19
1984	14,398	5,100	35	2,306	45	16
1985	16,163	4,938	31	2,377	48	15
1986	14,986	4,960	33	2,195	44	15

Source: Office of Undergraduate Admissions

NOTE: Freshmen enrollments as reported herein are actual deposits received, on or before the deadline set by the Committee on Admissions, from students accepting the offer of admission extended by the University. Withdrawals may occur during the summer and the first two weeks in September.

Acceptance and enrollment figures reported are based on deposits received as of June 27, 1986.

Class of 1990
Applications, Acceptances and Enrollees
 Geographic Distribution

State	Applications	Acceptances	Enrollees	State	Applications	Acceptances	Enrollees
Alabama	17	3	0	Nevada	10	5	1
Alaska	5	2	0	New Hampshire	255	63	27
Arizona	44	16	4	New Jersey	1,655	390	185
Arkansas	5	2	1	New Mexico	11	5	3
California	524	128	37	New York	2,464	646	288
Colorado	74	21	11	North Carolina	54	14	5
Connecticut	1,348	314	149	North Dakota	6	2	0
Delaware	45	21	6	Ohio	241	65	27
District of Columbia	44	16	5	Oklahoma	32	12	3
Florida	396	140	78	Oregon	24	5	1
Guam	3	1	1	Pennsylvania	653	189	80
Georgia	74	30	10	Puerto Rico	129	51	28
Hawaii	37	15	4	Rhode Island	389	113	63
Idaho	9	2	0	South Carolina	14	2	2
Illinois	394	101	56	South Dakota	4	1	0
Indiana	66	25	12	Tennessee	42	13	5
Iowa	23	9	3	Texas	165	56	24
Kansas	39	12	4	Utah	12	4	0
Kentucky	27	9	1	Vermont	115	32	17
Louisiana	62	20	9	Virgin Islands	4	2	0
Maine	210	65	24	Virginia	223	63	17
Maryland	362	106	44	Washington	55	16	6
Massachusetts	3,733	1,842	832	West Virginia	18	8	1
Michigan	186	37	15	Wisconsin	104	40	19
Minnesota	113	27	11	Wyoming	6	3	1
Mississippi	5	1	0	Foreign	<u>319</u>	<u>145</u>	<u>54</u>
Missouri	107	38	16				
Montana	7	3	1	Total	14,986	4,960	2,195
Nebraska	23	9	4				

Source: Office of Undergraduate Admissions

Undergraduate Transfer Student Applications, Acceptances and Enrollment Full-time

Fall*	Applications	Acceptances	Acceptances % of Applications	Total Enrollment	Enrollment % of Acceptances	Enrollment % of Applications
1982	1,617	660	41	375	57	23
1983	1,731	544	31	305	56	18
1984	1,953	491	25	306	62	16
1985	1,742	165	9	84	51	5
1986	1,557	436	28	252	58	16

Source: Office of Undergraduate Admissions

Undergraduate Transfer Student Enrollment By Type of Previous Institution and Sex

Fall*	2-Year Public	2-Year Private	4-Year Public	4-Year Private	Total	Men	Women	Total
1982	28	30	71	246	375	130	245	375
1983	15	21	55	214	305	97	208	305
1984	25	22	55	204	306	112	194	306
1985	4	12	20	48	84	20	64	84
1986	19	9	49	175	252	100	152	252

*Transfer enrollment typically increases 75-125 students second semester.

Source: Office of Undergraduate Admissions

Graduate and Undergraduate Enrollment Full- and Part-time

Year	Undergraduate			Graduate			Total
	F.T.*	P.T.	Total	F.T.	P.T.	Total	
1977-78	9,066	1,221	10,287	1,837	1,844	3,681	13,968
1978-79	8,846	1,339	10,185	1,911	1,817	3,728	13,913
1979-80	8,842	1,480	10,322	1,845	1,810	3,655	13,977
1980-81	9,090	1,677	10,767	1,919	1,759	3,678	14,445
1981-82	8,980	1,667	10,647	1,921	1,598	3,519	14,166
1982-83	8,877	1,652	10,529	1,878	1,662	3,540	14,069
1983-84	8,928	1,576	10,504	1,796	1,759	3,555	14,059
1984-85	8,923	1,660	10,583	1,748	1,879	3,627	14,210
1985-86	9,015	1,617	10,632	1,799	2,045	3,844	14,476
1986-87	8,771	1,460	10,231	1,664	2,098	3,762	13,993

*Includes full-time students in Evening College.

Source: Registrar

Undergraduate Day and Evening and Graduate Enrollment

Year	Undergraduate			Graduate/ Professional	Total
	Day	Evening	Total		
1977-78	8,705	1,582	10,287	3,681	13,968
1978-79	8,483	1,702	10,185	3,728	13,913
1979-80	8,474	1,848	10,322	3,655	13,977
1980-81	8,729	2,038	10,767	3,678	14,445
1981-82	8,589	2,058	10,647	3,519	14,166
1982-83	8,516	2,013	10,529	3,540	14,069
1983-84	8,628	1,876	10,504	3,555	14,059
1984-85	8,601	1,982	10,583	3,627	14,210
1985-86	8,691	1,941	10,632	3,844	14,476
1986-87	8,445	1,786	10,231	3,762	13,993

NOTE: All enrollment statistics are as of the sixth week of the first semester. Enrollment figures fluctuate throughout the year as a result of withdrawals, transfers, and mid-year graduations.

Source: Registrar

Undergraduate Enrollment By School

Year	A&S	SOM	Education	Nursing	Evening	Total
1977-78	5,013	2,010	926	756	1,582	10,287
1978-79	4,826	2,076	812	769	1,702	10,185
1979-80	4,839	2,159	753	723	1,848	10,322
1980-81	5,022	2,261	765	681	2,038	10,767
1981-82	5,024	2,191	728	646	2,058	10,647
1982-83	5,049	2,203	641	623	2,013	10,529
1983-84	5,172	2,240	628	588	1,876	10,504
1984-85	5,138	2,243	623	597	1,982	10,583
1985-86	5,281	2,198	671	541	1,941	10,632
1986-87	5,192	2,108	683	462	1,786	10,231

Source: Registrar

Graduate Enrollment By School

Year	A&S*	SOM	Social Work	Law	Total
1977-78	2,187	493	243	758	3,681
1978-79	2,157	503	271	797	3,728
1979-80	2,129	489	252	785	3,655
1980-81	2,124	496	280	778	3,678
1981-82	1,915	483	329	792	3,519
1982-83	1,848	484	363	845	3,540
1983-84	1,854	513	358	830	3,555
1984-85	1,882	552	362	831	3,627
1985-86	2,095	580	376	793	3,844
1986-87	2,037	587	359	779	3,762

*Includes Graduate Education and Nursing.

Source: Registrar

Graduate Enrollment*

By Degree Program and Discipline, Full- and Part-Time

	1981-82		1982-83		1983-84		1984-85		1985-86	
	Masters	Ph.D.	Masters	Ph.D.	Masters	Ph.D.	Masters	Ph.D.	Masters	Ph.D.
American Studies	10	1	9	1	8	1	20	1	18	-
A&S Unspecified	21	2	2	2	1	1	2	-	-	-
Biology	40	16	34	13	37	16	41	16	40	21
Chemistry	19	24	22	30	30	35	26	33	69	35
Economics	10	59	8	63	6	64	2	71	4	69
Education	642	439	612	444	618	443	677	447	651	476
English	63	24	49	23	52	23	70	26	92	21
Geology	12	-	11	-	14	-	11	-	9	-
Geology-Geophysics	29	-	39	-	56	-	54	-	51	-
Geophysics	5	-	5	-	2	-	1	-	2	-
History	29	30	28	29	35	27	32	30	39	38
Interdisciplinary	7	9	5	9	3	8	-	10	-	5
Latin & Greek	4	-	3	-	3	-	-	-	4	-
Law	796	-	865	-	847	-	853	-	809	-
Linguistics	-	-	-	-	-	-	-	-	1	-
Management	583	-	599	-	613	-	664	-	698	-
Mathematics	10	-	12	-	16	-	12	-	15	-
Nursing	124	-	90	-	83	-	100	-	121	-
Philosophy	35	50	32	48	37	51	38	56	37	56
Physics	5	23	6	21	6	25	5	25	2	30
Political Science	24	30	32	31	48	32	47	32	47	33
Psychology	3	34	3	26	2	19	1	13	5	13
Romance Languages	-	-	-	-	-	-	-	-	33	16
Religious Education**	132	4	126	4	127	6	129	7	198	7
Russian	3	-	4	-	3	-	4	-	3	-
Slavic	3	-	2	-	3	-	2	-	1	-
Social Work	357	-	382	-	383	-	380	-	396	-
Sociology	38	54	29	51	27	58	25	65	25	63
Theology	31	41	28	37	35	32	32	34	37	39
Total	3,079	856	3,083	849	3,187	858	3,270	882	3,407	922

*Figures include students who attended for just one semester, as well as those who attended a full year.

**Previously included in "Italian," "French," and "Spanish."

Source: Registrar

Undergraduate and Graduate Enrollment By Sex

Year	Undergraduate		Graduate Professional		Total		Total Enrollment
	Men	Women	Men	Women	Men	Women	
1977-78	4,850	5,437	1,802	1,879	6,652	7,316	13,968
1978-79	4,625	5,560	1,783	1,945	6,408	7,505	13,913
1979-80	4,556	5,766	1,701	1,954	6,257	7,720	13,977
1980-81	4,603	6,164	1,642	2,036	6,245	8,200	14,445
1981-82	4,471	6,176	1,542	1,977	6,013	8,153	14,166
1982-83	4,397	6,132	1,540	2,000	5,937	8,132	14,069
1983-84	4,418	6,086	1,577	1,978	5,995	8,064	14,059
1984-85	4,515	6,068	1,559	2,068	6,074	8,136	14,210
1985-86	4,477	6,155	1,650	2,194	6,127	8,349	14,476
1986-87	4,316	5,915	1,562	2,200	5,878	8,115	13,993

Source: Registrar

Full-Time Equivalent Enrollment*

Year	Undergraduate			Graduate/ Professional	Total
	Day	Evening	Total		
1977-78	8,705	768	9,473	2,440	11,913
1978-79	8,483	809	9,292	2,516	11,808
1979-80	8,474	861	9,335	2,448	11,783
1980-81	8,729	920	9,649	2,505	12,154
1981-82	8,589	947	9,536	2,454	11,990
1982-83	8,500	928	9,428	2,432	11,860
1983-84	8,616	837	9,453	2,382	11,835
1984-85	8,579	897	9,476	2,374	11,850
1985-86	8,674	880	9,554	2,481	12,035
1986-87	8,429	829	9,258	2,363	11,621

*Method of computation: three part-time students equal one full-time equivalent student.
Source: Registrar

Summer Session Enrollment

Summer	Undergraduate	Graduate/ Professional*	Total
1977	898	1,714	2,612
1978	924	1,679	2,603
1979	1,068	1,590	2,658
1980	1,122	1,700	2,822
1981	1,136	1,759	2,895
1982	1,349	1,784	3,133
1983	1,948	1,473	3,421
1984	1,840	1,589	3,429
1985	1,978	1,899	3,877
1986	1,980	1,699	3,679

*Includes students registered through the Institute of Religious Education, and the Graduate School of Management.

Source: Summer Session Office

Evening College Enrollment

Year	Full-time		Part-Time		Total		Total
	Men	Women	Men	Women	Men	Women	
Fall 1980-81	200	161	587	1,090	787	1,251	2,038
Spring 1980-81	154	142	494	788	648	930	1,578
Fall 1981-82	189	202	616	1,051	805	1,253	2,058
Spring 1981-82	153	164	480	843	633	1,007	1,640
Fall 1982-83	174	211	598	1,030	772	1,241	2,013
Spring 1982-83	118	184	537	839	655	1,023	1,678
Fall 1983-84	161	157	578	980	739	1,137	1,876
Spring 1983-84	155	147	550	804	705	951	1,656
Fall 1984-85	201	154	649	978	850	1,132	1,982
Spring 1984-85	169	160	535	835	704	995	1,699
Fall 1985-86	174	175	628	964	802	1,139	1,941
Spring 1985-86	154	152	492	776	646	928	1,574
Fall 1986-87	157	193	541	895	698	1,088	1,786

Source: Registrar

Geographic Distribution of Students*

Fall 1986

	Undergraduate	Evening	Graduate A&S	Social Work	Graduate SOM	Law School	Total
Alabama	3	-	-	-	-	1	4
Alaska	-	-	-	-	-	-	-
Arizona	11	-	1	-	1	-	13
Arkansas	1	-	-	-	-	-	1
California	110	2	15	4	4	13	148
Colorado	25	2	3	-	-	2	32
Connecticut	677	11	24	6	1	29	748
D.C.	21	-	2	-	1	4	28
Delaware	20	1	3	-	-	-	24
Florida	171	1	11	-	1	13	197
Georgia	27	1	3	-	-	4	35
Hawaii	15	1	3	-	-	3	22
Idaho	1	-	1	-	-	1	3
Illinois	177	1	3	-	2	12	195
Indiana	17	-	3	-	-	1	21
Iowa	7	-	2	-	-	1	10
Kansas	14	-	2	-	1	-	17
Kentucky	6	-	2	-	-	1	9
Louisiana	14	1	3	-	1	-	19
Maine	126	3	15	34	1	8	187
Maryland	138	1	8	1	1	10	159
Massachusetts	3721**	1690	1569	285	497	450	8212
Michigan	62	3	10	-	3	1	79
Minnesota	46	-	2	-	-	-	48
Mississippi	-	1	-	-	-	-	1
Missouri	45	-	4	-	2	1	52
Montana	5	-	-	-	-	-	5
Nebraska	15	-	2	-	-	1	18
Nevada	3	-	-	-	-	1	4
New Hampshire	135	12	71	10	12	14	254
New Jersey	643	12	23	2	8	39	727
New Mexico	3	-	-	-	-	3	6
New York	1002	23	52	8	11	87	1183
North Carolina	15	-	1	-	1	1	18
North Dakota	-	-	-	-	-	-	-
Ohio	132	2	10	1	2	8	155
Oklahoma	4	-	1	-	-	1	6
Oregon	5	-	-	-	-	-	5
Pennsylvania	286	3	19	-	1	19	328
Puerto Rico	76	2	4	-	2	6	90
Rhode Island	272	9	46	6	4	23	360
South Carolina	5	-	-	-	-	-	5
South Dakota	1	-	-	-	-	1	2
Tennessee	13	1	-	-	-	2	16
Texas	48	-	10	-	-	1	59
Utah	2	-	-	-	1	-	3
Vermont	43	-	6	-	3	4	56
Virginia	60	1	6	1	2	5	75
Virgin Islands	2	-	-	-	-	-	2
Washington	20	-	3	-	1	-	24
West Virginia	3	-	1	-	-	-	4
Wisconsin	42	-	4	-	1	-	47
Wyoming	1	-	-	-	-	-	1
Foreign	156	2	89	1	22	8	278
Total	8447	1786	2037	359	587	779	13,993

*Figures are based on the state which the student lists as a permanent address, which may not necessarily reflect the true "home" state or country.

**Within Massachusetts, 1569 undergraduate students (approximately 42%) are from the Greater Boston Area surrounding the University (defined by a zip code beginning with 021).

Source: Registrar

International Student and Scholar Statistics
 By School, 1985-1986

College of Arts & Sciences	82
School of Management	75
School of Education	6
School of Nursing	1
Graduate School of Arts & Sciences	140
Graduate School of Social Work	1
Graduate School of Management	25
Law School	<u>6</u>
Sub-total	336
Practical Training (Field Work)	16
Faculty and Postdoctoral Research Scholars	<u>19</u>
Total	371

Source: Office of the Dean for Student Development

International Student and Scholar Statistics
 By Class or Program, 1985-1986

Freshmen	49
Sophomores	31
Juniors	33
Seniors	<u>51</u>
Total Undergraduate	164
Graduate/Professional:	
Masters	53
Ph.D	84
J.D.	6
Special Programs	<u>1</u>
Total Graduate/Professional	144
Practical Training	16
Faculty and Research Scholars	<u>19</u>
Total	343

Source: Office of the Dean for Student Development

International Student and Scholar Statistics
 By Sex and Program

Program	Men	Women	Total
Undergraduate	102	62	164
Graduate	86	86	172
Practical Training	9	7	16
Faculty and Research Scholars	<u>13</u>	<u>6</u>	<u>19</u>
Total	210	161	371

Source: Office of the Dean for Student Development

International Students by Country Undergraduate and Graduate, 1985-1986

Antigua	1	Korea	13
Argentina	2	Kuwait	1
Australia	18	Lebanon	4
Bahamas	2	Malaysia	1
Bahrain	1	Mexico	6
Bangladesh	2	Morocco	2
Bermuda	4	Netherlands	8
Bolivia	3	Nicaragua	4
Brazil	1	Nigeria	3
Canada	17	Panama	10
Chile	2	People's Republic of China	21
Colombia	10	Peru	3
Costa Rica	1	Philippines	12
Cyprus	2	Poland	1
Dominican Republic	2	Portugal	3
Ecuador	6	Sierre Leone	1
Egypt	5	South Africa	1
El Salvador	4	Spain	9
France	8	Sweden	1
West Germany	7	Switzerland	1
Greece	7	Taiwan	7
Guyana	1	Thailand	5
Haiti	1	Trinidad & Tobago	2
Hong Kong	8	Turkey	9
India	16	United Arab Emirates	1
Indonesia	2	United Kingdom	7
Iran	9	Venezuela	15
Ireland	10	Yugoslavia	1
Italy	13	Zaire	1
Jamaica	4	Zimbabwe	1
Japan	8	Total	336
Jordan	5		
		Countries Represented	62

Source: Office of the Dean for Student Development

Undergraduate and Graduate Minority Enrollment

	1983-84			1984-85			1985-86			1986-87		
	Men	Women	Total	Men	Women	Total	Men	Women	Total	Men	Women	Total
Undergraduate												
Black	75	115	190	91	107	198	96	123	219	103	132	235
American Indian	2	5	7	6	9	15	8	10	18	8	11	19
Oriental	111	180	291	111	193	304	125	205	330	135	242	377
Hispanic	140	203	343	145	211	356	145	226	371	149	235	384
Other	75	93	168	69	73	142	50	67	117	53	59	112
Total	403	596	999	422	593	1,015	424	631	1,055	448	679	1,127
Graduate												
Black	37	46	83	35	45	80	31	57	88	36	58	94
American Indian	3	5	8	2	4	6	4	7	11	1	5	6
Oriental	46	48	94	52	55	107	54	60	114	64	71	135
Hispanic	32	37	69	36	41	77	49	48	97	40	53	93
Other	37	44	81	37	46	83	44	39	83	42	33	75
Total	155	180	335	162	191	353	182	211	393	183	220	403
Total Graduate and Undergraduate	558	776	1,334	584	784	1,368	606	842	1,448	631	899	1,530

Source: Registrar

Veterans Enrolled at Boston College 1986-1987

School	Men	Women	Full-Time	Part-Time	Total
Arts and Sciences	5	0	5	0	5
Education	0	0	0	0	0
Evening College	8	1	2	7	9
Nursing	0	0	0	0	0
Management	2	0	2	0	2
Graduate School of A&S	5	2	2	5	7
Graduate SOM	2	1	0	3	3
Law School	8	2	10	0	10
Social Work	0	0	0	0	0
Total	30	6	21	15	36

Source: Registrar

Undergraduate Degrees Conferred*
 By Degree and Number of Majors

	1981-82	1982-83	1983-84	1984-85	1985-86
Arts and Sciences					
A.B.					
Single Major	792	816	912	782	921
Double Major	233	212	222	208	184
Triple Major	—	1	1	1	—
	1,025	1,029	1,135	991	1,105
B.S.					
Single Major	168	175	170	152	109
Double Major	37	32	37	19	15
Triple Major	—	—	—	—	—
	205	207	207	171	124
Total A&S	1,230	1,236	1,342	1,162	1,229
School of Education-A.B.					
Single Major	170	154	120	141	142
Double Major	29	17	16	10	11
Triple Major	—	—	—	—	—
	199	171	136	151	153
School of Management-B.S.					
Single Major	440	410	391	464	482
Double Major	107	130	135	123	109
Triple Major	2	1	1	—	—
	549	541	527	587	591
School of Nursing-B.S.					
	178	186	142	155	160
Subtotal-Undergraduate Degrees	2,156	2,134	2,147	2,055	2,133
Evening College					
A.B.	109	123	126	129	140
B.S.	—	—	—	—	—
	109	123	126	129	140
Total Undergraduate Degrees Conferred	2,265	2,257	2,273	2,184	2,273

*September-January-May
 Source: Registrar

Undergraduate Degrees Conferred By Major*

	1981-82	1982-83	1983-84	1984-85	1985-86
Accounting	162	178	179	132	108
American Studies	-	1	-	-	1
Art History	17	7	12	8	6
Biochemistry	-	-	-	1	8
Biology	149	154	161	123	86
Chemistry	36	31	26	29	16
Classics	2	2	3	1	1
Computer Science	73	96	111	161	87
Early Childhood Education	-	7	10	7	13
Early Childhood & Special Education	-	-	7	4	-
Early Childhood Special Needs	-	10	-	-	-
Economics	203	162	208	224	218
Elementary Education	59	35	26	31	42
English	186	205	212	162	202
Finance	109	97	115	108	170
French	15	16	18	15	12
General Management	17	23	21	-	-
Geology	4	13	11	11	4
Geophysics	4	3	2	3	-
German	3	2	3	1	2
History	89	54	87	77	77
Human Development	49	49	48	46	50
Independent	-	1	3	3	-
Italian	-	1	2	1	5
Linguistics	3	3	-	1	-
Management	-	-	-	16	15
Marketing	151	132	122	182	201
Mathematics	70	84	66	45	77
Middle School Education	-	-	-	-	2
Moderate Special Needs	-	-	-	-	22
Nursing	178	186	142	155	160
Operations Management	4	3	-	-	-
Organizational Studies/Human Resources Management	11	13	7	13	10
Philosophy	41	28	43	24	45
Physics	12	7	7	4	4
Political Science	124	165	151	133	140
Psychology	124	112	116	110	130
Quantative Analysis	-	-	-	-	5
Romance Languages	13	6	7	-	2
Russian	2	4	4	-	-
Secondary Education	10	5	13	15	3
Severe Special Needs	-	5	6	6	6
Slavic Studies	2	-	-	-	-
Sociology	63	48	39	27	26
Spanish	10	18	15	13	15
Special Education/Alternative Environments	7	11	3	-	1
Special Education/Elementary Education**	72	49	23	42	-
Speech Communication	63	95	91	106	136
Speech Theater	7	1	4	1	7
Studio Art	8	10	9	10	9
Theology	4	2	14	6	9
Total***	2,156	2,134	2,147	2,057	2,133

*Double and Triple majors counted by first major.

**Elementary Education majors with concentration in Special Education.

***Evening College majors are not included in this total.

Source: Registrar

Undergraduate Degrees Conferred By School and by Major

	1984						1985						1986					
	A.&S.		Ed.	SOM	Nurs.	Total	A.&S.		Ed.	SOM	Nurs.	Total	A.&S.		Ed.	SOM	Nurs.	Total
	A.B.	B.S.					A.B.	B.S.					A.B.	B.S.				
Accounting	-	-	-	179	-	179	-	-	-	132	-	132	-	-	-	108	-	108
American Studies	-	-	-	-	-	-	-	-	-	-	-	-	1	-	-	-	-	1
Art History	12	-	-	-	-	12	8	-	-	-	-	8	6	-	-	-	-	6
Biochemistry	-	-	-	-	-	-	-	1	-	-	-	1	-	8	-	-	-	8
Biology	-	161	-	-	-	161	-	123	-	-	-	123	-	86	-	-	-	86
Chemistry	-	26	-	-	-	26	-	29	-	-	-	29	-	16	-	-	-	16
Classics	3	-	-	-	-	3	1	-	-	-	-	1	1	-	-	-	-	1
Computer Science	34	-	-	77	-	111	34	-	-	127	-	161	34	-	-	53	-	87
Early Childhood Education	-	-	10	-	-	10	-	-	7	-	-	7	-	-	13	-	-	13
Early Childhood & Special Education	-	-	7	-	-	7	-	-	4	-	-	4	-	-	-	-	-	-
Economics	202	-	-	6	-	208	210	-	-	14	-	224	209	-	1	8	-	218
Elementary Education	-	-	26	-	-	26	-	-	31	-	-	31	-	-	42	-	-	42
English	212	-	-	-	-	212	162	-	-	-	-	162	195	-	6	1	-	202
Finance	-	-	-	115	-	115	-	-	-	108	-	108	-	-	-	170	-	170
French	18	-	-	-	-	18	15	-	-	-	-	15	11	-	-	1	-	12
General Management	-	-	-	21	-	21	-	-	-	-	-	-	-	-	-	-	-	-
Geology	-	11	-	-	-	11	-	11	-	-	-	11	-	4	-	-	-	4
Geophysics	-	2	-	-	-	2	-	3	-	-	-	3	-	-	-	-	-	-
German	3	-	-	-	-	3	1	-	-	-	-	1	2	-	-	-	-	2
History	87	-	-	-	-	87	77	-	-	-	-	77	75	-	1	1	-	77
Human Development	-	-	48	-	-	48	-	-	46	-	-	46	-	-	50	-	-	50
Independent	3	-	-	-	-	3	3	-	-	-	-	3	-	-	-	-	-	-
Italian	2	-	-	-	-	2	1	-	-	-	-	1	5	-	-	-	-	5
Linguistics	-	-	-	-	-	-	1	-	-	-	-	1	-	-	-	-	-	-
Management	-	-	-	-	-	-	-	-	-	16	-	16	-	-	-	15	-	15
Marketing	-	-	-	122	-	122	-	-	-	182	-	182	-	-	-	201	-	201
Mathematics	66	-	-	-	-	66	45	-	-	-	-	45	76	-	1	-	-	77
Middle School Education	-	-	-	-	-	-	-	-	-	-	-	-	-	-	2	-	-	2
Moderate Special Needs	-	-	-	-	-	-	-	-	-	-	-	-	-	-	22	-	-	22
Nursing	-	-	-	-	142	142	-	-	-	-	155	155	-	-	-	-	160	160
Operations Management	-	-	-	-	-	-	-	-	-	-	-	-	-	-	-	-	-	-
Organizational Studies/Human Resources Management	-	-	-	7	-	7	-	-	-	13	-	13	-	-	-	10	-	10
Philosophy	43	-	-	-	-	43	24	-	-	-	-	24	42	-	1	2	-	45
Physics	-	7	-	-	-	7	-	4	-	-	-	4	-	4	-	-	-	4
Political Science	151	-	-	-	-	151	133	-	-	-	-	133	140	-	-	-	-	140
Psychology	116	-	-	-	-	116	110	-	-	-	-	110	127	-	1	2	-	130
Quantitative Analysis	-	-	-	-	-	-	-	-	-	-	-	-	-	-	-	5	-	5
Romance Languages	7	-	-	-	-	7	1	-	-	-	-	1	-	-	-	2	-	2
Russian	4	-	-	-	-	4	-	-	-	-	-	-	-	-	-	-	-	-
Secondary Education	-	-	13	-	-	13	-	-	15	-	-	15	-	-	3	-	-	3
Severe Special Needs	-	-	6	-	-	6	-	-	6	-	-	6	-	-	6	-	-	6
Slavic Studies	-	-	-	-	-	-	-	-	-	-	-	-	-	-	-	-	-	-
Sociology	39	-	-	-	-	39	27	-	-	-	-	27	26	-	-	-	-	26
Spanish	15	-	-	-	-	15	13	-	-	-	-	13	12	-	2	1	-	15
Special Education/Alternative Environments	-	-	3	-	-	3	-	-	-	-	-	-	-	-	1	-	-	1
Special Education/Elementary Education	-	-	23	-	-	23	-	-	42	-	-	42	-	-	-	-	-	-
Speech Communication	91	-	-	-	-	91	106	-	-	-	-	106	132	-	4	-	-	136
Speech Theater	4	-	-	-	-	4	1	-	-	-	-	1	6	-	1	-	-	7
Studio Art	9	-	-	-	-	9	10	-	-	-	-	10	9	-	-	-	-	9
Theology	14	-	-	-	-	14	6	-	-	-	-	6	7	-	1	1	-	9
Total*	1,135	207	136	527	142	2,147	988	171	151	592	155	2,057	1,116	118	158	581	160	2,133

*Evening College majors are not included in this total.

Source: Registrar

Undergraduate and Graduate Degrees Conferred* By Degree and by Sex

	1982-83			1983-84			1984-85			1985-86		
	Men	Women	Total	Men	Women	Total	Men	Women	Total	Men	Women	Total
Undergraduate												
College of Arts & Sciences												
A.B.	443	586	1,029	505	630	1,135	423	568	991	493	612	1,105
B.S.	117	90	207	130	77	207	87	84	171	79	45	124
Total Arts & Sciences	560	676	1,236	635	707	1,342	510	652	1,162	572	657	1,229
School of Education-A.B.	6	165	171	17	119	136	14	137	151	10	143	153
School of Nursing-B.S.	3	183	186	4	138	142	5	150	155	3	157	160
School of Management-B.S.	281	260	541	268	259	527	308	281	589	329	262	591
Subtotal Undergraduate	850	1,284	2,134	924	1,223	2,147	837	1,220	2,057	1,014	1,219	2,133
Evening College A.B.	43	80	123	45	81	126	50	79	129	51	89	140
Total Undergraduate Degrees Conferred	893	1,364	2,257	969	1,304	2,273	887	1,299	2,186	965	1,308	2,273
Graduate												
Ph.D.	31	37	68	50	36	86	31	43	74	30	37	67
D.Ed.	9	5	14	3	4	7	5	-	5	5	5	10
M.A.	59	128	187	58	103	161	58	127	185	56	129	185
M.S.	18	87	105	15	83	98	22	63	85	13	68	81
M.Ed.	36	112	148	18	82	100	34	87	121	28	98	126
M.A.T.	2	2	4	1	4	5	3	4	7	5	6	11
M.S.T.	-	-	-	2	1	3	-	1	1	2	4	6
J.D.	153	105	258	132	129	261	164	137	301	143	100	243
M.B.A.	75	62	137	78	62	140	107	65	172	83	58	141
M.S.W.	22	121	143	19	110	129	22	80	102	26	111	137
D.S.W.	-	-	-	-	-	-	2	-	2	-	2	2
C.A.E.S.	8	17	25	4	10	14	6	14	20	11	9	20
C.A.G.S.	-	-	-	-	-	-	-	-	-	1	-	1
Total Graduate Degrees Conferred	413	676	1,089	380	624	1,004	454	621	1,075	403	627	1,030
Total Undergraduate and Graduate Degrees	1,306	2,040	3,346	1,349	1,928	3,277	1,341	1,920	3,261	1,368	1,935	3,303

*September-January-May
Source: Registrar

Undergraduate and Graduate Financial Aid, 1981-1986

Thousands of Dollars

	1981-82	1982-83	1983-84	1984-85	1985-86
Type of Aid — Undergraduate					
University Scholarships and Grants ¹	\$ 6,262	\$ 7,694	\$ 9,715	\$10,863	\$12,425
State Scholarships ²	1,287	1,331	1,812	2,368	2,530
Pell Grants ³	1,763	1,743	1,630	1,355	1,366
Supplemental Educational Opportunity Grants ⁴	999	836	1,073	1,251	1,209
Work-Study	1,713	1,936	1,832	1,781	2,048
National Direct Student Loans ⁵	2,337	2,509	2,504	2,397	2,417
Undergraduate Total⁶	\$14,361	\$16,049	\$18,566	\$20,015	\$21,994
Type of Aid — Graduate					
Work-Study	274	354	308	349	400
National Direct Student Loans ⁵	420	488	570	595	713
Total Undergraduate and Graduate	\$14,995	\$16,891	\$19,444	\$20,959	\$23,107

Number of Awards

	1981-82	1982-82	1983-84	1984-85	1985-86
Type of Aid — Undergraduate					
University Scholarships and Grants ¹	3,191	3,504	3,636	3,328	3,266
State Scholarships ²	1,746	1,751	1,714	1,912	1,845
Pell Grants ³	1,935	1,633	1,374	1,098	1,049
Supplemental Educational Opportunity Grants ⁴	1,320	1,647	1,513	1,221	1,044
Work-Study	1,295	1,415	1,449	1,603	1,628
National Direct Student Loans ⁵	2,753	2,770	2,191	2,190	2,250
Undergraduate Total⁶	12,240	12,720	11,877	11,352	11,082
Type of Aid — Graduate					
Work-Study	186	225	194	269	260
National Direct Student Loans ⁵	260	337	340	334	373
Total Undergraduate and Graduate	12,686	13,282	12,411	11,955	11,715

¹This statistic includes regular university scholarships and grants (through the operating budget), faculty kin tuition remission, minority scholarships, athletic grants, Jesuit Reduction, Alumni Association Scholarships, and endowed monies for scholarships.

²State scholarship funds to students from Massachusetts, Vermont, Connecticut, New Jersey, Pennsylvania, Rhode Island, Maryland, Maine, New Hampshire.

³Students who are enrolled at least half-time in an undergraduate degree program are eligible to apply for these grants. Formerly Basic Educational Opportunity Grants, Pell Grants are awarded to students with need, and eligibility is determined directly by the Federal Government.

⁴Available to students enrolled at least half-time in an undergraduate degree program. These grants are awarded to students with exceptional need and are termed "last resort."

⁵Available to undergraduates and graduates enrolled at least half-time. These loan funds are obtained by Federal Government contributions, Boston College contributions and collections of previous loans awarded. The loans have up to a 10-year repayment period with an interest rate of 5% per year on the unpaid balance.

⁶This is a duplicated total since some students receive more than one type of aid.

NOTE: In an effort to minimize statistical detail, the above data does not include Boston College graduate student assistance (approximately \$3,144,179 in 1985-86), administered by the various schools and departments. Also excluded are the Nursing and Loan Program (\$66,250 in 1985-86), a variety of government fellowships or scholarships from fraternal organizations and clubs (\$1,300,588 in 1985-86), and Higher Education Loans processed by the Financial Aid Office and disbursed by banks (\$14,955,116 in 1985-86), all of which are open to both undergraduate and graduate students. (In addition to these programs, the Student Employment Office placed 3,559 students in summer and term jobs both on and off campus, and the university processed parental loans totaling \$3,477,149 from banks and the Massachusetts Education Loan Authority.)

Health Services

Number of Students Served

	1981-82	1982-83	1983-84	1984-85	1985-86
Grand Totals					
Total Visits to M.D.	20,048	19,506	19,840	17,474	19,108
Total Visits to Nurse Practitioner	1,992	1,889	2,596	4,980	2,539
Total Visits to R.N.	7,686	7,594	7,693	7,182	8,385
Total Visits to Non-Professionals for First Aid	-	417	652	601	710
Total Visits to Nutritionist	-	-	-	100	219
Total Visits to Physical Therapist	-	-	-	1,442	1,118
Total	29,726	29,406	30,781	31,779	32,079
Infirmery*					
Admissions:					
Men	289	283	273	266	243
Women	378	389	424	350	396
Total	667	672	697	616	639
Total Patient Days	1,592	1,576	1,542	1,373	1,407
Average Daily Census	7.3	7.3	7.2	6.3	6.4
Average Length of Stay (days)	2.4	2.3	2.2	2.2	2.5
Number of Days in Full Operation	217	216	215	216	218

*Included in Grand Totals
Source: Health Services Office

University Counseling Services

Number of Students, Faculty-Staff Served*

School	1981-82	1982-83	1983-84	1984-85	1985-86
Arts and Sciences	957	998	951	908	961
Education	130	110	127	120	127
Evening College	13	26	22	35	34
Nursing	124	108	111	126	91
Management	302	229	299	283	273
Total Undergraduate	1,526	1,471	1,510	1,472	1,486
Graduate School of Arts & Sciences	40	43	49	91	103
Graduate School of Management	14	18	9	11	15
Law School	82	78	81	98	82
Social Work	14	10	18	24	22
Total Graduate/Professional	150	149	157	224	222
Faculty-Staff	40	25	41	47	42
Total served	1,176	1,645	1,708	1,743	1,750

Counseling Services Provided

Undergraduate and Graduate Students*

Academic	%	Vocational	%	Psychological	%	Total	%
318	18	105	6	1327	76	1750	100

*Includes students served by the College Mental Health Center of Boston

NOTE: These statistics supercede previously published ones which were subject to a computational output error.

Source: University Counseling Services

Alumni



Boston College Alumni Clubs

Albany
 Arizona
 Cape Cod
 Chicago
 Cincinnati
 Cleveland
 Dallas
 Denver
 Detroit
 Fairfield County
 Florida
 Georgia
 Hartford
 Houston
 Los Angeles
 Maine
 Merrimack Valley
 New York
 Mid-Hudson
 Minnesota
 New Haven
 New Jersey
 North Shore
 Northern California (San Francisco)
 Philadelphia
 Rhode Island
 Rochester
 San Diego
 Saint Louis
 Seattle
 Syracuse
 Vermont
 Washington, D.C.
 Western Massachusetts
 Western Pennsylvania
 Wisconsin
 Worcester

Source: Alumni Association

Alumni Association Board of Directors

With Committee Assignments
 1986-1987

Richard T. Horan, '53
President

Marie J. Kelleher, '55, G '69
**Vice President/President Elect Awards,
 Social Activities**

John H. MacKinnon, '62
Treasurer, Continuing Education

William J. Sullivan, Jr., '60
Secretary, Classes, Social Activities

Paul F. Branca, '69, M.B.A. '76
Career Planning & Placement

Martin D. Gavin, '69, M.B.A. '76
MBA Alumni Liaison

Paul F. Branca, '69, M.B.A. '76
 J. Barry Driscoll, '52
Nominations

Karen M. Campbell, '80
 Leon P. Stamps, '75
AHANA Council Liaison

Rev. Richard F. Cronin, OSB, M.A. '67
Admissions

Michele Griffin, '76
Social Activities

Carole Ward McNamara, NC '60
Newton College, Women's Resource

Faith Brouillard-Hughes, NC '67
Newton College Alumni Liaison

John T. Boyle, EC '69
Evening College Alumni Liaison

Elaine M. Moriarty, Esq., Law '73
Law School Alumni Liaison

John J. O'Connell, D.D.S., '55
Annual Fund

Ann R. O'Meara, '59, SW '66
Social Work

John H. MacKinnon, '62
Alumni Continuing Learning

Michael R. Gee, '76
Clubs

Ann G. Wallace, '80
Clubs

Hon. Joseph P. Warner, '58 Law '61
Nominations, Physical Facilities

Boston College Alumni Association

1986 Awards Ceremony

The William V. McKenney Award
 Joseph F. Cotter, '49

Awards of Excellence

Commerce
 Peter S. Lynch, '65

Education
 John R. Coakley, '51, M.Ed. '54
 Weston M. Jenks, Jr., '45, M.A. '50, M.Ed.
 '55

Public Service
 Luella Hennessey Donovan, '65

Religion
 Msgr. Peter F. Hart, '31

Science
 Dr. Gregory J. McCarthy, '64

Young Alumni Achievement Award
 Jeffrey S. Keith, '84

Alumni Comparative Regional Analysis

Fall 1986

Massachusetts	
Metropolitan Boston:	
Postal Areas 01701-02009	11,509
02101-02215	22,341
Outside Metropolitan Boston	13,608
Total Massachusetts Alumni	47,458
New England	
Connecticut	4,735
Maine	1,017
New Hampshire	2,052
Rhode Island	1,968
Vermont	394
Total New England Outside Massachusetts	10,166
Massachusetts	47,458
Total New England	57,624
Total Outside New England	31,210
Total Alumni	88,834

Source: Information Services, University Relations

Alumni Geographic Analysis by State

Fall 1986

Alabama	77	Nevada	43
Alaska	57	New Hampshire	2,052
Arizona	258	New Jersey	3,249
Arkansas	21	New Mexico	83
California*	2,663	New York*	6,701
Colorado	332	North Carolina	306
Connecticut	4,735	North Dakota	11
Delaware	131	Ohio	852
District of Columbia	565	Oklahoma	82
Florida	1,414	Oregon	103
Georgia	384	Pennsylvania	1,518
Guam	4	Puerto Rico	214
Hawaii	128	Rhode Island	1,968
Idaho	69	South Carolina	100
Illinois	1,110	South Dakota	17
Indiana	179	Tennessee	136
Iowa	69	Texas	738
Kansas	72	Utah	37
Kentucky	109	Vermont	394
Louisiana	163	Virgin Islands	30
Maine	1,017	Virginia	1,410
Maryland	1,426	Washington*	267
Massachusetts	47,458	West Virginia	39
Michigan	499	Wisconsin	236
Minnesota	248	Wyoming	19
Mississippi	31	Total U.S.	83,998
Missouri	252	Foreign Nations	1,251
Montana	28	Other	3,585
Nebraska	57	Total Alumni	88,834

*California, New York and Washington include APO addresses.

NOTE: Also included are individuals who attended Boston College for at least one year without graduating. These alumni are referred to as "EX Alumni" (see pages 46-49). Double- and triple-degreed alumni are counted by their primary (or first-received) degree only.

Source: Information Services, University Relations

Living Alumni

By Primary School, Fall 1986

Class	A.&S.	Ed.	S.O.M.	S.O.N.	Evening College	Newton College	Grad. A.&S.	Grad. S.O.M.	Social Work	Law	Weston Theo.	EX Alumni	Hon.	Total	Women	Men	Total	Class
1901	3	-	-	-	-	-	-	-	-	-	-	-	-	3	2	1	3	1901
1902	1	-	-	-	-	-	-	-	-	-	-	-	-	1	1	-	1	1902
1903	-	-	-	-	-	-	-	-	-	-	-	-	-	-	-	-	-	1903
1904	-	-	-	-	-	-	-	-	-	-	-	-	-	-	-	-	-	1904
1905	-	-	-	-	-	-	-	-	-	-	-	-	-	-	-	-	-	1905
1906	-	-	-	-	-	-	-	-	-	-	-	-	-	-	-	-	-	1906
1907	-	-	-	-	-	-	-	-	-	-	-	-	-	-	-	-	-	1907
1908	-	-	-	-	-	-	-	-	-	-	-	-	-	-	-	-	-	1908
1909	-	-	-	-	-	-	-	-	-	-	-	-	-	-	-	-	-	1909
1910	-	-	-	-	-	-	-	-	-	-	-	-	-	-	-	-	-	1910
1911	-	-	-	-	-	-	-	-	-	-	-	4	-	4	4	-	4	1911
1912	-	-	-	-	-	-	-	-	-	-	-	-	-	-	-	-	-	1912
1913	1	-	-	-	-	-	3	-	-	-	-	-	-	4	-	4	4	1913
1914	-	-	-	-	-	-	1	-	-	-	-	1	-	2	1	1	2	1914
1915	4	-	-	-	-	-	2	-	-	-	-	3	-	9	2	7	9	1915
1916	10	-	-	-	-	-	-	-	-	-	-	7	-	17	3	14	17	1916
1917	4	-	-	-	-	-	-	-	-	-	-	7	-	11	5	6	11	1917
1918	5	-	-	-	-	-	-	-	-	-	-	5	-	10	4	6	10	1918
1919	3	-	-	-	-	-	-	-	-	-	-	16	-	19	9	10	19	1919
1920	12	-	-	-	-	-	1	-	-	-	-	20	-	33	9	24	33	1920
1921	13	-	-	-	-	-	1	-	-	-	-	16	-	30	9	21	30	1921
1922	17	-	-	-	-	-	1	-	-	-	-	22	-	40	16	24	40	1922
1923	26	-	-	-	-	-	-	-	-	-	-	19	-	45	12	33	45	1923
1924	33	-	-	-	-	-	-	-	-	-	5	28	-	66	20	46	66	1924
1925	35	-	-	-	-	-	1	-	-	-	6	31	-	73	18	55	73	1925
1926	70	-	-	-	1	-	3	-	-	-	10	31	-	115	19	96	115	1926
1927	70	-	-	-	-	-	8	-	-	-	8	35	1	122	33	89	122	1927
1928	78	-	-	-	1	-	13	-	-	-	9	32	-	133	32	101	133	1928
1929	80	-	-	-	2	-	11	-	-	-	8	46	-	147	42	105	147	1929
1930	91	-	-	-	11	-	11	-	-	-	4	57	-	174	61	113	174	1930
1931	115	-	-	-	7	-	14	-	-	-	13	60	-	209	56	153	209	1931
1932	111	-	-	-	11	-	13	-	-	6	8	55	-	204	43	161	204	1932
1933	141	-	-	-	14	-	26	-	-	10	15	59	-	265	67	198	265	1933
1934	158	-	-	-	18	-	29	-	-	16	12	71	-	304	81	223	304	1934
1935	174	-	-	-	22	-	23	-	-	12	11	57	-	299	70	229	299	1935
1936	149	-	-	-	15	-	16	-	-	19	7	48	-	254	45	209	254	1936
1937	168	-	-	-	16	-	20	-	-	26	3	73	-	306	52	254	306	1937
1938	185	-	-	-	31	-	15	-	11	20	1	56	-	319	61	258	319	1938
1939	212	-	-	-	34	-	29	-	6	28	2	85	-	396	84	312	396	1939
1940	231	1	-	-	25	-	23	-	9	28	2	69	-	388	64	324	388	1940
1941	193	-	-	-	37	-	17	-	15	23	2	47	-	334	64	270	334	1941
1942	191	-	45	-	31	-	28	-	10	13	1	66	-	385	75	310	385	1942
1943	207	-	42	-	22	-	11	-	12	17	1	72	-	384	59	325	384	1943

Living Alumni By Primary School, (Continued)

Class	A.&S.	Ed.	S.O.M.	S.O.N.	Evening College	Newton College	Grad. A.&S.	Grad. S.O.M.	Social Work	Law	Weston Theo.	EX Alumni	Hon.	Total	Women	Men	Total	Class
1944	164	-	50	-	12	-	4	-	11	6	1	75	-	323	37	286	323	1944
1945	103	-	21	-	16	-	9	1	9	5	1	174	-	339	39	300	339	1945
1946	15	-	2	-	25	-	22	-	15	12	3	41	-	134	50	84	134	1946
1947	133	-	22	-	19	-	31	-	21	24	3	47	-	300	57	243	300	1947
1948	162	-	76	-	18	-	32	-	24	44	2	16	-	374	64	310	374	1948
1949	402	-	94	25	35	-	56	-	25	76	1	39	-	753	132	621	753	1949
1950	804	-	304	37	22	33	67	-	25	84	3	64	-	1444	174	1270	1444	1950
1951	755	-	341	41	50	28	92	-	28	97	6	91	-	1529	208	1321	1529	1951
1952	467	-	301	70	56	30	59	-	25	82	1	46	-	1137	182	955	1137	1952
1953	399	-	257	78	51	39	116	-	35	62	1	42	-	1080	244	836	1080	1953
1954	345	-	226	113	64	20	133	-	28	53	2	69	-	1053	277	776	1053	1954
1955	291	-	195	121	73	37	117	-	26	49	3	37	-	949	285	664	949	1955
1956	300	136	284	120	74	36	120	-	28	59	5	85	-	1247	390	857	1247	1956
1957	323	98	256	129	61	50	103	-	27	62	4	81	-	1194	351	843	1194	1957
1958	369	131	350	169	62	58	135	-	24	58	3	140	-	1499	471	1028	1499	1958
1959	359	120	345	151	78	75	121	-	31	73	17	118	-	1488	441	1047	1488	1959
1960	328	131	345	203	130	95	200	2	33	61	18	51	-	1597	582	1015	1597	1960
1961	285	94	288	154	73	102	158	8	33	79	38	30	-	1342	471	871	1342	1961
1962	326	129	241	188	92	123	105	26	40	91	22	48	-	1431	549	882	1431	1962
1963	476	167	329	168	61	140	254	30	32	76	30	45	-	1808	654	1154	1808	1963
1964	479	185	357	134	76	187	216	25	46	81	34	66	1	1887	685	1202	1887	1964
1965	423	181	358	146	78	133	233	34	49	107	42	57	-	1841	614	1227	1841	1965
1966	442	182	344	217	74	158	260	42	52	112	36	43	-	1962	748	1214	1962	1966
1967	453	198	380	182	83	149	418	53	57	92	32	52	-	2149	803	1346	2149	1967
1968	552	281	420	142	64	184	372	49	51	117	28	54	1	2315	828	1487	2315	1968
1969	544	233	400	117	86	188	513	45	51	136	36	74	-	2423	915	1508	2423	1969
1970	532	233	353	145	91	207	477	99	59	115	-	62	1	2374	977	1397	2374	1970
1971	534	284	384	162	68	175	520	75	85	147	-	64	1	2499	1021	1478	2499	1971
1972	614	286	397	137	78	253	570	59	88	173	22	69	-	2746	1138	1608	2746	1972
1973	609	250	318	152	71	245	510	60	79	198	-	56	-	2548	1104	1444	2548	1973
1974	963	323	382	153	79	200	415	67	98	201	-	44	-	2925	1369	1556	2925	1974
1975	927	298	331	208	108	210	548	73	111	176	-	11	-	3001	1606	1395	3001	1975
1976	1158	365	493	226	87	5	586	73	102	204	-	5	1	3306	1713	1593	3306	1976
1977	1033	290	452	162	75	-	419	71	104	219	-	1	-	2826	1542	1284	2826	1977
1978	1213	257	454	169	93	-	483	79	92	193	-	3	-	3036	1556	1480	3036	1978
1979	1107	221	503	195	108	-	456	109	114	219	-	2	-	3034	1674	1360	3034	1979
1980	1185	171	470	201	95	-	481	115	121	227	-	2	-	3068	1706	1362	3068	1980
1981	1177	209	559	173	91	-	501	128	90	237	-	2	-	3167	1770	1397	3167	1981
1982	1239	193	558	177	111	-	521	123	98	210	-	3	-	3233	1872	1366	3233	1982
1983	1264	165	560	180	145	-	421	121	131	228	-	1	1	3217	1959	1258	3217	1983
1984	1361	147	548	138	127	-	367	126	118	235	-	1	-	3168	1814	1354	3168	1984
1985	1159	144	575	144	135	-	423	133	94	259	-	4	5	3075	1834	1241	3075	1985
1986	1225	146	573	148	105	-	243	126	124	217	-	-	1	2907	1678	1229	2907	1986
TOTAL	29,790	6,250	14,583	5,575	3,498	3,160	12,207	1,952	2,597	5,474	522	3,213	13	88,834	37,699	51,135	88,834	TOTAL

Source: Information Services, University Relations

Alumni Donors

By Primary School and Class, 1985-1986

Class	A.&S.	Ed.	S.O.M.	S.O.N.	Evening College	Newton College	Grad. A.&S.	Grad. S.O.M.	Social Work	Law	Weston Theo.	EX Alumni	Total Alumni Donors	Class
1915	-	-	-	-	-	-	-	-	-	-	-	1	1	1915
1916	6	-	-	-	-	-	-	-	-	-	-	1	7	1916
1917	-	-	-	-	-	-	-	-	-	-	-	-	-	1917
1918	2	-	-	-	-	-	-	-	-	-	-	-	2	1918
1919	-	-	-	-	-	-	-	-	-	-	-	3	3	1919
1920	7	-	-	-	-	-	1	-	-	-	-	2	10	1920
1921	3	-	-	-	-	-	-	-	-	-	-	2	5	1921
1922	6	-	-	-	-	-	-	-	-	-	-	2	8	1922
1923	10	-	-	-	-	-	-	-	-	-	-	2	12	1923
1924	17	-	-	-	-	-	-	-	-	-	-	-	17	1924
1925	12	-	-	-	-	-	-	-	-	-	-	5	17	1925
1926	33	-	-	-	-	-	-	-	-	-	-	2	35	1926
1927	36	-	-	-	-	-	-	-	-	-	-	3	39	1927
1928	48	-	-	-	-	-	-	-	-	-	-	4	52	1928
1929	39	-	-	-	-	-	1	-	-	-	-	3	43	1929
1930	47	-	-	-	1	-	-	-	-	-	-	5	53	1930
1931	66	-	-	-	-	-	4	-	-	-	-	6	76	1931
1932	56	-	-	-	1	-	1	-	-	2	1	8	69	1932
1933	69	-	-	-	3	-	2	-	-	2	-	10	86	1933
1934	77	-	-	-	2	-	9	-	-	5	-	10	103	1934
1935	71	-	-	-	3	-	4	-	-	2	-	6	86	1935
1936	98	-	-	-	2	-	-	-	-	8	-	13	121	1936
1937	82	-	-	-	2	-	3	-	-	8	-	10	105	1937
1938	78	-	-	-	6	-	1	-	4	11	-	3	103	1938
1939	108	-	-	-	6	-	4	-	3	7	1	10	139	1939
1940	115	1	-	-	4	-	3	-	2	7	-	10	142	1940
1941	84	-	-	-	2	-	2	-	5	7	-	5	105	1941
1942	87	-	16	-	6	-	5	-	4	8	-	9	135	1942
1943	80	-	24	-	-	-	2	-	-	4	-	9	119	1943
1944	81	-	28	-	4	-	-	-	4	-	-	8	125	1944
1945	51	-	8	-	1	-	1	-	2	1	-	17	81	1945
1946	7	-	1	-	4	-	2	-	6	4	-	6	30	1946
1947	39	-	9	-	2	-	4	-	7	10	-	3	74	1947
1948	56	-	31	-	4	-	4	-	8	7	-	-	110	1948
1949	159	-	35	7	8	-	6	-	6	24	-	2	247	1949
1950	281	-	131	11	5	9	10	-	4	40	-	7	498	1950

Alumni Donors

By Primary School and Class, (Continued)

Class	A.&S.	Ed.	S.O.M.	S.O.N.	Evening College	Newton College	Grad. A.&S.	Grad. S.O.M.	Social Work	Law	Weston Theo.	EX Alumni	Total Alumni Donors	Class
1951	280	—	111	12	9	6	20	—	10	36	—	12	496	1951
1952	165	—	114	17	18	9	7	—	9	31	—	4	374	1952
1953	140	—	87	19	15	10	19	—	6	27	—	3	326	1953
1954	116	—	83	34	17	2	31	—	4	18	—	6	311	1954
1955	107	—	61	40	12	7	14	—	4	15	—	5	265	1955
1956	108	32	94	33	18	4	19	—	7	22	—	13	350	1956
1957	110	18	68	32	18	13	8	—	5	24	—	8	304	1957
1958	119	27	108	38	12	13	17	—	4	21	—	9	368	1958
1959	95	26	104	43	20	15	11	—	5	18	1	2	340	1959
1960	103	35	107	56	25	25	26	2	11	18	—	6	414	1960
1961	77	23	96	39	14	24	19	2	8	22	—	6	330	1961
1962	91	26	87	53	19	31	10	11	5	39	1	4	377	1962
1963	140	60	100	50	20	19	21	6	5	34	1	3	459	1963
1964	160	49	131	28	11	45	25	8	8	26	—	2	493	1964
1965	140	43	114	29	21	28	26	3	9	37	—	2	452	1965
1966	155	44	132	64	15	25	39	17	5	43	2	3	544	1966
1967	154	57	140	54	24	32	58	26	9	42	4	3	603	1967
1968	198	56	160	30	13	35	48	17	9	50	4	2	622	1968
1969	190	55	138	20	22	32	48	16	6	63	4	6	600	1969
1970	179	59	128	31	21	35	45	24	8	42	—	1	573	1970
1971	185	65	154	34	14	30	61	35	9	57	—	3	647	1971
1972	187	61	118	34	15	19	49	20	8	60	—	6	577	1972
1973	165	55	109	38	14	31	50	22	6	86	—	1	577	1973
1974	260	62	109	29	24	20	34	17	6	79	—	1	641	1974
1975	194	52	82	42	23	56	45	17	9	80	—	—	600	1975
1976	286	67	174	48	16	1	51	27	9	63	—	1	743	1976
1977	226	43	152	35	17	—	45	16	2	69	—	1	606	1977
1978	271	45	126	29	16	—	50	28	5	57	—	—	627	1978
1979	267	26	162	31	19	—	37	36	8	57	—	—	643	1979
1980	252	30	139	44	19	—	44	42	3	62	—	1	636	1980
1981	274	55	203	50	31	—	48	39	4	73	—	—	777	1981
1982	261	36	163	29	32	—	49	34	7	57	—	—	668	1982
1983	217	18	145	29	32	—	42	34	9	45	—	—	571	1983
1984	188	10	133	30	25	—	29	26	8	37	—	—	486	1984
1985	95	12	88	9	12	—	20	16	2	17	—	—	271	1985
TOTAL	8,166	1,248	4,503	1,251	719	576	1,234	541	287	1,684	19	301	20,529	TOTAL

Source: Information Services, University Relations

Gifts to the University

Total Volunteer Giving, 1984-1986

Source	Gifts 1984-1985	Gifts 1985-1986
Alumni	\$4,060,853	\$ 4,131,164
Parents	1,187,481	1,100,176
Friends	485,097	711,112
Corporations	569,268	1,789,915
Matching Gifts	511,681	624,515
Foundations	488,939	1,165,383
Planned Giving	540,499	1,072,127
Associations	502,193	502,193
Total	\$8,346,011	\$11,096,585

*Gifts represent cash received as of 5/31/86
Source: Office of Development

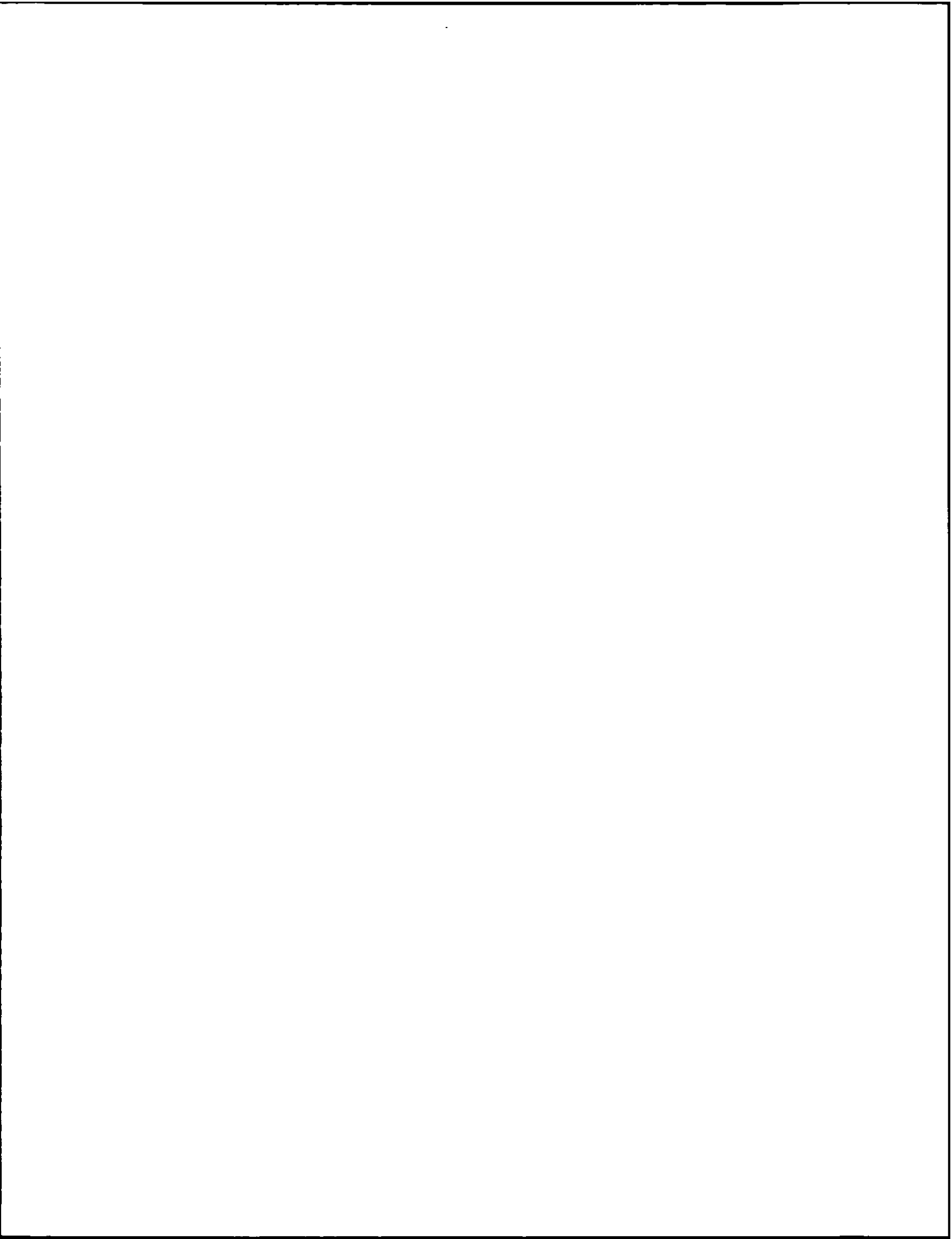
Individual Donors*
By Giving Club

Giving Club	Level of Gift	1981-82	1982-83	1983-84	1984-85	1985-86
President's Circle	\$5,000 +	126	135	167	217	249
Gasson Society	\$2,500-\$4,999	—	—	—	—	64
FIDES	\$1,000-\$2,499**	666	866	941	1109	1102
Tower Builders	\$500-\$999	330	359	415	441	457
John Bapst Associates	\$250-\$499	673	764	1093	961	1182
McElroy Associates	\$100-\$249	2973	3764	5401	4466	5148
Other Annual Fund	\$1-\$99	12,326	14,953	12,294	14,998	14,708
Total Individual Donors		17,094	20,841	20,311	22,192	22,910

*Includes only alumni, parents and friends.

**Prior to 1985-86, gift levels for Fides were \$1,000-\$4,999.

Source: Office of Development



Physical Plant

Physical Plant



Buildings Related to Boston College Operations

Location and Primary Use

Fall 1986

Name	Location	Primary Use	Date Constructed or Acquired
Alumni Stadium	Lower Campus	Sports	1957
Bapst Library	Middle Campus	Library	1928
Barat House	885 Centre Street	Jesuit Residence & Administrative	1974
Barry Fine Arts Pavilion	885 Centre Street	Academic & Administrative	1974
Bea House ¹	176 Commonwealth Avenue	Jesuit Residence	1965
Botolph House	18 Old Colony Road	Administrative	1967
Bourneuf House	36 College Road	Administrative	1974
Brock House	78 College Road	Administrative	1972
Campion Hall ²	Middle Campus	Academic & Administrative	1955
Canisius House ¹	67 Lee Road	Jesuit Residence	1966
Carney Hall	Middle Campus	Academic & Administrative	1962
Cheverus Hall	127 Hammond Street	Student Residence	1960
Claver Hall	40 Tudor Road	Student Residence	1955
Connolly Faculty Center	300 Hammond Street	Academic	1975
Cottage and Garage	885 Centre Street	Residence	1974
Cushing Hall	Middle Campus	Academic & Administrative	1960
Cushing House	885 Centre Street	Student Residence	1974
Daly House ¹	262 Beacon Street	Jesuit Residence	1981
Devlin Hall	Middle Campus	Academic & Administrative	1924
Donaldson House	90 College Road	Administrative	1975
Duchesne East	885 Centre Street	Student Residence	1974
Duchesne West	885 Centre Street	Student Residence	1974
Edmond's Hall	200 St. Thomas More Drive	Student Residence	1975
Faber House	102 College Road	Academic	1938
Fenwick Hall	46 Tudor Road	Student Residence	1960
Fitzpatrick Hall	137 Hammond Street	Student Residence	1960
William J. Flynn Student Recreation Complex	Lower Campus	Sports & Administrative	1972
Fulton Hall	Middle Campus	Academic & Administrative	1948
Gasson Hall	Middle Campus	Academic & Administrative	1913
Gonzaga Hall	149 Hammond Street	Student Residence	1958
Greycliff Hall	2051 Commonwealth Avenue	Student Residence	1969
Gym (Newton)	885 Centre Street	Gymnasium	1974
Haley House	314 Hammond Street	Academic	1969
Hancock House	223 Beacon Street	Academic	1907
Hardey House	885 Centre Street	Student Residence	1974
Higgins Hall	Middle Campus	Academic & Administrative	1966
Hillside A	100 Commonwealth Avenue	Student Residence	1973
Hillside B	100 Commonwealth Avenue	Student Residence	1973
Hillside C (Renamed Rubenstein Hall)			
Hillside D	90 Commonwealth Avenue	Student Residence	1973
Hopkins House	116 College Road	Administrative	1968
Hovey House	258 Hammond Street	Academic & Administrative	1971
Kenny-Cottle Library	885 Centre Street	Library	1974
Keyes North	885 Centre Street	Student Residence	1974
Keyes South	885 Centre Street	Student Residence	1974
Kostka Hall	149 Hammond Street	Student Residence	1957

Buildings Related to Boston College Operations (Continued)

Name	Location	Primary Use	Date Constructed or Acquired
Lawrence House	122 College Road	Administrative	1968
Loyola Hall	42 Tudor Road	Student Residence	1955
Lyons Hall	Middle Campus	Academic & Administrative	1951
McElroy Commons ²	Middle Campus	Student Services & Administrative	1960
McGuinn Hall	Middle Campus	Academic & Administrative	1968
Medeiros Townhouses	60 Tudor Road	Student Residence	1971
Mill Street Cottage	29 Mill Street	Residence	1974
Modular Apartments	Lower Campus	Student Residence	1970
Murray House	292 Hammond Street	Commuter Center	1967
O'Connell Hall	185 Hammond Street	Student Union	1938
Thomas P. O'Neill, Jr. Library	Middle Campus	Central Research Library	1984
Parking Garage	2599 Beacon Street	General Use Parking Facility	1979
Putnam Center	885 Centre Street	Administrative	1974
Rahner House	96 College Road	Administrative	1952
Roberts Center	Middle Campus	Academic, Administrative & Gym	1958
Robsham Theater Arts Center	Lower Campus	Student Services & Academic	1981
Roncalli Hall	182 Hammond Street	Student Residence	1965
Rubenstein Hall	90 Commonwealth Avenue	Student Residence	1973
Service Building	Middle Campus	Administrative & Trade Shops	1948
Shaw House	377 Beacon Street	Student Residence	1962
Commander Shea Field	Lower Campus	Baseball Diamond	1960
Southwell Hall	38 Commonwealth Avenue	Administrative	1937
St. Mary's Hall ³	Middle Campus	Jesuit Residence	1917
St. Mary's House	885 Centre Street	Academic & Administrative	1974
St. Thomas More Hall	St. Thomas More Drive	Administrative	1955
James W. Smith Wing	885 Centre Street	Academic & Administrative	1974
Stuart House (Law School)	885 Centre Street	Academic & Administrative	1974
Trinity Chapel (Newton)	885 Centre Street	Chapel	1974
Michael P. Walsh Hall	150 St. Thomas More Drive	Student Residence & Dining Facility	1980
Welch Hall	200 Hammond Street	Student Residence	1965
Weston Observatory ⁴	Weston, MA	Research & Administrative	1948
Williams Hall	143 Hammond Street	Student Residence	1965
Xavier Hall	44 Tudor Road	Student Residence	1955
— — —	72 College Road	Administrative	1970
— — —	84 College Road	Administrative	1985
— — —	66 Commonwealth Avenue ⁵	Student Residence	1985
— — —	31 Lawrence Avenue	Academic	1979
— — —	55 Lee Road	Residence	1978

¹Rented to Jesuit Community of Boston College.

²Student Services in McElroy Commons include bookstore, dining halls, mail room, U.S. Post Office.

³Owned by the Jesuit Community of Boston College.

⁴Land rented from the New England Province of the Society of Jesus. Building owned by Boston College.

⁵Leased from Baptist Home of Massachusetts.

Source: Space Management

Boston College Properties

Fall 1986

	Square Feet	Acres
Upper Campus		
Roncalli, Welch, and Williams	137,446	3.1
O'Connell and Upper Campus Dormitories	472,838	10.9
Total Upper Campus	610,284	14.0
Middle Campus		
Area bounded by Beacon Street, Lower Campus Road, College Road, and Commonwealth Avenue—including Hillside, Southwell		
	1,677,845	38.5
18 Old Colony Road (Botolph)	17,346	0.4
122 College Road (Lawrence)	9,579	0.2
116 College Road (Hopkins)	7,349	0.2
102 College Road (Faber)	7,191	0.2
96 College Road (Rahner)	6,463	0.1
90 College Road (Donaldson)	7,960	0.2
84 College Road	7,460	0.2
78 College Road (Brock)	6,308	0.1
72 College Road	7,100	0.2
36 College Road (Bourneuf)	9,126	0.2
176 Commonwealth (Bea)	18,184	0.4
Total Middle Campus	1,781,911	40.9
Lower Campus		
Area bounded by Lower Campus Road, Beacon Street, and St. Thomas More Drive (excluding MDC property)		
	2,279,266	52.3
2150 Commonwealth Avenue (St. Thomas More Hall)	156,575	3.6
Total Lower Campus	2,435,841	55.9
Total Upper, Middle and Lower Campuses	4,828,036	110.8
Newton Campus	1,751,112	40.2
Total Chestnut Hill and Newton Campuses	6,579,148	151.0
Outlying Properties		
Newton		
262 Beacon Street (Daly)	19,793	0.5
258 Hammond Street (Hovey)	178,390	4.1
292 Hammond Street (Murray)	50,554	1.2
300 Hammond Street (Connolly)	70,767	1.6
314 Hammond Street (Haley)	55,710	1.3
31 Lawrence Avenue	13,109	0.3
67 Lee Road (Canisius)	10,436	0.2
55 Lee Road	16,032	0.4
	414,791	9.6
Boston		
2051 Commonwealth (Greycliff)	4,623	0.1
Total Properties Owned by Boston College	6,998,562	160.7

NOTE: The above statistics do not include rented properties used in University operations.
Source: Buildings and Grounds

Facility Capacities

Fall 1986

Facility	Location	Lecture Seating	Dinner Seating	Reception/ Standing
Athletics				
Alumni Stadium:	Lower Campus			
Sporting Events		32,000	—	—
Field Seating		3,000	—	—
William J. Flynn Student Recreation Complex	Lower Campus	4,000	2,500	4,000
Roberts Center:	Middle Campus			
Sporting Events		4,000	—	—
Floor Seating		800	550	—
Auditoriums				
Barry Fine Arts Pavilion 223	Newton Campus	330	—	—
Cushing Hall 001	Middle Campus	177	—	—
Devlin Hall 008	Middle Campus	322	—	—
Fulton Hall 412	Middle Campus	224	—	—
Gasson Hall 305	Middle Campus	104	—	—
Higgins Hall 304	Middle Campus	160	—	—
Higgins Hall 307	Middle Campus	160	—	—
McGuinn Hall 121	Middle Campus	266	—	—
Robsham Theater Arts Center	Lower Campus	591	—	200
Stuart Hall 411	Newton Campus	130	—	—
Stuart Hall 315	Newton Campus	178	—	—
Conference Rooms				
Murray Conference Room	McElroy Commons	100	—	—
Roberts Lounge	St. Thomas More Hall	30	—	75
Trustees' Board Room	McElroy Commons	40	40	—
Dining Halls*				
Eagle's Nest	McElroy Commons	—	450	—
Faculty Dining Room	McElroy Commons	—	125	—
Lyons Cafeteria	Lyons Hall	—	500	—
McElroy Dining Hall	McElroy Commons	—	900	—
Newton Campus Cafeteria	Stuart House	—	250	—
Newton Campus Snack Bar	Stuart House	—	200	—
Walsh Hall Dining Facilities:	Michael P. Walsh Hall	—	518	—
Dining Room		—	(360)	—
Golden Lantern		—	(108)	—
Function Rooms		—	(50)	—
Houses				
Barat House	Newton Campus	46	12	100
Haley House	314 Hammond Street	35	25	—
Hovey House	258 Hammon Street	25	—	—
O'Connell Hall	185 Hammond Street	—	—	200
Lounges				
Cushing Faculty Lounge	Middle Campus	—	60	100
Devlin 103	Middle Campus	50	100	200
McGuinn 3rd Floor Lounge	Middle Campus	—	50	75
McGuinn 5th Floor Lounge	Middle Campus	—	50	75
Multi-Purpose				
Campion Gym	Middle Campus	300	—	—
Gasson T-100	Middle Campus	300	200	400
Newton Chapel	Newton Campus	500	—	—
Robsham Theater	Kresge Room & Lobby	—	—	200

*Capacities shown for dining facilities are those used for function seating, and therefore differ from capacities for student dining.

Note: University facilities are available for function purposes through the Bureau of Conferences and/or the primary user responsible for the facility. All facilities are not available to all groups. The capacity figures are those used by the Bureau of Conferences in determining appropriate space needs for functions being scheduled.

Source: Bureau of Conferences

Dining Facilities

Fall 1986

Name	Location	Capacity
The Club	O'Connell House	64
Eagle's Nest Snack Bar	McElroy Commons	450
Faculty Dining Room	McElroy Commons	175
Lyons Cafeteria	Lyons Hall	550
McElroy Dining Hall	McElroy Commons	1,000
McElroy Resident Lounge	McElroy Commons	40
Newton Campus Cafeteria	Stuart House	360
Newton Campus Snack Bar	Stuart House	200
J. C. Scoops	Roncalli	18
Trustees' Board Room	McElroy Commons	40
Walsh Hall Dining Facilities	Michael P. Walsh Hall	600
Total Capacity		3,547

Source: Dining Department

Offices

Fall 1986

Building	Offices	Building	Offices	Building	Offices	Building	Offices
Chestnut Hill Campus				Newton Campus			
Botolph House	10	Hillside B	3	Roberts Center	24	Barat House	7
Bourneuf House	9	Hillside D	7	Rubenstein Hall	12	Barry Fine Arts Pavilion	25
Brock House	7	Hovey House	10	Service Building	26	Kenny-Cottle Library	11
Campion Hall	56	Hopkins House	11	Southwell Hall	26	James W. Smith Wing	21
Carney Hall	234	Lawrence House	11	St. Thomas More Hall	115	Stuart House	65
Cushing Hall	67	Lyons Hall	99	31 Lawrence Avenue	8	St. Mary's House	3
Devlin Hall	40	McElroy Commons	32	72 College Road	8	Subtotal	132
Donaldson House	7	McGuinn Hall	188	84 College Road	9	Weston Observatory*	17
Fulton Hall	110	Murray House	3	Subtotal	1,267	Total Offices	1,416
Gasson Hall	30	O'Neill Library	45				
Higgins Hall	54	Rahner	6				

*In addition to 17 offices, Weston Observatory houses 12 laboratories.
Source: Space Management

Classrooms Fall 1986

Building	Number of Classrooms	Stations
Barry	5	470
Campion	13	651
Carney	25	1,107
Cushing	11	818
Devlin	2	373
Fulton	13	934
Gasson	18	883
Higgins	6	549
Kenny-Cottle Library	1	125
Lyons	7	310
McGuinn	12	515
O'Neill Library	9	444
Stuart	7	525
Theater Arts Center	1	20
Total	130	7,724

Source: Space Management

Summary of Building Use Fall 1986

Building Use	Number of Buildings
Student Residences ¹	24
Administrative	13
Academic and Administrative ²	20
Jesuit Residence	5
Miscellaneous Use ³	17
Total	79

¹Keyes North and South = 1, Duchesne East and West = 1, Hillside A&B = 1, Hillside C&D = 1, Modulars = 1

²Includes Weston Observatory.

³Includes gymnasiums, libraries, student union, etc.

Source: Space Management

Residence Hall Capacities 1986-1987

Residence Hall	Address	Living Units	Students	Staff*	Total
Chestnut Hill Campus					
Upper Campus					
Cheverus	127 Hammond Street	67	133	3	136
Claver	40 Tudor Road	40	76	3	79
Fenwick	46 Tudor Road	73	139	3	142
Fitzpatrick	137 Hammond Street	73	141	3	144
Gonzaga	149 Hammond Street	78	151	3	154
Kostka	149 Hammond Street	80	156	3	159
Loyola	42 Tudor Road	51	96	3	99
Medeiros Townhouses	60 Tudor Road	50	98	2	100
Roncalli	182 Hammond Street	69	134	3	137
Shaw	377 Beacon Street	7	19	1	20
Welch	200 Hammond Street	77	153	3	156
Williams	142 Hammond Street	72	141	3	144
Xavier	44 Tudor Road	40	76	3	79
		777	1,513	36	1,549
Lower Campus					
Greycliff	2051 Commonwealth Avenue	27	38	2	40
Edmond's Hall	200 St. Thomas More Drive	205	788	9	797
Hillside A	100 Commonwealth Avenue	36	210	3	213
Hillside B	100 Commonwealth Avenue	29	152	2	154
Hillside D	90 Commonwealth Avenue	35	182	2	184
Modulars	St. Thomas More Drive	86	498	9	507
Michael P. Walsh Hall	150 St. Thomas More Drive	139	782	16	798
Rubenstein Hall	90 Commonwealth Avenue	30	174	3	177
66 Commonwealth Avenue	66 Commonwealth Avenue	124	140	4	144
		711	2,964	50	3,014
Newton Campus					
Cushing	885 Centre Street	65	119	4	123
Duchesne East	885 Centre Street	65	132	4	136
Duchesne West	885 Centre Street	72	131	4	135
Hardey	885 Centre Street	96	172	4	176
Keyes North	885 Centre Street	77	144	5	149
Keyes South	885 Centre Street	57	105	3	108
		432	803	24	827
Total		1,920	5,280	110	5,390

*Assistant Directors not included.
Source: Housing Office



Highlights of Financial Operations

For the Five Years Ending May 31, 1986 (Dollars in Millions)

	1982	1983	1984	1985	1986
Revenues					
Tuition and Fees	\$ 60.2	\$ 69.4	\$ 79.4	\$ 86.9	\$ 96.2
Contracts and Grants	13.8	12.6	11.8	12.4	12.8
Gifts, Investments and Other*	12.5	13.2	13.4	17.9	21.4
Auxiliary Enterprises**	21.2	24.4	28.6	33.9	33.4
Total Revenue	\$107.7	\$119.6	\$133.2	\$151.1	\$163.8
Expenditures and Transfers					
Instruction	\$ 35.3	\$ 39.3	\$ 42.0	\$ 45.9	\$ 48.7
Libraries	3.9	4.4	4.7	6.6	7.2
Sponsored Research	4.8	3.8	3.5	3.6	3.5
Student Services	4.2	4.8	4.7	5.9	5.9
Plant Maintenance	8.2	8.8	9.3	10.4	9.5
General Administration	9.6	11.2	12.5	14.9	17.3
Student Aid/Loans	11.1	12.8	15.0	15.9	18.2
Auxiliary Enterprises**	21.3	23.0	24.1	29.6	31.5
Other Transfers (Net)*	9.1	11.3	17.2	18.1	21.1
Total Expenditures and Transfers	\$107.5	\$119.4	\$133.0	\$150.9	\$162.9

* Gifts and Other Transfers include gifts restricted to Endowments and Plant Funds.

** Auxiliary enterprises have been restated to include Organized Activities for the years 1982-1985.

Source: Office of the Controller

Boston College Tuition Restated in 1967 Dollars

Academic Year	Consumer Price Index*	Tuition in Absolute Dollars	Tuition in 1967 Dollars
1977-78	186.1	3,420	1,838
1978-79	202.9	3,645	1,796
1979-80	229.9	3,980	1,731
1980-81	258.4	4,530	1,753
1981-82	281.5	5,180	1,840
1982-83	292.4	6,000	2,052
1983-84	303.5	6,800	2,240
1984-85	317.0	7,475	2,358
1985-86	327.4	8,200	2,505
1986-87	334.0**	9,120	2,731**

* CPI measured at December 31st of academic year.

Source: Department of Commerce Economic Indicators, July 1986

** Estimate

Source: Office of the Controller

Tuition and Fees

For the Ten Years Ending May 31, 1987

	1978	1979	1980	1981	1982	1983	1984	1985	1986	1987
Undergraduate Schools										
Arts & Sciences, Education, Management, Nursing	\$3,420	\$3,645	\$3,980	\$4,530	\$5,180	\$6,000	\$6,800	\$7,475	\$8,200	\$9,120
Evening College (per course)	220	230	240	250	275	305	335	355	380	412
Summer Session (per credit hour)	75	80	88	96	106	120	134	143	155	168
Graduate Schools										
Arts & Sciences (per credit hour)	105	113	130	150	170	194	218	238	258	280
Law School	3,500	3,810	4,200	4,900	5,625	6,575	7,450	8,200	8,920	9,820
Management (per credit hour)	100	113	130	150	180	210	240	265	288	318
Social Work	3,380	3,645	3,980	4,600	5,260	5,900	6,540	7,135	7,730	8,350
MSW part-time (per credit hour)	-	-	110	130	150	170	185	200	214	230
DSW part-time (per credit hour)	-	-	130	150	170	190	210	228	245	265
Room Charge Per Student										
Upper Campus, South Street*	850	950	1,050	1,190	1,350	1,510	1,645	1,775	1,940	2,300
Modulars	1,050	1,150	1,250	1,450	1,640	1,850	2,015	2,180	2,400	2,820
Hillside-3 bedroom	1,050	1,150	1,250	1,450	1,640	1,840	2,005	2,160	2,360	2,750
Hillside-2 bedroom	1,100	1,200	1,300	1,490	1,680	1,880	2,050	2,200	2,400	2,820
Exmond's Hall (Reservoir)	1,100	1,200	1,300	1,490	1,680	1,880	2,050	2,200	2,400	2,820
Newton	850	950	1,050	1,190	1,350	1,510	1,645	1,775	1,940	2,300
66 Commonwealth Avenue	-	-	-	-	-	-	-	-	1,940	2,500
Pine Manor, St. Gabriel's	-	950	1,050	-	-	-	-	-	-	-
Walsh Hall	-	-	-	1,330	1,500	1,680	1,830	1,960	2,150	2,520
Board Per Student	825	875	1,025	1,236	1,434	1,600	1,725	1,840	1,950	2,070
Representative Fees										
Laboratory (Science)	100	100	100	120	130	144	154	220	230	240
Undergraduate Government	24	24	24	24	30	30	32	32	32	32
Graduate Student Association	5	5	5	7	7	7	10	10	12	12
Health/Infirmary	70	70	80	91	97	112	120	130	140	150
Recreation	32	32	35	45	52	60	65	65	70	76

* South Street properties sold in 1981.

Source: Office of the Financial Vice President and Treasurer

Summary of Contract and Grant Awards
 1985-1986

	Number of Awards	Award Total
Biology	4	\$ 399,620
Chemistry	15	891,714
Geology and Geophysics	5	295,825
Physics	9	4,190,937
Political Science	2	69,436
Psychology	1	87,597
Social Welfare Research Institute	3	493,007
Sociology	3	141,864
Space Data Analysis Laboratory	2	1,051,596
School of Education:	10	240,284
Special Education	6	547,906
Campus School	3	763,874
Center for Testing	5	212,151
Theology	1	35,000
School of Management	1	243,709
School of Nursing	3	313,524
School of Social Work	1	34,208
Other	2	160,032
Total	76	\$10,172,284

Source: Office of Research Administration

Contracts and Grants*

Source and Application of Funding (Thousands of Dollars)

	1982	1983	1984	1985	1986
Source					
Government:					
Federal	\$12,225	\$10,680	\$ 9,440	\$ 9,735	\$ 9,953
State	747	661	946	1,360	1,438
Local	162	616	870	951	920
Non-Government	<u>702</u>	<u>669</u>	<u>557</u>	<u>492</u>	<u>544</u>
Total	\$13,836	\$12,626	\$11,813	\$12,538	\$12,855
Application					
Sponsored Research	6,241	5,222	4,734	5,007	5,049
Other Sponsored Programs	3,210	2,522	2,192	2,206	2,323
Student Aid	<u>4,385</u>	<u>4,882</u>	<u>4,887</u>	<u>5,325</u>	<u>5,483</u>
Total	\$13,836	\$12,626	\$11,813	\$12,538	\$12,855

*The amounts represent actual accounted expenditures for the referenced fiscal year. They are not reflective of awards made to the University for that year.

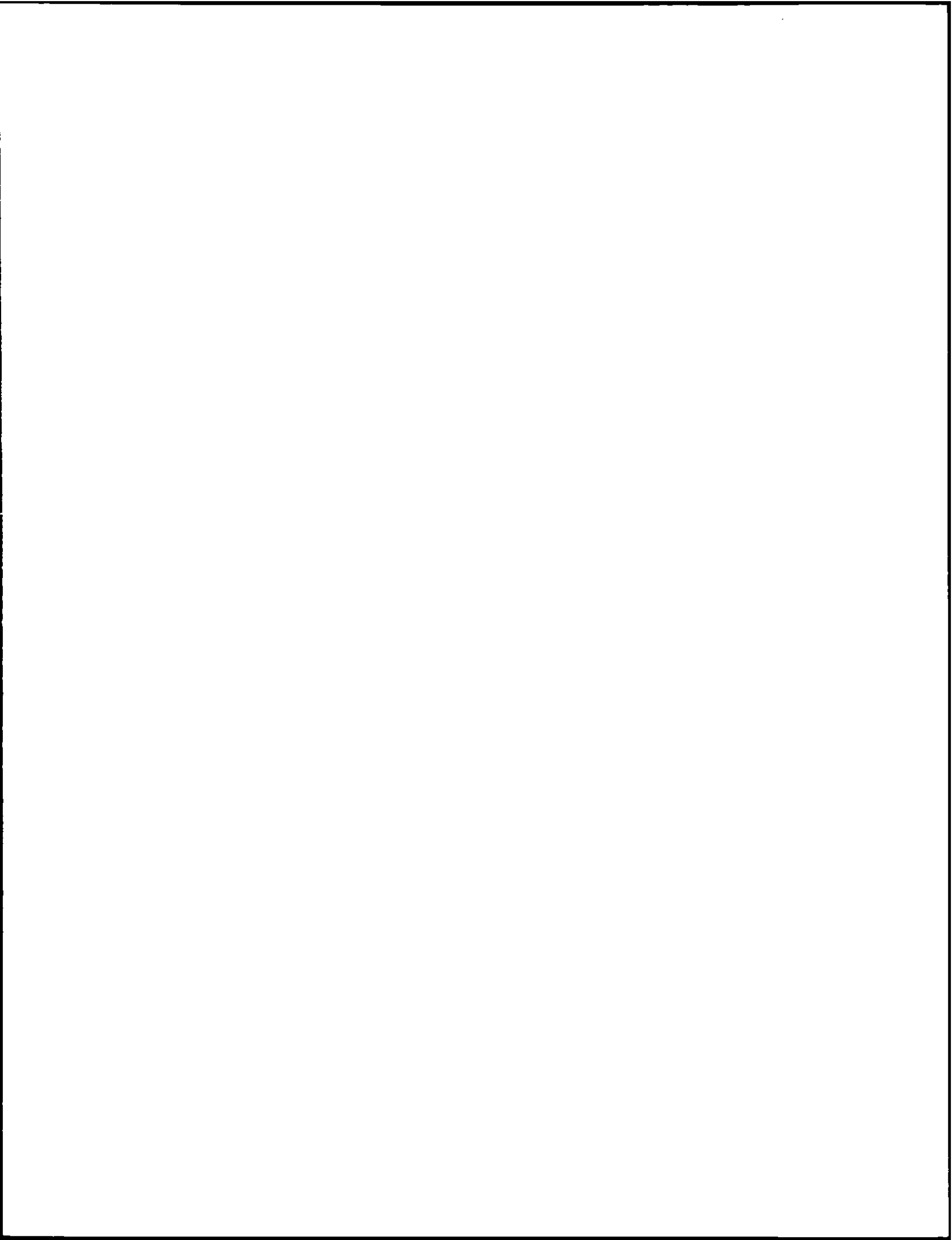
Source: Office of the Controller

Selected Contract and Grant Awards*

1985-1986

Title	Source of Funding	Amount
Biology Department		
Histone-DNA Interactions During Chromatin Biosynthesis	National Institutes of Health	\$157,279
Chemistry Department		
The Molecular Basis of Cellular Control Mechanisms	National Institutes of Health	139,824
Practical Synthesis of the Anticancer Drug Adriamycin	National Institutes of Health	153,129
Geology & Geophysics Department		
Multidisciplinary Geophysical Study of the Earth's Upper Structure	Air Force office of Scientific Research	119,435
Physics Department		
The Earth's Radiation Belts, Auroral Zones; and Polar Caps; Particle Models, Event Studies and Effects on Material	United States Air Force	3,461,559
Model Studies of Polar Ionosphere	United States Air Force	323,983
Greenland Imaging Experiments	National Science Foundation	110,000
Psychology Department		
Neural Basis of Maternal Behavior	National Institutes of Health	87,597
Social Welfare Research Institute		
MRPIS — Level 2.0 Development Program	Department of Health & Human Services	478,132
Sociology Department		
FIPSE — Worker Education for the Eighties	United States Department of Education	84,674
Space Data Analysis Laboratory		
CIRRIS	Utah State University	1,008,596
School of Education — Division of Education		
Pre-Service Programs for Low Incidence & Special Target Population	United States Department of Education	149,964
Project TRYAD	United States Department of Education	118,820
District III and IV Collaborative	City Of Boston	153,546
School of Nursing		
MCH Clinical Specialist Acute Care Curriculum	National Institutes of Health	116,319
Other		
Special Services Program "Learning to Learn"	United States Department of Education	111,432

*Selected awards are greater than \$80,000
Source: Office of Research Administration



Libraries

1. *Journal of the American Library Association*, 1978, 29(1), 1-10.



Boston College Libraries

Bapst Library

Middle Campus

The John J. Burns Library of Rare Books and Special Collections

Middle Campus

Geophysics Library

Weston Observatory

Weston, MA

Law Library

Kenny-Cottle Library

Newton Campus

Newton Study Center (Undergraduate)

Kenny-Cottle Library

Newton Campus

O'Neill Library

Central Library, Middle Campus

School of Social Work Library

McGuinn Hall, Basement

Source: University Librarian

Expenditures for Library Materials

Library	1981-82	1982-83	1983-84	1984-85	1985-86
Law	261,680	294,722	345,095	387,501	425,158
O'Neill*	\$ 958,633	\$1,074,443	\$1,211,789	\$1,277,824	\$1,330,680
Social Work	19,955	28,035	24,035	26,013	25,517
Total	\$1,240,268	\$1,397,200	\$1,580,919	\$1,691,338	\$1,781,355

*Includes Special Collections and other general expenditures recorded as "University Librarian."

Source: Office of the Controller

Holdings by Individual Libraries

1986

Library	Volumes	Serial Subscriptions	Microform Units	Government Document Volumes	Media Units
Bapst	94	-	-	-	-
Burns Special Collections	50,025	8	10	-	27
Law	152,949	2,523	469,142	-	-
O'Neill & Newton Study Center	747,011	7,322	891,034	112,500	8,335
Social Work	30,333	424	3,184	5,008	60
Weston Geophysics	6,755	31	188	-	-
Total	987,167	10,308	1,363,558	117,508	8,422

Source: University Librarian

Circulation Statistics

Library	Monographs	Reserves	Microforms	Government Documents	Media	Interlibrary Loans
Law	199	4,894	-	-	-	360
O'Neill and Newton Study Center	149,081	76,524	32,352	849	2,028	9,642
Social Work	5,031	33,054	-	-	84	256
Weston Geophysics	541	-	-	-	-	47
Total	154,852	114,472	32,352	849	2,112	10,305

Source: University Librarian

Special Library Services

Computer Search Service

In 1974, the Boston College Nursing Library became the first nursing library in the United States to receive a contract from the National Library of Medicine for the MEDLINE database. Since then the Boston College Libraries have added computerized databases for the humanities, social sciences, education, medicine and health sciences, business and economics, pure and applied sciences, and engineering. These include among others: BRS Inc., DIALOG, SDC (System Development Corporation), NLM (National Library of Medicine), Dow-Jones Retrieval Service, VU-TEXT, Mead Data Central (for NEXIS only on Chestnut Hill campus), Pergamon-Infoline, H. W. Wilson Company (WILSONLINE), and STN International. There are also available in the libraries many multidisciplinary databases which cover specific types of publications (e.g., dissertations, government publications, patents).

The Law School Library has access to LEXIS and WESTLAW as well as NEXIS and DIALOG. Access to some of these files may be limited by contract to members of the Law School community.

Since September 1985, the Libraries have offered access to BRS After Dark, a system designed for use by individuals who have little or no system or database experience. Other end-user systems will be added. These systems do not replace the traditional computer search process; they are an adjunct to it.

Contact the appropriate reference librarian or service desk for more information or to arrange for small group discussions or demonstrations, presentations to classes, or to department meetings.

Automated Catalog

The Boston College libraries have an automated online catalog which provides access to almost a half-million bibliographical records. The catalog may be searched by author, title, subject, call-number, or keyword-in-subject headings and titles.

Interlibrary Loan

The Interlibrary Loan Service is offered to students, faculty, administration and staff to facilitate obtaining materials not available in the Boston College Libraries. Books, photocopies of journal articles, microfilm, theses, and government documents may be borrowed from other libraries. Except for unusual items, the waiting period is from one to four weeks; for anyone

willing to use the material at the holding library, a computerized system will provide locations within twenty-four hours of the request. Request forms and further information are available from the reference staff in each library.

Boston Library Consortium

The library is a member of the Boston Library Consortium, a group of area libraries which includes Brandeis, Boston University, Tufts, Wellesley, Northeastern, MIT, Massachusetts State Library, Boston Public Library, and University of Massachusetts. Faculty and graduate students may apply for a Consortium borrower's card at the reference department in O'Neill. The Consortium maintains a central office at the Boston Public Library. Further information may be found in the User Guide and the Consortium Handbook, available in all libraries.

United States Government Publications

In 1964 Boston College was designated as one of the Federal Depository Libraries for this congressional district. This status entitles the O'Neill Library to receive, on a selective basis, United States government publications at no cost with the stipulation that they be made available to the general public. Most of the material circulates in the same manner as books. Inquiries related to the use of government documents should be directed to the Government Documents Department on the first floor of the O'Neill Library.

Media Services

The Media Services Department in O'Neill Library houses information in many formats — videocassettes, 16mm films, audiocassettes, 35mm slides, phonograph records, filmstrips, and computer disks. All materials are used in the library in small group rooms or individually with headsets. The Department collects materials in all subject areas within the university's teaching and research interests.

New England Library Information Network/OCLC

Through membership in the New England Library Information Network (NELINET), our users have online access to publishing, cataloging, and inter-library loan location information from the data bank of OCLC, Inc. which contains over 10 million records from the Library of Congress and some 2,900 other contributing institutions in North America.

Source: University Librarian

Special Collections

Rare and valuable books, manuscripts and archives form Special Collections. Access is controlled because of their scarcity, value or fragile nature. Outstanding collections are listed below. Contact Special Collections for further information.

Hilaire Belloc Collection and Archives, 1870–1953

The world's most complete assemblage of materials dealing with this controversial British Catholic "publicist." Includes his personal library, all published works, most of his correspondence and manuscripts.

Banking Archives

Archives of several banks, including the Hibernia Savings Bank, the Union Warren, The Provident Institution for Savings, and the Yankee Bank for Finance and Savings. Also included is the Savings Banks Association of Massachusetts.

Liturgy and Life, 1925–1975

Formed by William J. Leonard, S.J., this ever-growing collection of books, ephemera, and the personal papers of the twentieth century pioneer liturgists documents the life of the Church in America in the pre-Vatican II era. Highlights include books on pastoral and devotional literature and liturgical theory and commentary, and thousands of devotional items.

Citywide Coordinating Council Archives, 1975–1978

Complete records of the council formed to desegregate the Boston school system as ordered by Judge Arthur Garrity.

Thomas P. O'Neill, Jr. Papers

Covers his entire political career from Cambridge to the Speaker of the House of Representatives. Extensive correspondence and memorabilia.

Robert F. Drinan, S.J. Papers, 1970–

Covers his congressional term as representative for the Fourth Massachusetts Congressional District, 1970–1980 and his continuing work for the Americans for Democratic Action, 1980–.

Irish Collection

Formed by Helen Landreth, the eminent scholar of Robert Emmet and the Irish Rebellion, the collection richly represents the periods 1790–1810 and 1850–1885. Included also are samplings of the Irish literary

renaissance poets and playwrights, and writers and private presses of Ireland today.

Jesuitana Collection, 1543–1773

Includes rare works dealing with missionary letters written from the Far East in the sixteenth and seventeenth centuries, works of science, on Biblical exegesis and on classical scholarship. An original holograph letter from St. Francis Xavier to John III, King of Portugal, dated 31 January 1552 crowns this exceptional body of unusual works.

Rex Stout Collection and Archives, 1886–1975

Famed creator of the Nero Wolfe mysteries, Stout is here represented by the best collection in existence of his personal manuscripts, correspondence, editions and secondary sources, together with his own library.

Francis Thompson Collection, 1859–1907

The most complete body of original material by Francis Thompson, one of the foremost poets of the British Catholic literary renaissance. Includes autograph manuscripts, 1500 frames of microfilm of hitherto unknown manuscripts, and first editions. There is also material by and about Coventry Patmore.

Meynell Family Collection

The Meynell Family Collection is both an adjunct to the Francis Thompson Collection and important in its own right. Includes correspondence, first editions and works about the poet Alice Meynell, her publisher husband Wilfred, and their children Francis, the proprietor of the Nonesuch Press, and Viola.

Nicholas M. Williams Collection

A collection assembled by Joseph Williams, S.J. in honor of his father. The emphasis on Jamaica and its black culture is supplemented by West African roots and South American parallelisms. Includes the Anansi Folktale Archives.

Rita Kelleher Collection

In recognition of her twenty-five years of service to the School of Nursing, including twenty years as Dean, this collection contains archival, historical, research, and other significant materials in nursing.

Other collections include:

Maurice Baring Collection, 1874–1945
 Bookbuilders of Boston Archives, 1938–
 Burns, Oates and Washbourne Collection, 1847–1954
 Gibert Keith Chesterton Collection, 1874–1936
 Annie Christitch (Christic) Papers, 1885–1977
 Charlotte Louisa Hawkins Dempster Collection,
 1835–1913
 Eleanor Early Papers, 1895–1969
 Eire Society of Boston Archives
 Fatherless Children of France Memorial Volume
 Records, 1915–1921
 Eric Gill Collection
 David Goldstein Papers, 1870–1958
 Graham Greene Collection, 1904–
 Peter Levi Collection and Papers, 1931–
 Joseph McCarthy Papers, 1915–1980
 Thomas Merton Collection, 1915–1968
 Morrisey Collection of Japanese Prints, 18th–19th
 centuries
 Music Manuscripts of American Popular Songs,
 1900–1940
 Nonesuch Press Collection
 James Spencer Northcote Collection, 1821–1907
 Bruce Rogers Collection
 Salem, Massachusetts, First Church of Christ Library,
 (Including the library of John Prince, 1751–1836)
 Joseph Coolidge Shaw Collection, 1821–1851
 Edith Sitwell Collection, 1887–1964
 McNiff Collection of the Stanbrook Abbey Press
 Playbill Collection
 George Francis Trenholm Papers, 1886–1958
 Evelyn Waugh Collection, 1903–1966

**Special Nursing Collections
O'Neill Library****The Boston College Guild of St. Luke of
Boston Health Ethics Collection**

Initiated in 1974, this contains books, pamphlets, periodicals, reprints, and audio-visual materials which concern the ethics of medicine, nursing, and health care.

National Health Planning Information Center

O'Neill Library is one of the twenty-six United States and European depositories for NHPIC non-copy-righted materials in microfiche format. These cover a variety of topics relevant to health planning and resources with a strong nursing component. Consult reference librarians for additional information in regard to the scope and use of this collection.

Source: University Librarian

University Archives

Archives are the official non-current papers and records of an institution that are deemed worthy of permanent preservation for their legal, fiscal or historical values. The University Archives contain the office records and documents of the various University offices, academic and otherwise, copies of all University publications, including student publications, movie footage of Boston College football, some audio-visual materials, and tape recordings of the University Lecture Series and other significant events. A significant collection of photographs documents the pictorial history of Boston College. Alumni, faculty, and Jesuit records are also preserved. A museum houses various ephemera and memorabilia that accompany the documents. In addition, the Archives are the repository for the documents of Newton College of the Sacred Heart (1946–1975); The Jesuit Education Association (1934–1970); the Catholic International Education Office (1952–1976); and the documents of the Jesuit Community at Boston College (1863–). Location—The Burns Library

Source: University Librarian

The Language Laboratory

The Language Laboratory serves all of the language departments, and provides English for Foreign Students. In addition to its 70 state-of-the-art listening/recording stations and dual-teacher console, the facility includes video and film viewing rooms and three audio-interfaced microcomputers. The Laboratory's audio and videotape collection, computer software, and other audio-visual learning aids directly support and/or supplement the curriculum requirements in foreign language, literature and music.

Source: Language Laboratory.

Athletics

1. The first part of the document is a list of names of athletes who have participated in various sports events. The names are listed in alphabetical order and include the names of the athletes and their respective sports.

o





1422

BOSTON COLLEGE
1408

1416

John A. "Snooks" Kelley (1907–1986)

A Boston College Tradition

It seemed only fitting that on April 14, 1986 — the day that John A. "Snooks" Kelley's funeral Mass was celebrated in St. Ignatius Church — demolition work began in earnest on McHugh Forum, for 29 years the home of the Boston College ice hockey program.

"Snooks" Kelley, you see, was the father of that program. Not just the coach, or former player, or long-time observer; but the real "Father" to generations of student-athletes, alumni, faculty, friends and fans of this long-successful Boston College sport.

He was a hockey player himself in his undergraduate days at Boston College (1924–28) — seasons when practice was held on frozen ponds, and only a handful of schools had their own campus rinks.

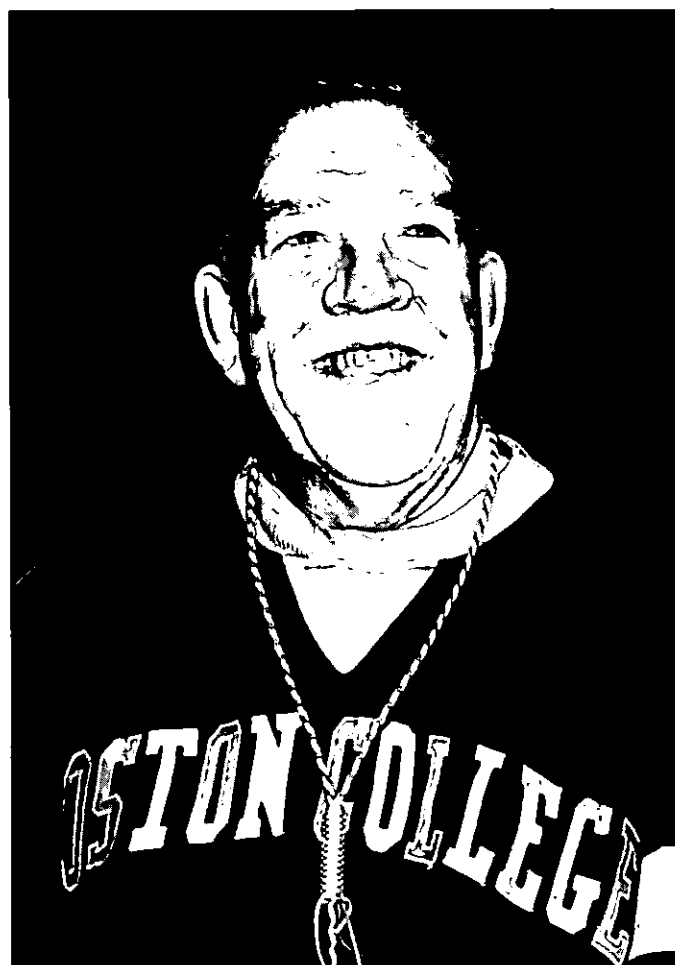
"Snooks" took over as head coach of Boston College's hockey program in 1932, sharing that avocation with his secondary school teaching position at Cambridge Rindge and Latin School. He served as the Eagles' head coach from that time until 1942, and, after military service, from 1946 until 1972.

In that span, he coached 501 victories against 243 defeats and 15 ties. He was the first ever collegiate coach to record 500 career victories, and was dubbed "Dean of American Hockey Coaches" until his retirement.

Included among his many accomplishments in those years were Boston College's only national sports championship (1949); eight New England championships and eight Beanpot crowns.

McHugh Forum itself was built during his era — opening its doors in 1958. It was a showcase of intercollegiate athletic facilities when completed, but like all things temporal, is being replaced now by a more modern and sparkling structure.

Even when his days behind the dasher were over, John A. Kelley continued to serve his beloved Alma Mater. For many years, he directed the University's



National Youth Sports Program, which gave recreational instruction and educational opportunities to thousands of inner-city children; and he will always be fondly remembered as Boston College's "Ambassador of Good Will," greeting students, parents, teachers and friends from his busy corner in the lobby of the rink he so loved.

His spirit and warmth touched every corner of the Boston College community. President J. Donald Monan, S.J. eloquently noted in his funeral eulogy: "While the record of John Kelley's accomplishments at Boston College is tangibly evident, his role in fashioning the spirit of the University is perhaps his most important contribution to his Alma Mater. To how many young men and women did he give a sense of determination and initiative in developing their talents; a sense of responsibility to the people they represent; a capacity to accept loss despite best efforts; a personal pride and confidence in their ability to succeed as peo-

ple? John had the rare gift of helping students believe in themselves because each of them meant so much to him."

A lobby in the soon-to-be-constructed Sports Center will carry John "Snooks" Kelley's name as an introduction to generations of future Eagles. But to those tens of thousands of members of the Boston College "family" whose lives he had touched in his 60-year association with the University, a bronze wall plaque will never be necessary.

The Year in Review 1985-1986

Sports Participation Levels

Sport	Men's	Women's
Varsity		
Baseball	25	-
Basketball	16	14
Cross Country	25	8
Fencing	-	8
Field Hockey	-	22
Football	115	-
Golf	13	9
Ice Hockey	29	-
Lacrosse	28	19
Sailing	15	15
Skiing	15	10
Soccer	26	22
Softball	-	18
Swimming/Diving	26	30
Tennis	10	13
Track — Indoor	30	40
Track — Outdoor	30	40
Volleyball	-	13
Wrestling	11	-
Total	414	281
Club Sports		
Ice Hockey	-	18
Rugby	24	-
Volleyball	12	-
Waterpolo	21	23
Total	57	41

Source: Sports Information Office

Intercollegiate Athletic Accomplishments

Football Team

Record fell to 4 - 8 and the Eagles missed a bowl bid for the first time since 1982. . . . however, All-American Mike Ruth was named winner of Outland Award as nation's best collegiate lineman at Meadowlands . . . seven televised games — two on national TV.

Men's Basketball

Coach Gary Williams resigned to accept a similar position at Ohio State . . . former BC star Jim O'Brien named as replacement . . . Dana Barros selected as "Rookie of Year" in BIG EAST . . . Captain Roger McCready became 16th BC player ever to score 1,000 points . . . 13-15 final record, but Eagles had big wins over St. Johns and Ohio State.

Men's Hockey

Team advanced to "Final Eight" of NCAA Championships . . . won regular season HOCKEY EAST Championship for second consecutive year . . . Scott Harlow set all-time BC scoring record and was finalist for Hobey Baker Award as nation's best college player . . . final record: 26-13-3.

Men's Track/Cross Country

John Clopek won BIG EAST individual cross country competition . . . weight thrower Jim Kenney won BIG EAST, qualified for NCAA's in both indoor and outdoor competition . . . he was named All-American and BIG EAST MVP as well.

Women's Track/Cross Country

Team won BIG EAST, New England and Greater Boston Cross Country Championships . . . 12th in NCAA championship . . . Michelle Hallet first BC woman ever to qualify for NCAA championship in 10,000 meter run.

Women's Field Hockey

Record 10-5-5 . . . The 1985 season brought the Eagles their first-ever national ranking (11th) in this sport . . . the team earned their consecutive invitation to the ECAC.

Men's Skiing

Second in New England, fourth in National championship (NCSA) . . . George Abdow was Eastern champion and All-America choice.

Women's Basketball

Fifth in BIG EAST (16-13 record) . . . Marie Grant scored 1,000 career points.

Women's Skiing

First in Easterns, third in Nationals (NCSA) . . . Amy Glackin and Brenda Cunningham selected to All-America team.

Women's Soccer

Finished seventh in nation, qualified for NCAA championship. Betsy Ready selected All American and Academic All-America.

Men's Swimming

8-3 record . . . fifth in BIG EAST . . . diver Geoff Geis qualified for NCAA championship and won award for most points scored in four years of New England championship competition.

Women's Swimming

8-2 season record . . . second in BIG EAST, first in ECAC . . . Tom Groden BIG EAST Coach of Year . . . Tara McKenna qualified for NCAAs and MVP of BIG EAST.

Men's Soccer

Record 8-9-3 (following 0-6-1 start) . . . team won four of last five games, including 1-0 victory over NCAA New England champion Boston University.

Men's Tennis

Won BIG EAST Championship for sixth time in seven years.

Women's Tennis

Second in BIG EAST . . . Katie Molumphy became first BC player ever to qualify for NCAA championship.

Men's Baseball

Final record 14-23 . . . three players named to Greater Boston All-Star team.

Men's Golf

Third in BIG EAST . . . Chris van der Velde became first BC golfer in many years to qualify for NCAA championship tournament.

Women's Volleyball

Improved record from 4-33 in 1984-85 to 11-27 this past year.

Varsity Sports Records

	1981-82 W-L-T	1982-83 W-L-T	1983-84 W-L-T	1984-85 W-L-T	1985-86 W-L-T
Men's Records					
Football	5-6	8-2-1	9-2	10-2	4-8
Basketball	22-10	25-7	18-12	20-11	13-15
Ice Hockey	19-11	15-13-2	26-13	28-15-2	26-13-3
Wrestling	9-7	9-6	9-6	8-8	8-12
Soccer	13-7-1	14-3-5	9-9-2	7-8-3	8-9-3
Lacrosse	5-9	6-10	6-8	6-8	2-14
Tennis	7-7	17-3	13-2	11-3	14-2
Baseball	13-12	11-9	7-17	12-22	14-23
Swimming	3-5	6-3	7-2	8-3	8-3
Golf	8-6	12-6	9-8	8-6	8-4
Women's Records					
Basketball	10-15	17-9	11-16	19-9	16-13
Field Hockey	6-9-1	5-10-1	9-8-2	13-4-1	10-5-5
Swimming	7-3	7-2	7-2	7-4	8-2
Tennis	3-3	10-4	12-3	13-4	10-3
Volleyball	13-22	12-18	7-20	4-33	11-27
Lacrosse	5-5-2	5-8-1	7-8	7-8	6-7
Soccer	8-4-1	10-2	15-5	12-6-1	13-5-1
Softball	-	-	5-6	19-11	17-16

Source: Sports Information Office

Varsity Football Schedules
1986

September 6	Rutgers
September 13	California
September 20	Penn State
October 4	at SMU
October 11	at Maryland
October 18	Louisville
October 25	at West Virginia
November 1	at Army
November 8	at Temple
November 15	Syracuse
November 22	at Holy Cross

1987

September 5	at USC
September 12	Temple
September 26	Penn State
October 3	at Pittsburgh
October 10	Army
October 17	at Rutgers
October 24	West Virginia
October 31	Tennessee
November 7	at Notre Dame
November 14	at Syracuse
November 21	Holy Cross

1988

September 3	USC
September 17	at Penn State
September 24	at Temple
October 1	Pittsburgh
October 8	Cincinnati
October 15	Rutgers
October 22	at West Virginia
October 29	at Army
November 5	at Tennessee
November 12	Syracuse
November 19	at Holy Cross

1989

September 9	Pittsburg
September 16	at Rutgers
September 23	at Penn State
September 30	at Ohio State
October 7	Southern Methodist
October 14	Temple
October 21	Navy
October 28	West Virginia
November 4	at Syracuse
November 11	at Army
November 18	Holy Cross

Source: Sports Information Office

Varsity Hockey Schedule* 1986-1987

October 24	at UNIVERSITY OF MAINE
October 25	at UNIVERSITY OF MAINE
October 29	NORTHEASTERN UNIVERSITY (at Boston University)
November 1	at NORTHEASTERN UNIVERSITY
November 5	at UNIVERSITY OF LOWELL
November 8	UNIVERSITY OF LOWELL (at Northeastern University)
November 10	at Holy Cross
November 15	Michigan Polytechnic (at Northeastern University)
November 16	Northern Michigan University (at Boston University)
November 18	PROVIDENCE COLLEGE (at Harvard University)
November 21	at PROVIDENCE COLLEGE
November 29	University of Minnesota (at Boston University)
December 2	BOSTON UNIVERSITY (at Boston Garden)
December 6	at BOSTON UNIVERSITY
December 10	at UNIVERSITY OF NEW HAMPSHIRE
December 13	UNIVERSITY OF NEW HAMPSHIRE (at Harvard University)
January 2	at University of North Dakota
January 4	at University of Wisconsin
January 9	at University of Denver
January 10	at Colorado College
January 16	Minnesota-Duluth (at Harvard University)
January 20	BOSTON UNIVERSITY (at Boston Garden)
January 23	at BOSTON UNIVERSITY
January 28	UNIVERSITY OF LOWELL (at Northeastern University)
January 30	at UNIVERSITY OF LOWELL
February 2	Beanpot Tourney (at Boston Garden)
February 9	Beanpot Tourney (at Boston Garden)
February 13	UNIVERSITY OF MAINE (at Boston University)
February 14	UNIVERSITY OF MAINE (at Boston University)
February 18	UNIVERSITY OF NEW HAMPSHIRE (at Boston University)
February 21	at UNIVERSITY OF NEW HAMPSHIRE
February 23	NORTHEASTERN UNIVERSITY (at Boston University)
February 26	at NORTHEASTERN UNIVERSITY
March 1	at PROVIDENCE COLLEGE
March 7	PROVIDENCE COLLEGE (at Boston University)

*Hockey East games in caps
Home games in bold
Source: Sports Information Office

Varsity Basketball Schedule* 1986-1987

November 12	Melbourne (exhibition)
November 28	Siena
December 1	at University of New Hampshire
December 4	Harvard University
December 6	at Fairfield
December 8	Utica College
December 11	University of Maine
December 14	at Holy Cross
December 18	at Japan Bowl vs Southern Methodist University, Osaka, Japan
December 20	at Japan Bowl vs Georgia Polytechnic, Tokyo, Japan
December 30	Lafayette
January 6	VILLANOVA
January 10	at ST. JOHN'S
January 13	SYRACUSE
January 17	at Providence
January 20	at SETON HALL
January 24	PITTSBURGH
January 27	CONNECTICUT
January 30	at VILLANOVA
February 1	SETON HALL
February 3	PROVIDENCE
February 6	ST. JOHN'S
February 9	at GEORGETOWN
February 14	at Pittsburgh
February 16	North Carolina-Wilmington
February 24	GEORGETOWN
February 26	at CONNECTICUT
February 28	at SYRACUSE

*Home games in bold
Big East games in caps
Source: Sports Information Office

General Information



Founder of Boston College

Rev. John McElroy, S.J.
Pastor, Immaculate Conception Parish, Boston
1861–1863

Presidents of Boston College

1. John Bapst, S.J.	1863–1869
2. Robert W. Brady, S.J.	1869–1870
3. Robert Fulton, S.J.	1870–1880
4. Jeremiah O'Connor, S.J.	1880–1884
5. Edward V. Boursaud, S.J.	1884–1887
6. Thomas H. Stack, S.J.	1887
7. Nicholas Russo, S.J.	1887–1888
8. Robert Fulton, S.J.	1888–1891
9. Edward I. Devitt, S.J.	1891–1894
10. Timothy Brosnahan, S.J.	1894–1898
11. W. G. Read Mullan, S.J.	1898–1903
12. William F. Gannon, S.J.	1903–1907
13. Thomas I. Gasson, S.J.	1907–1914
14. Charles W. Lyons, S.J.	1914–1919
15. William Devlin, S.J.	1919–1925
16. James H. Dolan, S.J.	1925–1932
17. Louis J. Gallagher, S.J.	1932–1937
18. William J. McGarry, S.J.	1937–1939
19. William J. Murphy, S.J.	1939–1945
20. William L. Keleher, S.J.	1945–1951
21. Joseph R. N. Maxwell, S.J.	1951–1958
22. Michael P. Walsh, S.J.	1958–1968
23. W. Seavey Joyce, S.J.	1968–1972
24. J. Donald Monan, S.J.	1972–

Source: Secretary of the University

Honorary Degrees Awarded by Boston College 1952-1986

1952

Gregory Peter XV Cardinal Agagianian, LL.D. (January 14, 1952)
James B. Connolly, Litt.D.
James M. O'Neill, LL.D.
Most Rev. Thomas F. Markham, LL.D.*
Rt. Rev. Thomas J. Riley, LL.D.
James J. Ronan, LL.D.

1953

Dorothy L. Book, LL.D.
Most Rev. James L. Connolly, LL.D.
Clifford J. Laube, LL.D.
Francis J. O'Halloran, A.M.
Most Rev. Leonard J. Raymond, LL.D.*
Alex Ross, A.M.
John C. H. Wu, LL.D.

1954

Edward H. Chamberlin, LL.D.
John J. Hearne, LL.D.*
James W. Manary, Sc.D.
Thomas A. Printon, LL.D.
Ven. Bro. William Sheehan, C.F.X., LL.D.
Most Rev. Christopher J. Weldon, LL.D.
Louis de Wohl, Litt.D.
William J. O'Keefe, LL.D. (November 21, 1954)

1955

Fred J. Driscoll, LL.D.
Christian A. Herter, LL.D.
Edward A. Hogan, Jr., LL.D.*
Rear Adm. Bartholomew W. Hogan, Sc.D.
John B. Hynes, LL.D.
His Beatitude Maximos IV, LL.D. (August 23, 1955)
Valerian Cardinal Gracias, LL.D.
Russel Kirk, Litt. D.
Edward A. Sullivan, LL.D.

1956

Bartholomew A. Brickley, LL.D.
Peter J. W. Debye, Sc.D.
Most Rev. Frederick A. Donaghy, LL.D.
John F. Kennedy, LL.D.*
John W. King, LL.D.
Charles Munch, D.Mus.
Edward F. Williams, LL.D.

*Commencement Speaker

1957

Wallace E. Carroll, LL.D.
Arthur J. Kelly, LL.D.
Augustus C. Long, LL.D.*
Adrian O'Keefe, LL.D.
Very Rev. Msgr. Patrick W. Skehan, LL.D.
Nils Y. Wessell, LL.D.

1958

Most Rev. Amleto G. Cicognani, LL.D. (April 21, 1958)
Carl J. Gilbert, LL.D.
Paul Horgan, Litt.D.
Barnaby C. Keeney, LL.D.*
Henry M. Leen, LL.D.
Jacques Maritain, LL.D.
Raissa Maritain, LL.D.
Harold Marston Morse, D.Sc.
Rev. John B. Sheerin, C.S.P., LL.D.
Francis Cardinal Spellman, LL.D. (December 8, 1958)

1959

His Excellency Sean T. O'Kelly, LL.D. (March 22, 1959)
Ernest Henderson, LL.D.
Rev. John LaFarge, S.J., LL.D.
Henry Cabot Lodge, LL.D.
George Meany, LL.D.
Carlos P. Romulo, LL.D.*
Helen C. White, Litt.D.

1960

Marian Anderson, D.Mus.
J. Peter Grace, LL.D.
Caryl P. Haskins, LL.D.
Robert F. Kennedy, LL.D.
Charles Malik, LL.D.*
Most Rev. Russell J. McVinnay, LL.D.
Samuel Eliot Morison, LL.D.
Rt. Rev. Matthew P. Stapleton, LL.D.
Rev. Henry M. Brock, S.J., D.Sc. (October 12, 1960)

1961

Allen W. Dulles, LL.D.
Anthony Julian, LL.D.
Robert D. Murphy, LL.D.*
Louis R. Perini, LL.D.
Abraham Ribicoff, LL.D.
Rt. Rev. Robert J. Sennott, LL.D.
Edward Teller, LL.D.

1962

Detlev W. Bronk, D.Sc.*
Ralph J. Bunche, LL.D.
Christopher J. Duncan, M.D., LL.D.
Sir Alec Guinness, D.F.A.
Rt. Rev. Francis J. Lally, Litt.D.
Ralph Lowell, LL.D.
Phyllis McGinley, Litt.D.
Perry G. Miller, Litt.D.

1963

Augustin Cardinal Bea, S.J., J.U.D. (March 26, 1963)
Rev. Edward B. Bunn, S.J., LL.D. (April 20, 1963)
Lady Barbara Ward Jackson, Litt.D. (April 20, 1963)
Nathan Marsh Pusey, L.H.D. (April 20, 1963)
Bruce Catton, Litt.D.
Anthony Joseph Celebrezze, LL.D.*
Arthur Joseph Goldberg, LL.D.
John Jay McCloy, LL.D.
James Barrett Reston, LL.D.
Rt. Rev. John Joseph Ryan, L.H.D.
Jose Luis Sert, Litt.D.
Joseph Leo Sweeney, LL.D.
Robert Clifton Weaver, LL.D.
James Edwin Webb, D.Sc.

1964

John Coleman Bennett, LL.D.
Henri Maurice Peyre, LL.D.
Most Rev. Ernest John Primeau, LL.D.
Sidney R. Rabb, L.H.D.
Paul Anthony Samuelson, LL.D.
Rev. Joseph L. Shea, S.J., LL.D.
Robert Sargent Shriver, Jr., LL.D.*
Mary Sullivan Stanton, LL.D.

1965

John P. Birmingham, LL.D.
Robert McAfee Brown, LL.D.
J. N. Douglas Bush, Litt.D.
Victor L. Butterfield, L.H.D.
John T. Connor, LL.D.
Edith Green, LL.D.
Rev. John Courtney Murray, S.J., L.H.D.*
Rt. Rev. Lawrence J. Riley, LL.D.
Alan T. Waterman, D.Sc.

1966

Most Rev. John W. Comber, M.M., L.H.D.
 Edward F. Gilday, L.H.D.
 Edward M. Kennedy, LL.D.
 Francis Keppel, LL.D.*
 Mother Eleanor M. O'Byrne, R.S.C.J., LL.D.
 Stephen P. Mugar, LL.D.
 Abram L. Sachar, L.H.D.
 Rene Wellek, Litt.D.
 George Wells Beadle, D.Sc. (November 12, 1966)
 William Bosworth Castle, M.D., L.H.D.
 (November 12, 1966)
 Donald Frederick Hornig, LL.D. (November 12, 1966)
 James Alfred Van Allen, D.Sc. (November 12, 1966)

1967

Sarah Caldwell, Litt.D.
 Richard Palmer Chapman, LL.D.
 Very Rev. John Francis Fitzgerald, C.S.P., L.H.D.
 John Kenneth Galbraith, LL.D.
 John William Gardner, LL.D.*
 Everett Cherrington Hughes, LL.D.
 John Anthony Volpe, LL.D.

1968

Kingman Brewster, Jr., LL.D.*
 Rev. Henri de Lubac, S.J., L.H.D.
 Erwin N. Griswold, LL.D.
 Rita P. Kelleher, D.Sc.
 Most Rev. John J. McEleney, S.J., LL.D.
 Cornelius W. Owens, LL.D.
 James J. Shea, Sr., LL.D.
 Roger J. Traynor, LL.D.

1969

R. Buckminster Fuller, D.F.A.*
 Katharine Graham, D.Journ.
 Philip J. McNiff, L.H.D.
 Talcott Parsons, D.S.S.
 A. Philip Randolph, LL.D.
 Henry Lee Shattuck, D.C.S.
 Terence Cardinal Cooke, LL.D.

1970

James Edward Allen, Jr., D.Sc.Ed.
 Rt. Rev. John Melville Burgess, LL.D.
 Joan Ganz Cooney, D.Sc.Ed.
 Sterling Dow, L.H.D.
 Hartford Nelson Gunn, Jr., L.H.D.

*Commencement Speaker

Rev. Bernard Joseph Francis Loneragan, S.J.,
 Hist.Phil.D.
 Elliot Norton, L.H.D.
 Perry Townsend Rathbone, D.F.A.
 Earl Warren, D.Sc.L.*

1971

Walter Jackson Bate, H.D.
 Andrew Felton Brimmer, S.S.D.
 Rev. Msgr. George William Casey, Litt.D.
 Mircea Eliade, R.D.
 Eli Goldston, LL.D.
 Elma Lewis, D.F.A.
 Michael Joseph Mansfield, LL.D.*
 William James McGill, S.S.D.
 Most Rev. Humberto Sousa Medeiros, S.T.D.
 Walter George Muelder, D.Sc.T.
 Leverett Saltonstall, LL.D.

1972

Mary Ingraham Bunting, D.Sc.
 Arthur Fiedler, D.Mus.
 Northrop Frye, L.H.D.
 John James Griffin, D.C.S.
 Sir William Arthur Lewis, L.H.D.
 Louis Martin Lyons, D.Journ.
 Rev. John Anthony McCarthy, S.J. Litt.D.
 Hildegard Elizabeth Peplau, D.N.S.
 Adlai Ewing Stevenson, III, LL.D.*
 Walter Edward Washington, LL.D.

1973

A. J. Antoon, L.H.D.
 Harold Bloom, L.H.D.
 Fred J. Borch, D.B.A.
 Vernon E. Jordan, Jr., LL.D.
 John George Kemeny, D.Sc.*
 Rev. Daniel Linehan, S.J., D.Sc.
 Thomas Philip O'Neill, Jr., LL.D.

1974

Soia Mentschikoff, LL.D.*
 Thomas L. Phillips, D.B.A.
 Carl Thomas Rowan, L.H.D.
 Thomas Paul Salmon, LL.D.
 Sir Ronald Syme, L.H.D.
 Henry Bradford Washburn, Jr., L.H.D.

1975

Melnea A. Cass, L.H.D.
 Silvio O. Conte, LL.D.
 John Thomas Dunlop, LL.D.
 Rev. Francis J. Gilday, S.J., L.H.D.
 Edward Lewis Hirsh, L.H.D.
 Paul Ricoeur, L.H.D.*
 Vincent Charles Ziegler, D.B.A.†

Bicentennial Convocation**Sept. 28, 1975**

Thomas Joseph Galligan, Jr., D.B.A.
 Oscar Handlin, L.H.D.
 William J. Harrington, M.D. D.Sc.
 Edward Hirsh Levi, LL.D.
 Rev. Michael Patrick Walsh, S.J., L.H.D.
 Mary Lou Williams, D.A.

1976

Abram Thurlow Collier, D.B.A.
 John Hope Franklin, L.H.D.
 Rev. Martin Patrick Harney, S.J., H.D.
 Mildred Fay Jefferson, M.D., D.Sc.
 Asa Smallidge Knowles, D.Sc.Ed.
 Joseph Francis Maguire, LL.D.
 Daniel Patrick Moynihan, LL.D.*

1977

Rev. Raymond Edward Brown, Litt.D.*
 Gerhard D. Bleicken, LL.D.
 Alice Bourneuf, D.Sc.
 James F. McDonough, M.D., D.Sc.
 Maria Tallchief Paschen, D.A.
 Michael Joseph Walsh, Litt.D.

1978

Bruno Bettelheim, Litt.D.
 Rev. Charles F. Donovan, S.J., L.H.D.
 Charles D. Ferris, LL.D.*
 Marvin E. Frankel, LL.D.
 John William McDevitt, LL.D.
 Leo Perlis, D.S.S.

1979

Dorothy Baker, D.S.S.
 Edward Patrick Boland, LL.D.
 George P. Donaldson, LL.D.
 Richard Ellmann, L.H.D.
 Robben W. Fleming, L.H.D.
 Walter F. Mondale, LL.D.*
 David S. Nelson, LL.D.*

1980

Germaine Bree, Litt.D.*
 Albert M. Folkard, L.H.D.
 Edward J. King, D. Pub. Admn.
 Joseph Cardinal Malula, LL.D.
 Bernard J. O'Keefe, D.E.Sc.
 Kevin H. White, LL.D.

1981

Tomás Cardinal Ó Fiaich, Litt.D. (October, 1981)
 Rev. Joseph Delphis Gauthier, S.J., L.H.D.
 Margaret M. Heckler, LL.D.
 Rose Fitzgerald Kennedy, L.H.D.
 Donald F. McHenry, LL.D.
 Joseph Harry Silverstein, D.A.
 Paul Donovan Sullivan, D.S.S.
 Thomas P. O'Neill, Jr., The Ignatius Medal*

1982

Rev. Robert I. Burns, S.J., L.H.D.
 George Bush, LL.D.*
 Robert A. Charpie, D.Sc.
 Josephine L. Taylor, D.Sc.Ed.

1983

Maya Angelou, L.H.D.
 Virginia A. Henderson, D.N.S.
 Joseph McKenney, D.Ed.
 Vincent T. O'Keefe, S.J., L.H.D. (March, 1983)
 Bruce J. Ritter, O.F.M., D.S.S.*
 An Wang, LL.D.

1984

Leon Higginbotham, LL.D.
 Richard Hill, D.B.A.
 Most Rev. Bernard F. Law, S.T.D.*
 Robert Merrifield, D.Sc.
 Muriel Sutherland Snowden, D.S.S.
 Otto Phillip Snowden, D.S.S.

1985

Rev. Frederick Joseph Adelman, S.J., L.H.D.
 Lena Frances Edwards, D.Sc.
 Rev. J. Bryan Hehir, LL.D.
 Agnes Mongan, D.F.A.
 Anthony John Francis O'Reilly, D.B.A. (March, 1985)
 Andrew J. Young, LL.D.*
 Edward Zigler, L.H.D.

1986

Guido Calabresi, LL.D.
 Jacques d'Ambrose, D.F.A.
 Annie Dillard, L.H.D.
 Lionel B. Richie, Jr., D.Mus.
 Francis C. Rooney, Jr., D.B.A.
 Jaime Cardinal Sin, S.T.D.*

*Commencement Speaker
 Source: Secretary of the University

Types of Degrees Conferred at Boston College

Bachelor of Arts (A.B.)
 Bachelor of Science (B.S.)
 Master of Arts (M.A.)
 Master of Arts in Teaching (M.A.T.)
 Master of Business Administration (M.B.A.)
 Master of Education (M.Ed.)
 Master of Science (M.S.)
 Master of Science in Teaching (M.S.T.)
 Master of Social Work (M.S.W.)
 Certificate of Advanced Educational Specialization (C.A.E.S.)
 Doctor of Philosophy (Ph.D.)
 Doctor of Law (J.D.)
 Doctor of Education (D.Ed.)
 Doctor of Social Work (D.S.W.)

Honorary Degrees Granted by Boston College

D.A.	Doctor of Arts
D.B.A.	Doctor of Business Administration
D.C.S.	Doctor of Commercial Science
D.E.Sc.	Doctor of Engineering Science
D.F.A.	Doctor of Fine Arts
D.Journ.	Doctor of Journalism
D.Mus.	Doctor of Music
D.N.S.	Doctor of Nursing Science
D.Pub.Adm.	Doctor of Public Administration
D.Sc.	Doctor of Science
D.Sc.Ed.	Doctor of Science in Education
D.Sc.L.	Doctor of the Science of Law
D.Sc.T.	Doctor of the Science of Theology
D.S.S.	Doctor of Social Science
H.D.	Doctor of History
Hist.Phil.D.	Doctor of History in Philosophy
J.U.D.	Doctor of Civil and Canon Laws
L.H.D.	Doctor of Humane Letters
LL.D.	Doctor of Laws
Litt.D.	Doctor of Letters, Doctor of Literature
R.D.	Doctor of Religion
S.T.D.	Doctor of Sacred Theology
Sc.D.	Doctor of Science

Source: Commencement Programs, 1952-1986

Association Memberships*

American Association of Colleges of Nursing
American Association of College Registrars and Admissions Officers
American Association of Colleges for Teacher Education
American Association of Comparative Law
American Association for Higher Education
American Association of University Women
American Council on Education
American Educational Research Association
American Public Welfare Association
Association of American Colleges
Association of Catholic Colleges and Universities
Association of Collegiate Schools of Planning
Association for Continuing Higher Education
Association of Independent Colleges and Universities in Massachusetts
Association for Institutional Research
Association of Jesuit Colleges and Universities
Association of Urban Universities
Boston Library Consortium
Boston Theological Institute
The College Board
Council for Advancement and Support of Education
Council for Exceptional Children
Council of Graduate Schools in the United States
International Association of Schools of Social Work
International Association of Universities
International Federation of Catholic Universities
Jesuit Student Personnel Association
National Association of College Admissions Counselors
National Association of College and University Business Officers
National Association of Independent Colleges and Universities
National Association of Student Financial Aid Administrators
National Association of Student Personnel Administrators
National Association of Catholic Charities
New England Organization for Nursing
American Association of Schools of Social Work
National Conference of Social Welfare
National League for Nursing

New England Educational Research Organization
North American Association of Summer Sessions
Northeastern Association of Graduate Schools
Alpha Sigma Nu**
Order of the Coif**
Phi Beta Kappa**

*The above listing is meant only to be representative of the major types of memberships to which the University belongs.
**A complete listing of honor societies to which the University belongs may be found in the University Student Guide.
Source: Deans' Offices

Accrediting Agencies

American Assembly of Collegiate Schools of Business
American Bar Association
American Chemical Society
American Psychological Association
Association of American Law Schools
Council on Social Work Education
Interstate Certification Compact
National Council of Accreditation of Teacher Education
National League for Nursing
New England Association of Schools and Colleges

Academic Department Locations

Accounting Department	Fulton 400
Administrative Sciences Department	Fulton 214
Arts and Sciences	Gasson 103
Biology Department	Higgins 321
Chemistry Department	Devlin 223
Classical Studies Department	Carney 122
Computer Sciences Department	Fulton 423
Counseling Psychology	McGuinn 304
Counselors:	
Arts and Sciences	Gasson 108
Education	Campion 301
Management	Fulton 201
Nursing	Campion 301
Economics Department	Carney 131
Education	Campion 103-104A
Educational Foundations Program	Campion 310
English Department	Carney 445
Evening College	Fulton 314
Finance Department	Fulton 310
Fine Arts Department	Barry Pavilion 216, Newton Campus
General Management Program	Fulton 306
Geology and Geophysics Department	Devlin 209
Germanic Studies Department	Carney 320
Graduate Arts and Sciences	McGuinn 221
History Department	Carney 115
Honors Program:	
Arts and Sciences	Gasson 111
Education	Campion 104A
Management	Fulton 301
Instructional Leadership and Administrator Program	McGuinn 600
Language Laboratory	Lyons 313
Law School	Stuart Hall, Newton Campus
Law Department	Fulton 403
Management Center	Fulton 201A
Marketing Department	Fulton 301
Mathematics Department	Carney 318
Music Program	St. Mary's House, Newton Campus
Nursing	Cushing 210
Organizational Studies Program	Fulton 214
Philosophy Department	Carney 251
Physics Department	Higgins 355
Political Science Department	McGuinn 201
Psychology Department	McGuinn 301
Religious Education and Pastoral Ministry, Institute of	31 Lawrence Avenue
Romance Languages and Literatures Department	Lyons 304
Slavic and Eastern Languages Department	Carney 235
Social Work Graduate School	McGuinn 131
Sociology Department	McGuinn 426
Special Education and Rehabilitation Program	McGuinn B29
Speech Communication and Theater	Lyons L215
Summer Session	Fulton 314
Theology Department	Carney 418

Academic Calendar 1986-1987**First Semester**

August 30-September 2	Saturday-Tuesday: Freshman and Transfer Orientation
September 2	Tuesday: Registration for students not pre-registered
September 3	Wednesday: Classes begin
September 3	Wednesday: Faculty Convocation
October 13	Monday: Celebration of Columbus Day — No classes
November 11	Tuesday: Veterans Day — No classes
November 26-28	Wednesday-Friday: Thanksgiving holidays
December 10-11	Wednesday and Thursday: Study Days — No classes for undergraduate day students
December 12-19	Friday-Friday noon: Term examinations

Second Semester

January 12-13	Monday-Tuesday: Freshman and Transfer Orientation
January 13	Tuesday: Registration for students not pre-registered
January 14	Wednesday: Classes begin
January 19	Monday: Celebration of Martin Luther King Day — No classes
February 16	Monday: Celebration of Washington's Birthday — No classes
March 2-6	Monday-Friday: Spring vacation
April 17-20	Good Friday-Easter Monday: Easter Recess
April 28-29	Tuesday and Wednesday: Study Days — No classes for undergraduate day students
April 30-May 7	Thursday-Thursday noon: Term Examinations
May 18	Monday: Commencement

1987-1988**First Semester**

August 29-September 1	Saturday-Tuesday: Freshman and Transfer Orientation and Advisement
September 1	Tuesday: Registration for students not pre-registered
September 2	Wednesday: Classes begin
September 2	Wednesday: Faculty Convocation
September 7	Monday: Labor Day — No classes
October 12	Monday: Columbus Day — No classes
November 11	Wednesday: Veterans Day — No classes
November 25-27	Wednesday-Friday: Thanksgiving holidays
December 10 and 11	Thursday and Friday: Study Days — No classes for undergraduate day students
December 12-19	Saturday-Saturday noon: Term examinations

Second Semester

January 17-18	Sunday-Monday: Freshman and Transfer Orientation and Advisement
January 18	Monday: Registration for students not pre-registered
January 19	Tuesday: Classes begin
February 15	Monday: Celebration of Washington's Birthday — No classes
February 29-March 4	Monday-Friday: Spring vacation
April 1-4	Good Friday-Easter Monday: Easter Recess
April 18	Monday: Celebration of Patriot's Day — No classes
May 3-4	Tuesday and Wednesday: Study Days — No classes for undergraduate day students
May 5-12	Thursday-Thursday noon: Term Examinations
May 23	Monday: Commencement

Source: Office of the Academic Vice President

Sources

Academic Vice President
 Admissions
 Alumni Association
 Buildings and Grounds
 Bureau of Conferences
 Controller's Office
 Deans' Offices
 Development Office
 Dining Department
 Financial Aid Office
 Office of Financial Vice President and Treasurer
 Health Services Office
 Housing Office
 Human Resources Office
 Policies and Procedures Office
 President's Office
 Registrar
 Research Administration
 Secretary of the University
 Space Management
 Sports Information Office
 Office of Student Programs and Resources
 Summer Session Office
 University Archivist
 University Counseling Services
 University Librarian
 Information Services, University Relations

N.B. Sources are responsible for the accuracy and completeness of data submitted for publication.
 Photos by Lee Pellegrini, except where noted

Fact Book Index

- Academic Calendars, 92
 Academic Deans, 12
 Academic Department Locations, 91
 Accrediting Agencies, 90
 Administration and Faculty, 7-19
 Administrators, University, 13
 Alumni, 43-50
 Alumni Association Board of Directors, 44
 Alumni Awards, 44
 Alumni by Primary School, Sex and Class, 46-47
 Alumni Clubs, 44
 Alumni Donors by Primary School and Class, 48-49
 Alumni, Comparative Regional Analysis, 45
 Alumni, Geographic Analysis by State, 45
 Applications, Acceptances and Enrollment, Freshmen, 22
 Applications, Acceptances and Enrollment, Transfer Students, 24
 Archives, 75
 Association Memberships, 90
 Athletics, 77-83
- Board of Trustee Membership, 9
 Boston College Profile, 5
 Boston College Properties, 56
 Boston College, A Brief History, 3
 Building Use, Summary, 59
 Buildings, Boston College, 54-55
 Buildings and Grounds (See Physical Plant)
- Campus Maps, 94-95
 Chairmen and Chairwomen, Department, 12
 Chart of Administration, 8
 Classrooms, 59
 Contract and Grant Awards, 66-68
 Counseling Services, 41
- Deans, Academic, 12
 Degrees Conferred at Boston College, Types, 89
 Degrees Conferred, Undergraduate, 35-37
 Degrees Conferred, Undergraduate and Graduate, 38
 Department Chairmen and Chairwomen, 12
 Development Office Annual Report, 50
 Dining Facilities, 58
 Donors by Giving Club, 50
 Dormitories (See Residence Halls)
- Enrollment, Evening College, 30
 Enrollment, Full-Time Equivalent, 29
 Enrollment, Full-Time Freshmen by Year and Sex, 22
 Enrollment, Graduate and Undergraduate, Full- and Part-Time, 25
 Enrollment, Graduate by School, 26
 Enrollment, Graduate, by Degree Program and Discipline, 27
 Enrollment, Minority Students, 34
 Enrollment, Summer Session, 29
 Enrollment, Transfer Students, 24
 Enrollment, Transfer Students by Previous Institution and Sex, 24
 Enrollment, Undergraduate and Graduate by Sex, 28
 Enrollment, Undergraduate by School, 26
 Enrollment, Undergraduate Day and Evening and Graduate, 25
 Enrollment, Veterans, 34
 Evening College Enrollment, 30
- Facility Capacities, 57
 Faculty, Administration and, 7-19
 Faculty, Average Compensation by Rank, 19
 Faculty, by Highest Earned Degree and Rank, 17
 Faculty, by Highest Earned Degree and Sex, 17
 Faculty, by Rank and Sex, 17
 Faculty, by School and Rank, 15
 Faculty, by School and Sex, 16
 Faculty, by School and Tenure Status, 16
 Faculty, Full-Time Equivalent by School, 15
 Faculty, Full-Time, Graduate Assistants, Teaching Fellows, 18
 Finance, 63-69
 Financial Aid, Undergraduate and Graduate, 39
 Financial Operations, Highlights, 64
 Foreign Student and Scholar Statistics, 32
 Foreword, 1
 Founder of Boston College, 86
 Freshmen Applications, Acceptances and Enrollment, 22
 Freshmen Enrollees, SAT Averages by Class, 22
 Freshmen, Full-Time, Enrollment by Year and Sex, 22
 Freshmen, Geographic Distribution, 23
 Full-Time Equivalent Enrollment, 29
- General Information, 85-92
 Geographic Distribution of Students, Graduate and Undergraduate, 31
 Geographic Distribution, Freshmen, 23
 Gifts to the University, 50
 Graduate Assistants, Teaching Fellows, Full-Time Faculty, 18
 Graduate Enrollment by Degree Program and Discipline, 27
 Graduate Enrollment by School, 26
 Graduate Enrollment by Sex, 28
 Graduate Enrollment, Full- and Part-Time, 25
- Health Services, 40
 History, Boston College, 3
 Honorary Degrees Awarded, 87-89
 Honorary Degrees Granted, 89
- Infirmary, 40
 International Student and Scholar Statistics, 32
- Language Laboratory, 75
 Libraries, 70-75
 Library Circulation Statistics, 72
 Library Expenditures, 74
 Library Holdings, 74
 Library Special Collections, 76
- Maps, Campus, 94-95
 Minority Student Enrollment, 34
- Officers of the University, 11
 Offices, 58
 Organization Chart, Administration, 8
- Personnel, Professional, Administrative and Support Staff, 14
 Physical Plant, 53-61
 Presidents of Boston College, 86
 Professional, Administrative, and Support Staff Personnel, 14
 Profile, Boston College, 5
 Properties, Boston College, 56
- Residence Hall Capacities, 60
- SAT Averages by Class, Freshmen Enrollees, 22
 Sources of Fact Book Information, 92
 Special Collections, 74
 Sports Participation Levels, 79
 Sports Records, 81
 Sports Schedules, 82-83
 Students, 21-41
 Summer Session Enrollment, 29
- Teaching Fellows, Full-Time Faculty, Graduate Assistants, 18
 Transfer Students, Applications, Acceptances and Enrollment, 24
 Transfer Students, Enrollment by Previous Institution And Sex, 24
 Trustee Associate Membership, 10
 Trustee Membership, Board of, 9
 Trustees of Boston College, 8
 Tuition and Fees, 65
- Undergraduate and Graduate Degrees Conferred, 38
 Undergraduate and Graduate Financial Aid, 39
 Undergraduate Degrees Conferred, 35-37
 Undergraduate Enrollment by School, 26
 Undergraduate Enrollment by Sex, 28
 Undergraduate Enrollment, Full- and Part-time, 25
 University Administrators, 13
 University Archives, 75
 University Counseling Services, 41
- Veterans Enrolled at Boston College, 34



BOSTON COLLEGE
CHESTNUT HILL CAMPUS

