

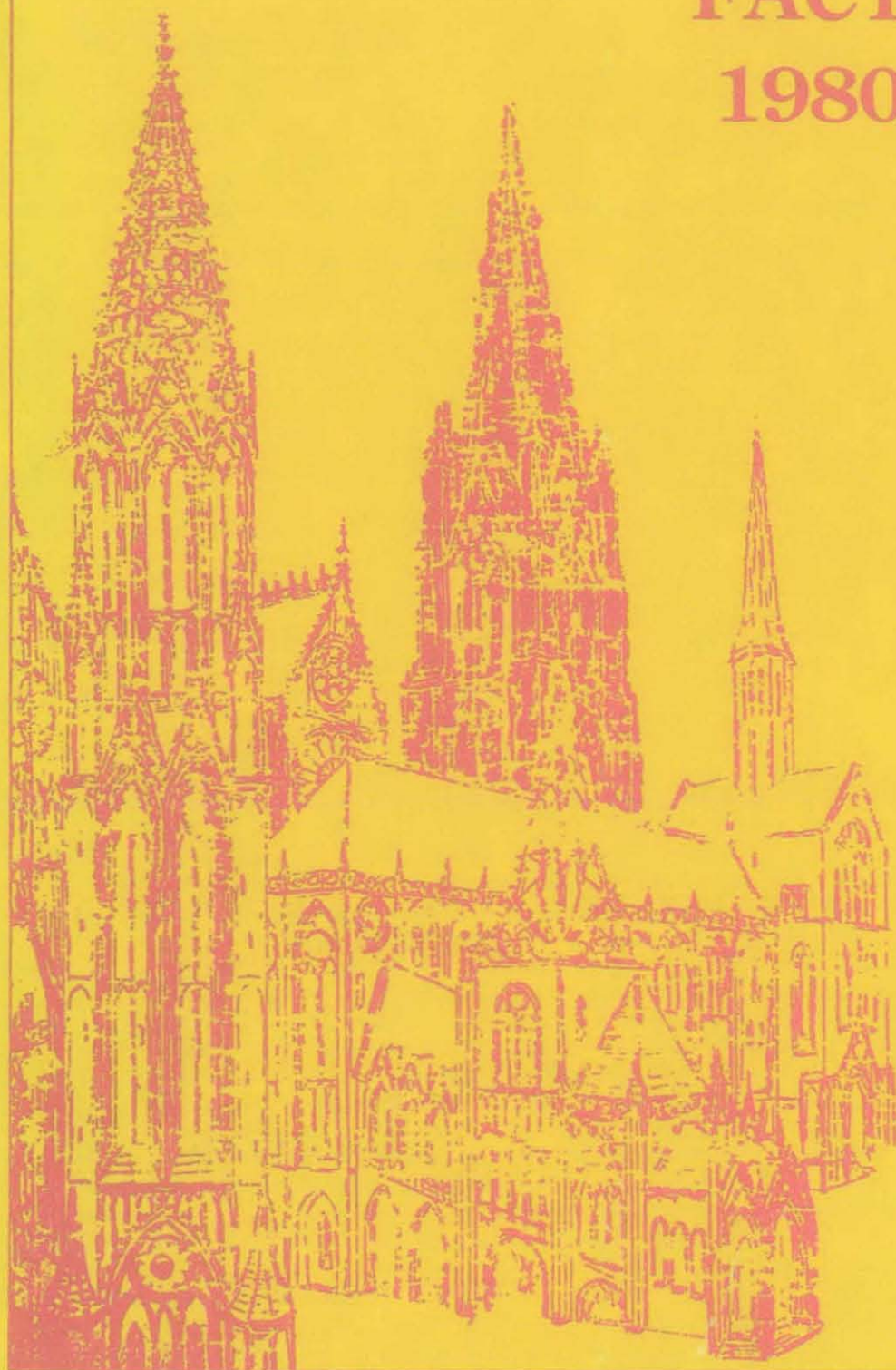
G. Nash 57

12/14/81

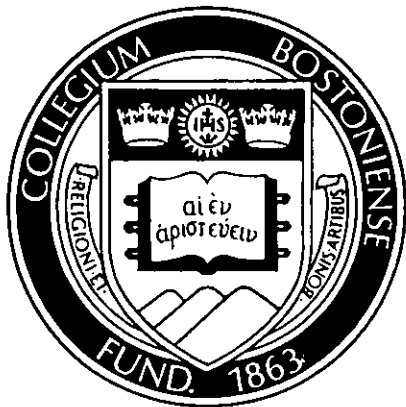
# Boston College

## FACT BOOK

1980 - 1981



**Boston College**  
**FACT BOOK**  
**1980 - 1981**



**BOSTON COLLEGE FACT BOOK  
TABLE OF CONTENTS**

	Page
Foreword .....	v
Boston College — A Brief History .....	vii
Boston College Profile .....	viii
<b>I. ADMINISTRATION AND FACULTY</b>	
Chart of Administration .....	3
Board of Trustees .....	4
Officers of the University .....	6
Academic Deans .....	6
University Administrators .....	7
Department Chairmen and Chairwomen .....	8
Professional, Administrative and Support Staff Personnel .....	9
Faculty:	
— by School and Rank .....	10
— Full-Time Equivalent by School .....	10
— by School and Tenure Status .....	11
— by School and Sex .....	11
— by Highest Earned Degree and Rank .....	12
— by Highest Earned Degree and Sex .....	12
— by Rank and Sex .....	12
Full-Time Faculty, Graduate Assistants, Teaching Fellows:	
— by School and Department .....	13
Average Faculty Compensation: .....	14
— by Rank, AAUP Category I, 1980-81 .....	14
— Boston College Faculty — For Five Years Ended June 30, 1981 .....	14
<b>II. STUDENTS</b>	
Freshman Enrollment by Year and Sex (Full-Time) .....	16
Freshman Enrollees — SAT Average by Class .....	16
Freshman Applications, Acceptances and Enrollment (Full-Time) .....	16
Class of 1985 Applications and Enrollees — Geographic Distribution .....	17
Enrollment 1980-81:	
— Undergraduate Transfer Students by Type of Previous Institution and Sex .....	17
— Graduate and Undergraduate, Full- and Part-Time .....	18
— Undergraduate, Day and Evening, and Graduate .....	18
— Undergraduate, by School .....	19
— Graduate, by School .....	19
— Graduate, by Degree Program and Discipline .....	20
— Undergraduate and Graduate, by Sex .....	21
— Full-Time Equivalent .....	21
— Evening College .....	22
— Summer Session .....	22
— Geographic Distribution of Students .....	23
— International Students by School .....	24
— International Students by Class or Program .....	24
— International Students by Sex and Program .....	24
— International Students by Country .....	25
— Minority Enrollment .....	26
— Veteran Enrollment .....	26

	Page
Undergraduate Degrees Conferred:	
— by Degree and Number of Majors .....	27
— by Major .....	28
— by School and by Major .....	29
Undergraduate and Graduate Degrees Conferred, by Degree and Sex .....	30
Health Services .....	31
Undergraduate and Graduate Financial Aid:	
— Number of Students .....	32
— Dollars .....	33
<b>III. ALUMNI</b>	
Boston College Alumni Clubs .....	36
Board of Directors .....	36
Comparative Regional Analysis .....	37
Geographic Analysis by State .....	37
Living Alumni by Primary School, Sex and Class .....	38
Alumni Donors by Primary School and Class .....	40
New Heights Advancement Campaign .....	42
Individual Donors by Giving Club .....	42
<b>IV. PHYSICAL PLANT</b>	
Map — Chestnut Hill Campus .....	44
Map — Newton Campus .....	45
Map — Weston Observatory .....	46
Boston College Properties .....	47
Buildings Related to Boston College Operation .....	48
Summary of Building Use .....	49
Classrooms .....	50
Dining Facilities .....	50
Offices .....	50
Facility Capacities .....	51
Residence Hall Statistics .....	52
<b>V. FINANCE</b>	
Highlights of Financial Operations .....	54
H.E.F.A. Bond Issues .....	54
Tuition and Fees — For the Eight Years Ended June 30, 1982 .....	55
Tuition Restated in 1967 Dollars .....	56
Contracts and Grants, Source and Application, 1980-81 .....	56
Contract and Grant Awards 1980-81 .....	57
Selected Contract and Grant Awards 1980-81 .....	58
<b>VI. LIBRARIES</b>	
Libraries .....	62
Expenditures for Library Materials .....	62
Holdings by Individual Libraries .....	62
Circulation Statistics .....	62
Computer Searches .....	63
Special Collections .....	65
Special Library Services .....	66

**VII. ATHLETICS**

Varsity Sports .....	68
Club Sports .....	68
Intramurals .....	69
Unstructured Recreation and Lessons .....	69
Varsity Sports Records .....	70
Varsity Football Schedules 1981-84 .....	70
Varsity Hockey Schedule — 1981-82 .....	71
Varsity Basketball Schedule — 1981-82 .....	71

**VIII. GENERAL INFORMATION**

Honorary Degrees .....	74
Honorary Degrees Awarded, 1952-81 .....	75
Founder and Presidents .....	78
Types of Degrees Conferred .....	79
Accreditation and Memberships of the University .....	79
Academic Department Locations .....	80
Sources .....	81
Academic Calendar .....	82

## FOREWORD

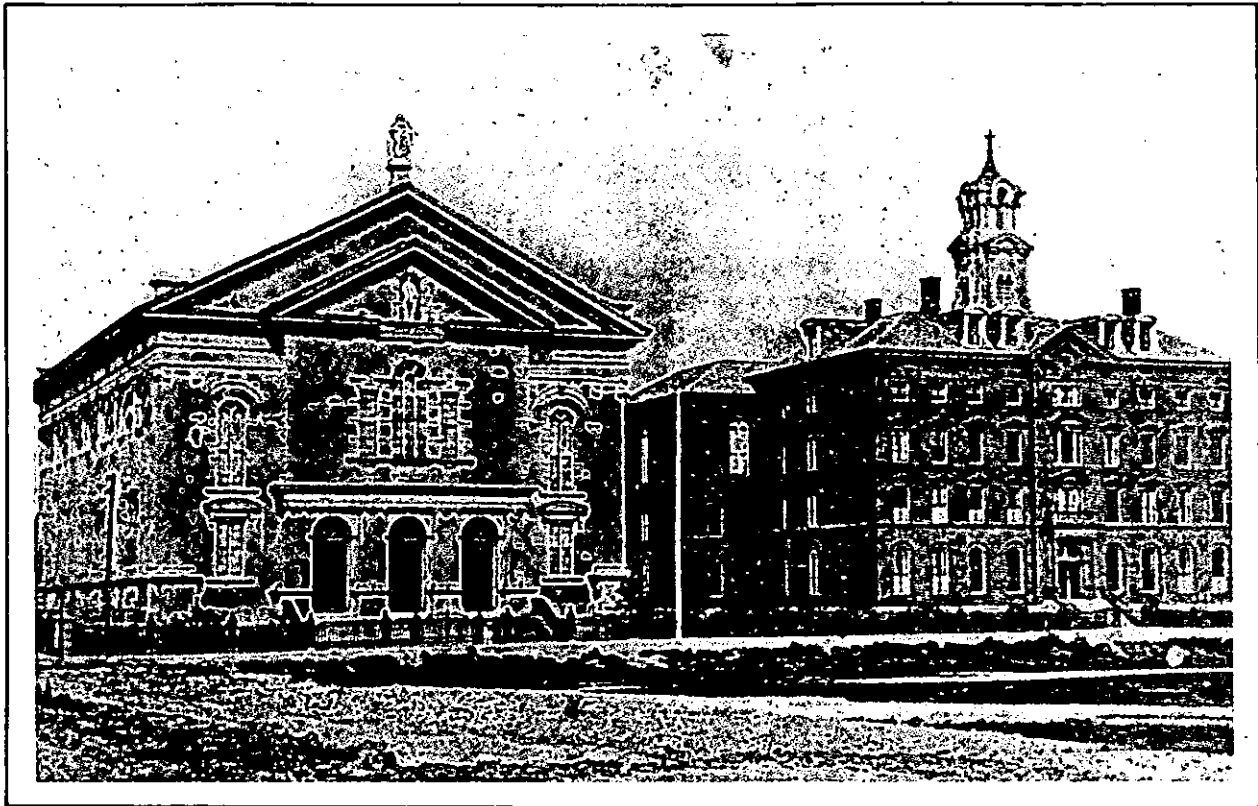
The *Boston College Fact Book* is a summary of significant statistics gathered from various sources throughout the University. We wish to extend sincere thanks and appreciation for the excellent cooperation and assistance received from these many sources.

The purpose of the *Fact Book* is to produce a single-source publication and reference document touching upon and integrating all aspects of the institution's people and its operations. We do wish to point out to all users that the information presented herein was compiled at a specific time — August-September, 1981 — to reflect the Academic Year 1980-1981. The majority of the information is extracted from management reports produced on a regular basis by the various source offices. When interpreting the figures presented we advise you to always note the time frame referenced in the individual tables.

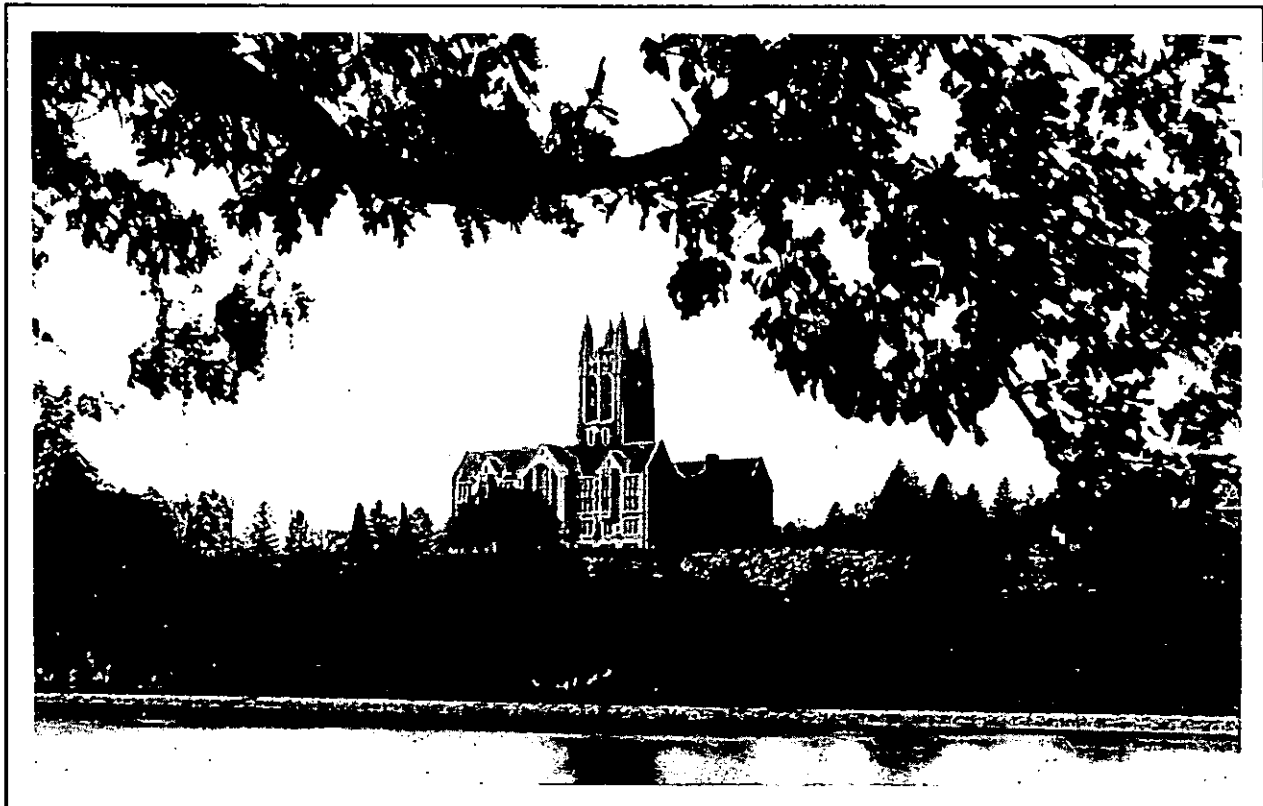
We continue to revise our format and add new information in an effort to make the *Fact Book* as current as possible, as well as an historical overview. Ideas for improvements and suggestions for additional data are encouraged.

Office of the  
Financial Vice President and Treasurer

November, 1981



*The original arrangement of the buildings at the old Boston College.  
Photographed sometime before 1875 by Oliver Wendell Holmes.*



*The Recitation Building (Gasson Hall) on the Lawrence reservoir, circa 1914.*

## BOSTON COLLEGE

### *A Brief History*

Boston College was founded by the Society of Jesus in 1863, and is one of twenty-eight Jesuit colleges and universities in the United States. With three teachers and twenty-two students, the school opened its doors on September 5, 1864. While it remained a small liberal arts college, the faculty was predominantly Jesuit, but today's full-time faculty is comprised of 44 Jesuits and over 500 lay men and women. Part-time faculty positions are held by 22 Jesuits, in addition to 19 Jesuit members of the university administration.

Originally located on Harrison Avenue in the South End of Boston, where it shared quarters with the Boston College High School, the College outgrew its urban setting toward the end of its first fifty years. A new location was selected in Chestnut Hill, then almost rural, and four parcels of land were acquired in 1907. A design competition for the development of the campus was won by the firm of Maginnis and Walsh, and ground was broken on June 19, 1909, for the construction of Gasson Hall. It is located on the site of the Lawrence farmhouse, in the center of the original tract of land purchased by Father Gasson, and is built largely of stone taken from a quarry which occupied part of the sites of Devlin, Higgins, and Cushing Halls. The foundations were blasted out of solid ledge. Because of its historic value, Gasson was completely restored in 1976 in order to preserve its familiar Gothic spires for future generations of students and alumni.

Later purchases doubled the size of the property, with the addition of the upper campus in 1941, and the lower campus with the purchase of the Lawrence Basin and adjoining land in 1949. In 1974 Boston College acquired Newton College of the Sacred Heart, a mile-and-a-half from the main campus. With fifteen handsome Georgian buildings standing in a park-like estate of forty acres, it is now the site of the Boston College Law School, as well as several academic departments, and dormitories housing over 800 freshmen and sophomores.

Though incorporated as a University since its beginning, it was not until its second half-century that Boston College began to fill out the dimensions of its University charter. The Summer Session was inaugurated in 1924; the Graduate School of Arts and Sciences in 1925; the Law School, 1929; the Evening College, 1929; the Graduate School of Social Work, 1936; the College of Business Administration, 1938. The latter, along with its Graduate School established in 1957, is now known as the School of Management. The Schools of Nursing and Education were founded in 1947 and 1952, respectively. Weston Observatory, founded in 1928, was accepted as a Department of Boston College in 1947, offering courses in geophysics and geology to graduate students.

In 1927 Boston College conferred one earned bachelor's degree and fifteen master's degrees on women through the Extension Division, the precursor of the Graduate School of Arts and Sciences, the Evening College, and the Summer Session. Today's women students comprise more than 57 percent of the University's enrollment, and 37 percent of a total alumni body of almost 75,000.

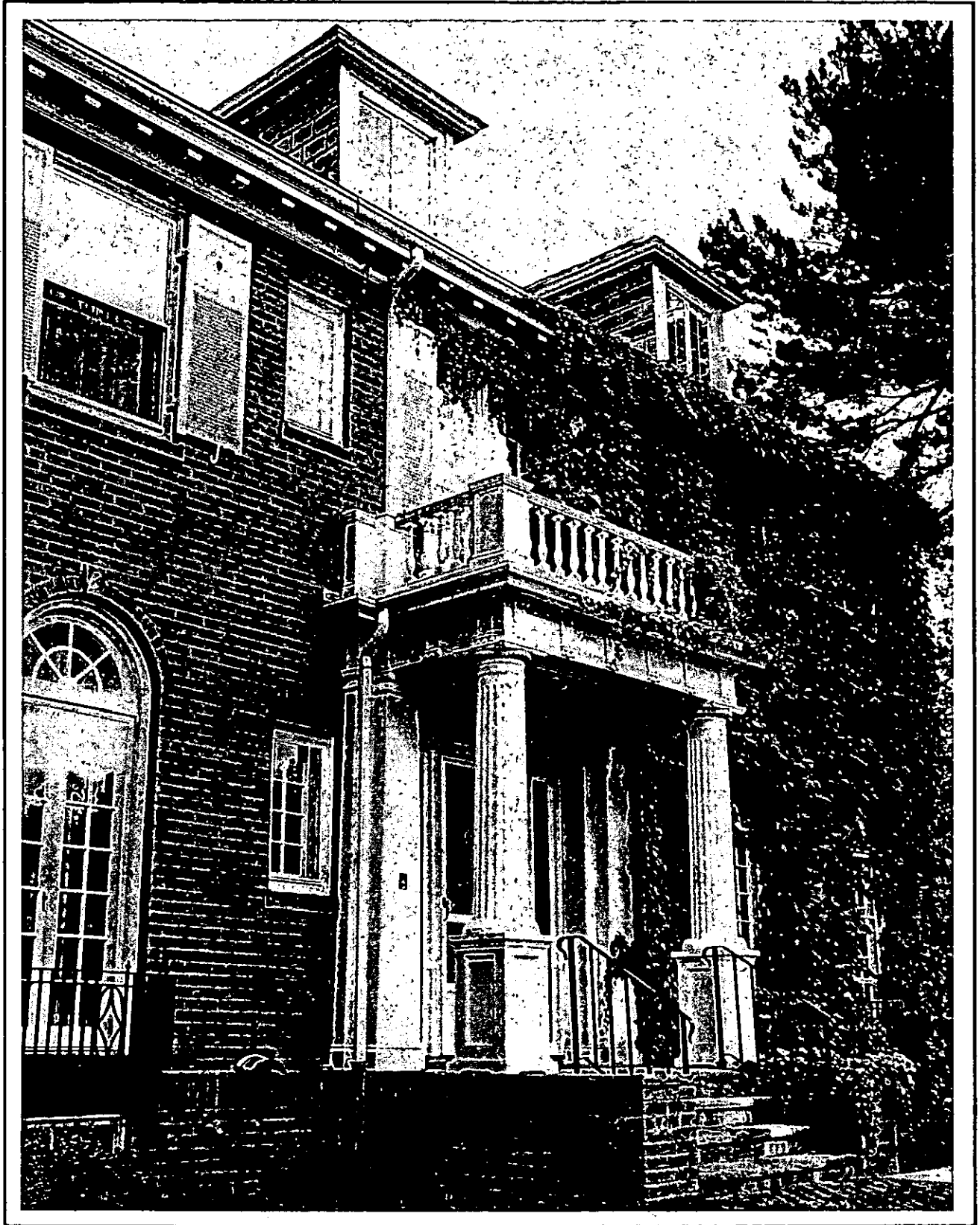
Now the fourth largest private university in New England, with full- and part-time enrollment of over 14,000, Boston College consists of eleven schools, colleges, and institutes offering thirteen degree programs and one certification program.



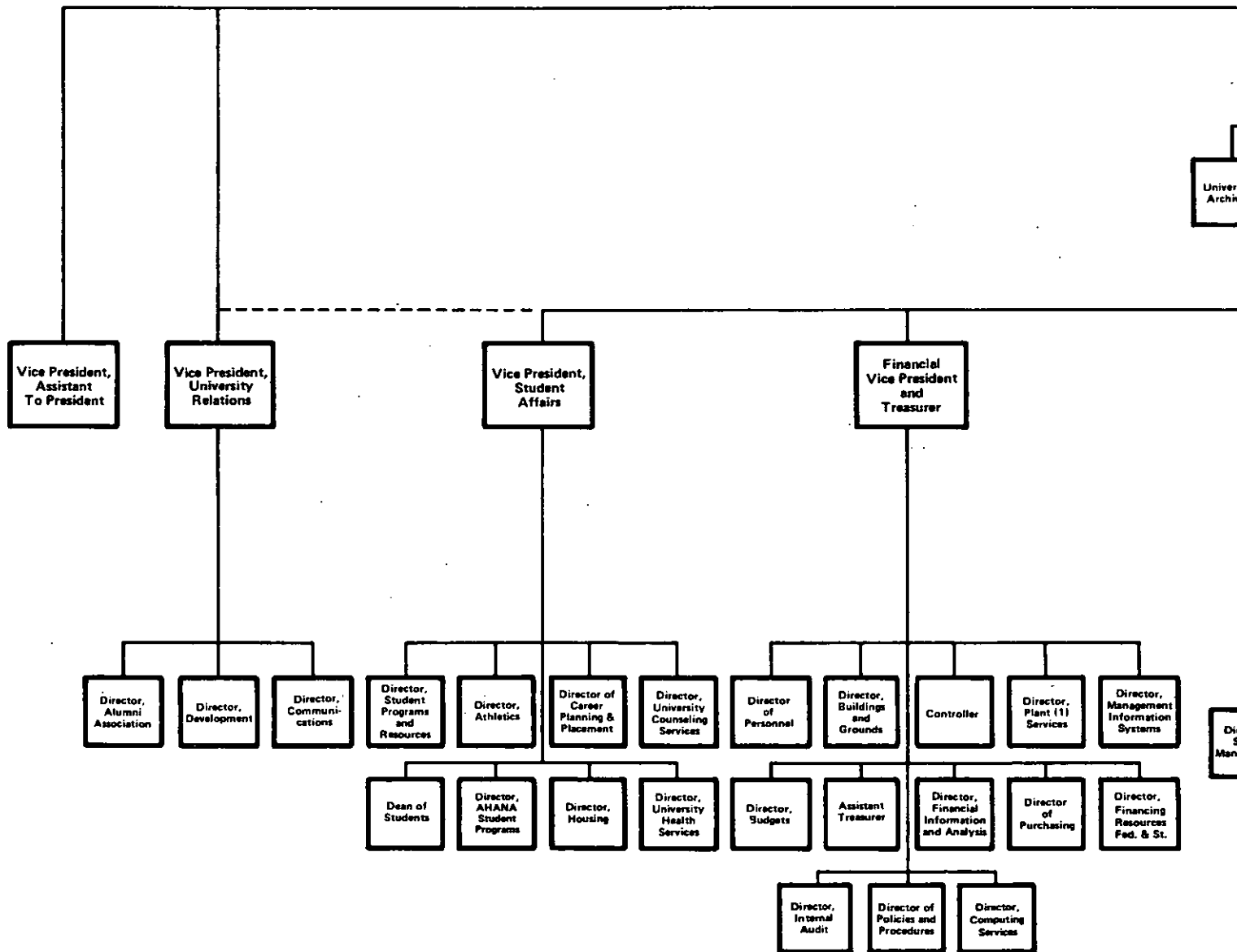
## BOSTON COLLEGE PROFILE

	1980-81
<b>ADMISSIONS</b>	
Applicants (Class of '85)	12,748
Enrollees (Class of '85)	
Men	796
Women	1,148
Total Freshman Class	<u>1,944</u>
<b>ENROLLMENT — (Full- and Part-Time)</b>	
Undergraduate	10,767
Graduate	3,678
Total Enrollment	<u>14,445</u>
<b>PERSONNEL</b>	
Full-Time Faculty	558
Part-Time Faculty (FTE)	119
Teaching Fellows	76
Graduate Assistants	275
Total Administrative/Professional Staff & Sponsored Research (Aug. '81)	552
Total Secretarial/Clerical & Sponsored Research (Aug. '81)	473
Total Physical Plant Positions (Aug. '81) General Service (Aug. '81)	219 247
<b>DEGREES CONFERRED</b>	
Undergraduate	2,201
Graduate & Professional	1,130
Total Degrees Conferred	<u>3,331</u>
<b>ALUMNI</b>	74,908
<b>LIBRARIES — (Total Holdings) — Volumes</b>	873,833
<b>PHYSICAL PLANT</b>	
Acres (owned properties)	
Chestnut Hill Campus	110.60
Newton Campus	40.20
Other	9.17
Total Acres	<u>159.97</u>
Buildings (utilized properties)	
Administrative/Academic	31
Student Housing	23
Other	24
Total Buildings	<u>78</u>
<b>FINANCE</b>	
Revenues	\$97,200,000
Expenditures and Transfers	\$97,100,000

# ADMINISTRATION & FACULTY



# NOTES



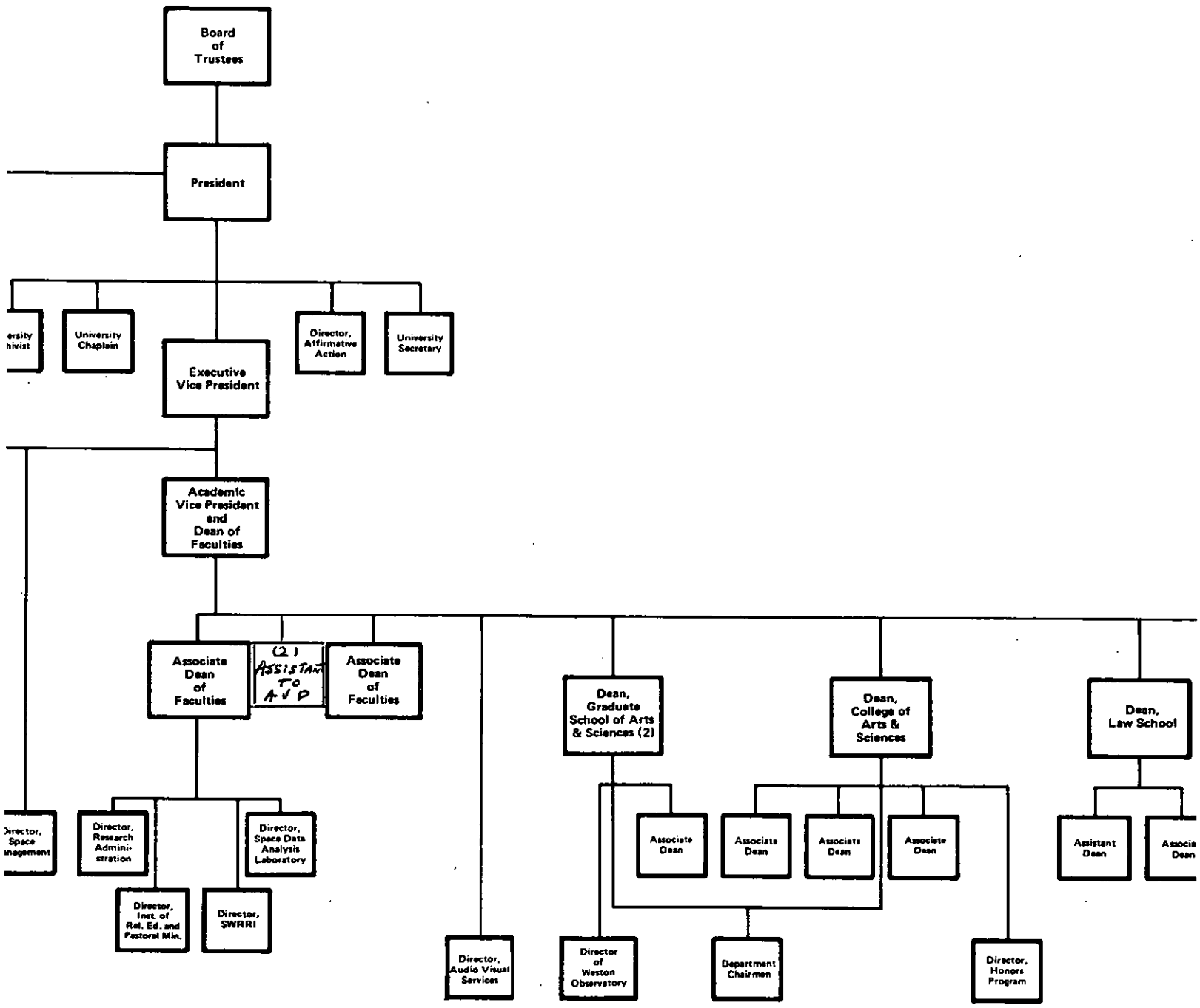
Univer  
Archiv

Dis  
5  
Man

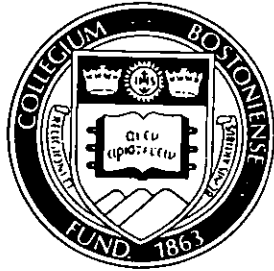
NOTE: University administrators occupying the positions reflected above are listed on pages 6 and 7.

Source: Office of Personnel Relations

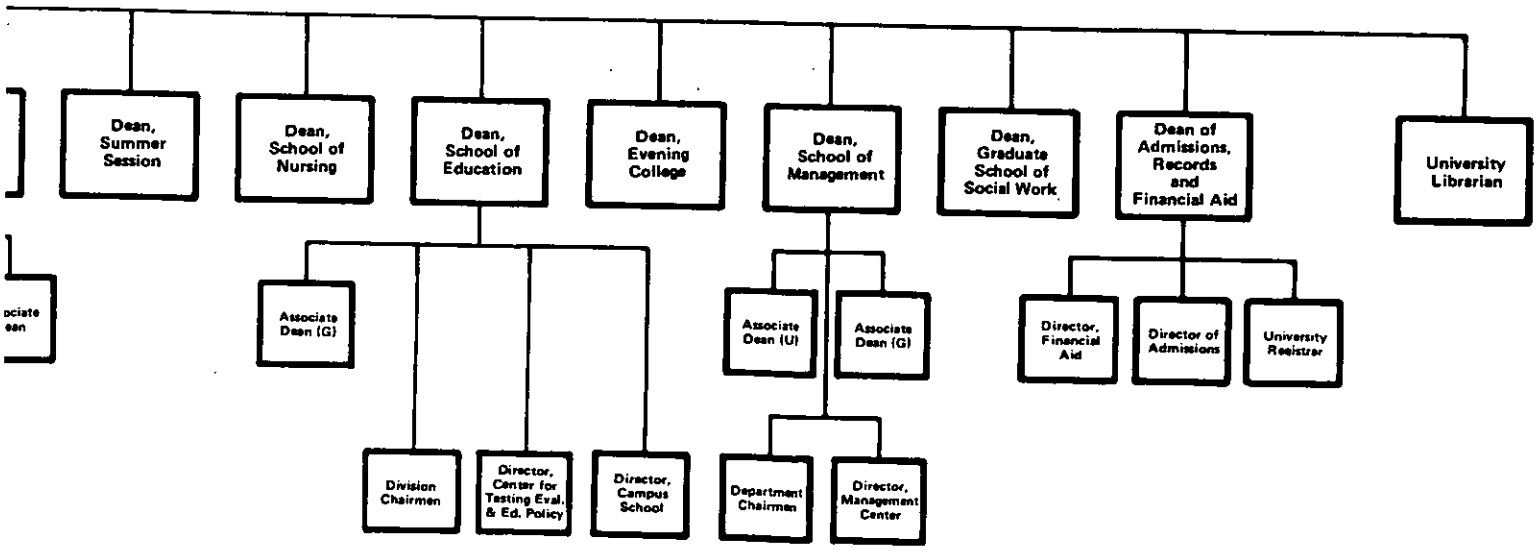
(1) Bookstore  
Bureau of Conferences  
Campus Police  
Dining Services  
Housekeeping  
Mail  
Plant Services  
Telecommunications



(2) Includes Graduate Programs in Education and Nursing



**BOSTON COLLEGE  
CHART OF ADMINISTRATION, 1981**



**BOARD OF TRUSTEES MEMBERSHIP†  
1981-82**

Joseph F. Abely, Jr., '50  
*Vice Chairman of the Board*  
*R.J. Reynolds Industries, Inc.*

Geoffrey T. Boisi, '69  
*General Partner*  
*Goldman Sachs*

Milton C. Borenstein, '35  
*President*  
*Sweetheart Paper Products Co.*

Wayne A. Budd, '63  
*Partner*  
*Budd, Reilly & Wiley*

Donald R. Campion, S.J.  
*Secretary for Communication*  
*Jesuit Conference*

John M. Cataldo, '44  
*President*  
*National Freight Traffic Service*

William F. Connell\*, '59  
*Chairman of the Board and President*  
*Ogden Food Service Corporation*

John M. Connors, Jr., '63  
*President*  
*Hill, Holliday, Connors, Cosmopolos, Inc.*

George L. Drury, S.J., '45, M.A. '46, M.S. '49, M.S. '58  
*Director of Retreats*  
*Eastern Point Retreat House*

Joseph R. Fahey, S.J., '60, M.A. '61  
*Academic Dean (1971-1981)*  
*College of the Holy Cross*  
*(Sabbatical Year)*

Thomas J. Flanagan, '42  
*President*  
*Pan Am World Services, Inc.*

Thomas J. Flatley  
*President*  
*The Flatley Company*

Thomas J. Gibbons, S.J.\*, '53, M.A. '54, S.T.L. '61  
*Principal*  
*Boston College High School*

Anne P. Jones\*, '58, J.D. '61  
*Commissioner*  
*Federal Communications Commission*

The Honorable Edward M. Kennedy, LL.D. '66 (Hon.)  
*United States Senator*

Francis C. Mackin, S.J.\*, M.A. '53  
*Vice President: Westchester*  
*Fordham University*

Joseph E. McCormick, S.J., M.A. '46  
*Director for Vocations*  
*Campion Residence and Renewal Center*

John G. McElwee, J.D. '50  
*President and Chief Operations Officer*  
*John Hancock Mutual Life Insurance Co.*

John J. McMullen  
*Chairman*  
*John J. McMullen Associates, Inc.*

William W. Meissner, S.J.  
*Associate Clinical Professor of Psychiatry*  
*Harvard Medical School*

J. Donald Monan, S.J.\*  
*President*  
*Boston College*

Thomas M. Moran, '48  
*Vice President*  
*Charter Oil Company*

Robert J. Morrissey, '60  
*Partner*  
*Withington, Cross, Park & Groden*

Emma Jeanne Mudd  
*Boston College parent*

Michael E. Murphy, '58  
*Executive Vice President and Chief Financial and*  
*Administrative Officer*  
*Consolidated Foods Corporation*

The Honorable David S. Nelson\*, '57, J.D. '60,  
LL.D. '79 (Hon.)  
*United States District Judge*

Walter J. Neppi  
*Vice Chairman of the Board*  
*J.C. Penney Co., Inc.*

Robert J. O'Keefe, '51  
*Senior Vice President*  
*American Security Bank N.A.*

James P. O'Neill\*, '42  
*Executive Vice President*  
*Xerox Corporation*

The Honorable Thomas P. O'Neill, Jr., '36, LL.D. '73 (Hon.)  
*Speaker of the House of Representatives*

John W. Padberg, S.J.  
*President*  
*Weston School of Theology*

Clare A. Schoenfeld, '72  
*Manager of Information Systems Planning*  
*American Express Company*

†Only Boston College Degrees listed.

\*Executive Committee Member

Daniel J. Shine, S.J. '44, M.A. '45  
*Rector of the Jesuit Community  
 Boston College*

Helen M. Stanton, M.S.W. '43  
*Co-Chairman, Boston College Parents' Committee*

Robert J. Starratt, S.J., '59, M.A. '60  
*Director  
 Commission on Research and Development  
 Jesuit Secondary Education Association*

\*Executive Committee Member  
*Source: President's Office*

Sandra J. Thomson, M.D., '58 (Newton College)  
*Department of Orthopaedic Surgery  
 Children's Hospital Medical Center*

Joseph F. Turley  
*President  
 The Gillette Company*

Thomas A. Vanderslice\*, '53  
*President and Chief Operating Officer  
 General Telephone & Electronics Corporation*

An Wang  
*Chairman of the Board and President  
 Wang Laboratories, Inc.*

### TRUSTEES OF BOSTON COLLEGE DECEMBER, 1972 THROUGH SEPTEMBER, 1982

Joseph F. Abely, Jr.	1975-83	Francis C. Mackin, S.J.	1972-78, 1980-84
Raymond C. Baumhart, S.J.	1972-73	Joseph E. McCormick, S.J.	1977-85
Geoffrey T. Boisi	1981-85	John G. McElwee	1978-82
Milton C. Borenstein	1979-83	Leo J. McGovern, S.J.	1974-77
Joseph G. Brennan	1972-73	John J. McMullen	1978-82
William L. Brown	1973-81	William W. Meissner, S.J.	1979-83
Wayne A. Budd	1980-84	Robert A. Mitchell, S.J.	1972-80
Robert F. Byrnes	1972-73	J. Donald Monan, S.J.	1972- 1980-84
Donald R. Campion, S.J.	1980-84	Thomas M. Moran	1980-84
Wallace E. Carroll	1972-74	Diane J. Morash	1977-81
John M. Cataldo	1978-82	Robert J. Morrissey	1980-84
James F. Cleary	1972-80	Giles E. Mosher, Jr.	1972-78
William F. Connell	1974-82	Emma Jeanne Mudd	1981-85
John M. Connors, Jr.	1979-83	Michael E. Murphy	1980-84
Joseph F. Cotter	1972-79	David S. Nelson	1972-78, 1979-83
James H. Coughlin, S.J.	1972-75	Walter J. Neppi	1981-85
George L. Drury, S.J.	1977-85	Francis Nicholson, S.J.	1972-76
Francis Dubreuil	1972-73	William J. O'Halloran, S.J.	1972-78
Christopher Duncan	1972-73	Joseph A. O'Hare, S.J.	1973-81
Joseph R. Fahey, S.J.	1972-79, 1981-85	Robert J. O'Keefe	1974-82
John T. Fallon	1972-78	Adrian O'Keefe	1972-73
Joseph A. Fitzmyer, S.J.	1972-73	James P. O'Neill	1973-85
Stephen E. Fix	1976-80	Thomas P. O'Neill, Jr.	1972-84
Thomas J. Flanagan	1979-83	Cornelius W. Owens	1972-80
Thomas J. Flatley	1978-82	John W. Padberg, S.J.	1975-83
Maureen Foley	1973-77	John P. Reboli, S.J.	1972-75
Jean Ford, R.S.C.J.	1974-77	Clare A. Schoenfeld	1980-84
Thomas J. Galligan, Jr.	1972-80	Joseph L. Shea, S.J.	1972-77
Thomas J. Gibbons, S.J.	1975-83	Daniel J. Shine, S.J.	1976-84
Avram J. Goldberg	1972-78	Helen M. Stanton	1977-85
Eli Goldston	1972-74	Robert J. Starratt, S.J.	1978-82
Patricia A. Goler	1972-80	Sandra J. Thomson	1977-85
Anne P. Jones	1977-85	Joseph F. Turley	1981-85
William J. Kenealy, S.J.	1972-74	Thomas A. Vanderslice	1978-82
Edward M. Kennedy	1976-83	Michael P. Walsh, S.J.	1972-80
Mary M. Lai	1972-79	An Wang	1978-82
T. Vincent Learson	1974-76	Thomas J. Watson, III	1973-76
S. Joseph Loscocco	1972-77	Thomas J. White	1972-76
John Lowell	1972-79	Vincent C. Ziegler	1972-78
Joseph F. MacDonnell, S.J.	1973-81		

*Source: President's Office*



**OFFICERS OF THE UNIVERSITY  
FALL 1981**

*President*  
*Executive Vice President*  
*Vice President of Student Affairs*  
*Vice President, Assistant to the President*  
*Secretary of the University*  
*Vice President for University Relations*  
*Academic Vice President and Dean of Faculties*  
*Financial Vice President and Treasurer*

J. Donald Monan, S.J.  
Francis B. Campanella  
Kevin P. Duffy  
Margaret A. Dwyer  
Leo J. McGovern, S.J.  
James P. McIntyre  
Joseph A. Panuska, S.J.  
John R. Smith

**ACADEMIC DEANS  
FALL 1981**

*Admissions, Records and Financial Aid*  
John J. Maguire, Dean

*Faculties*

Robert R. Newton, Associate Dean  
Donald J. White, Associate Dean

*The College of Arts and Sciences*

William B. Neenan, S.J., Dean  
Carol Hurd Green, Associate Dean  
Marie M. McHugh, Associate Dean  
Henry J. McMahan, Associate Dean

*The Evening College of Arts, Sciences and Business Administration*  
James A. Woods, S.J., Dean

*The Graduate School of Arts and Sciences*

Donald J. White, Dean  
George R. Fuir, S.J., Associate Dean

*The School of Education*

Mary D. Griffin, Dean  
Edward B. Smith, Associate Dean

*The Law School*

Richard G. Huber, Dean  
John M. Flackett, Associate Dean  
Noel J. Augustyn, Assistant Dean

*The School of Management*

John J. Neuhauser, Dean  
Justin C. Cronin, Associate Dean  
William B. Torbert, Associate Dean

*The School of Nursing*

Mary A. Dineen, Dean

*The Graduate School of Social Work*

June G. Hopps, Dean

*The Summer Session*

George R. Fuir, S.J., Dean

*Source: Office of Personnel Relations*

Note: Administrative positions listed on pages 6 and 7 are limited to those reflected on the Chart of Administration, page 3.

**UNIVERSITY ADMINISTRATORS  
FALL 1981**

*Director, Admissions*

Charles S. Nolan

*Director, Affirmative Action*

Alice Jehgelian

*Director, AHANA, Student Programs*

Donald Brown

*Executive Director, Alumni Association*

John F. Wissler

*University Archivist*

Paul A. FitzGerald, S.J.

*Director, Athletics*

William J. Flynn

*Director, University Audio-Visual Services*

Fred J. Pula

*Director, University Budgets*

James P. Kennedy

*Director, Buildings and Grounds*

Alfred G. Pennino

*Director, Campus School*

John R. Eichorn

*Director, Career Planning and Placement*

John E. Steele

*University Chaplain*

John A. Dinneen, S.J.

*Director, Communications*

Paul J. Hennessy

*Director, Computing Services*

Donald S. Zitter

*Controller*

Catherine H. Briel

*Director, University Counseling Services*

Weston M. Jenks, Jr.

*Director, Development*

Karl M. Salathe

*Director, Financial Aid*

Paul C. Combe

*Director, Financial Information and Analysis*

Michael T. Callnan

*Director, Financing Resources, Federal and State*

Francis F. Mills

*Director, Health Services*

Arnold F. Mazur, M.D.

*Director, Honors Program, College of  
Arts & Sciences*

David H. Gill, S.J.

*Director, Housing*

Richard E. Collins

*Director, Internal Audit*

John Dunnet

*University Librarian*

Thomas F. O'Connell

*Director, Management Center*

John McKiernan

*Director, Management Information Systems*

Bernard W. Gleason, Jr.

*Director, Personnel*

Leo V. Sullivan

*Director, Plant Services*

Joseph F. MacSweeney

*Director, University Policies and Procedures*

Fred B. Mills, Jr.

*Director, Purchasing*

John D. Beckwith

*University Registrar*

Louise M. Lonabocker

*Director, Research Administration*

Charles F. Flaherty

*Director, Social Welfare Regional*

*Research Institute*

Barry A. Bluestone

*Director, Space Data Analysis Laboratory*

Leo F. Power, Jr.

*Director, Space Management*

Roderick G. Wallick

*Dean of Students*

Edward J. Hanrahan, S.J.

*Director, Student Programs and Resources*

Carole L. Wegman

*Director, Center for Testing Evaluation and  
Educational Policy*

George F. Madaus

*Assistant Treasurer*

Philip C. Thompson

*Director, Weston Observatory*

James W. Skehan, S.J.

*Source: Office of Personnel Relations*

**DEPARTMENT CHAIRMEN AND CHAIRWOMEN  
FALL 1981**

Accounting	Louis S. Corsini
Administrative Sciences	David C. Murphy
Biology	Jonathan J. Goldthwaite
Chemistry	Jeong-Long Lin
Classical Studies	Eugene W. Bushala
Computer Sciences	James Gips
Economics	Richard W. Tresch
English	Joseph A. Appleyard, S.J.
Finance	Jerry A. Viscione
Fine Arts	Marianne W. Martin
Geology and Geophysics	John C. Hepburn
Germanic Studies	Christoph Eykman
History	Alan Rogers
Law	Alfred E. Sutherland
Marketing	Michael P. Peters
Mathematics	Paul R. Thie
Organizational Studies	James L. Bowditch
Philosophy	Joseph F.X. Flanagan, S.J.
Physics	Robert L. Carovillano
Political Science	David Manwaring
Psychology	Randolph Easton
Romance Languages and Literatures	Vera G. Lee
Slavic and Eastern Languages	Michael J. Connolly
Sociology	Lynda Holmstrom
Speech Communication and Theatre	Donald Fishman
Theology	Robert J. Daly, S.J.

*Source: Office of the Academic Vice President*

**PROFESSIONAL, ADMINISTRATIVE AND SUPPORT STAFF PERSONNEL  
AS OF JULY 1981**

	Full-Time		Open Positions	Total Positions	Part-Time		Open Positions	Total Positions
	Men	Women			Men	Women		
Professional/Administrative								
Dean of Faculties	41	40	6	87	9	3	6	105
Business/Finance	72	30	6	108	1	1	-	110
Student Affairs	47	30	-	77	26	13	9	125
University Relations	21	7	2	30	1	1	-	32
President's Office	3	3	-	6	-	-	-	6
Chaplain's Office	5	4	-	9	-	-	-	9
Executive Vice President	2	-	-	2	-	-	-	2
Libraries	16	21	-	37	-	1	-	38
Subtotal Professional/ Administrative	<u>207</u>	<u>135</u>	<u>14</u>	<u>356</u>	<u>37</u>	<u>19</u>	<u>15</u>	<u>427</u>
Sponsored Research	67	35	-	102	7	16	-	125
Total Professional/ Administrative and Sponsored Research	<u>274</u>	<u>170</u>	<u>14</u>	<u>458</u>	<u>44</u>	<u>35</u>	<u>15</u>	<u>552</u>
Secretary/Clerical	25	255	16	296	-	39	5	340
Libraries	22	42	2	66	1	8	-	75
Subtotal Secretary/Clerical	<u>47</u>	<u>297</u>	<u>18</u>	<u>362</u>	<u>1</u>	<u>47</u>	<u>5</u>	<u>415</u>
Sponsored Research (Includes Research Assistants)	10	28	-	38	5	15	-	58
Total Secretary/Clerical and Sponsored Research	<u>57</u>	<u>325</u>	<u>18</u>	<u>400</u>	<u>6</u>	<u>62</u>	<u>5</u>	<u>473</u>
Physical Plant Personnel								
Grounds	35	2	1	38	2	-	-	40
Tradespeople	42	-	2	44	-	-	-	44
Housekeeping	89	14	5	108	-	-	-	108
Mailroom	10	2	-	12	-	2	-	14
Switchboard	2	5	1	8	3	2	-	13
Total Physical Plant	<u>178</u>	<u>23</u>	<u>9</u>	<u>210</u>	<u>5</u>	<u>4</u>	<u>-</u>	<u>219</u>
Campus Police	35	3	-	38	-	-	-	38
Gate Attendants	12	-	-	12	5	-	-	17
Dining Department	66	34	16	116	1	9	1	127
General Service	12	3	-	15	11	17	-	43
General Service Sponsored Research	15	7	-	22	-	-	-	22
Total General Service	<u>140</u>	<u>47</u>	<u>16</u>	<u>203</u>	<u>17</u>	<u>26</u>	<u>1</u>	<u>247</u>
<b>TOTAL POSITIONS*</b>	<u>649</u>	<u>565</u>	<u>57</u>	<u>1271</u>	<u>72</u>	<u>127</u>	<u>21</u>	<u>1491</u>

\*The totals represent all of the authorized and budgeted positions for the above classifications as of July 1981.

Source: Office of Personnel Relations

## FACULTY

### FACULTY BY SCHOOL AND RANK 1980-81

School	Professor		Associate		Assistant		Instructor		Total	
	No.	% Faculty	No.	% Faculty	No.	% Faculty	No.	% Faculty	No.	%
Arts & Sciences	78	23	142	43	105	31	8	3	333	100
Education	19	36	16	30	12	23	6	11	53	100
Management	13	21	23	38	15	25	10	16	61	100
Nursing	2	3	21	34	15	24	24	39	62	100
Law	16	52	2	6	9	29	4	13	31	100
Social Work	4	22	9	50	2	11	3	17	18	100
<b>Total</b>	<b>132</b>	<b>24</b>	<b>213</b>	<b>38</b>	<b>158</b>	<b>28</b>	<b>55</b>	<b>10</b>	<b>558</b>	<b>100</b>

Source: Office of the Academic Vice President

### FULL-TIME EQUIVALENT FACULTY BY SCHOOL\* 1980-81

School	Full-Time		FTE of Part-Time		Total FTE Faculty	
	No.	%	No.	%	No.	%
Arts & Sciences	333	60	75	63	408	60
Education	53	9	9	8	62	9
Management	61	11	11	9	72	11
Nursing	62	11	13	11	75	12
Law	31	6	6	5	37	5
Social Work	18	3	5	4	23	3
<b>Total</b>	<b>558</b>	<b>100</b>	<b>119</b>	<b>100</b>	<b>677</b>	<b>100</b>

\*Method of computation: three courses equals one full-time faculty member.

Source: Office of the Academic Vice President

NOTE: Figures representing full-time faculty do not include the following: full-time academic administrators or directors, teaching fellows, special contracts; part-time academic administrators or staff.

Graduate faculty of the Departments of Education and Nursing of the Graduate School of Arts and Sciences are included in tables with their respective schools.

**FACULTY BY SCHOOL AND  
TENURE STATUS  
1980-81**

School	Tenured %		Non-Tenured %		Total	
	No.	Faculty	No.	Faculty	No.	%
Arts & Sciences	237	71	96	29	333	100
Education	36	68	17	32	53	100
Management	34	56	27	44	61	100
Nursing	21	34	41	66	62	100
Law	17	55	14	45	31	100
Social Work	13	72	5	28	18	100
Total	358	64	200	36	558	100

Source: Office of the Academic Vice President

**FACULTY BY SCHOOL AND SEX  
1980-81**

School	Women		Men		Total	% Women Men	
	No.	%	No.	%		Women	Men
Arts & Sciences	56	36	277	69	333	17	83
Education	15	10	38	9	53	28	72
Management	7	5	54	13	61	11	89
Nursing	61	40	1	1	62	98	2
Law	7	4	24	6	31	23	77
Social Work	8	5	10	2	18	44	56
Total	154	100	404	100	558	28	72

Source: Office of the Academic Vice President

**FACULTY BY HIGHEST EARNED DEGREE AND RANK  
1980-81**

Degree	Professor		Associate		Assistant		Instructor		Total	
	No.	%	No.	%	No.	%	No.	%	No.	%
Doctorate	122	22	195	35	125	22	-	-	442	79
Masters	1	-	15	3	26	5	49	9	91	17
First Professional*	9	2	3	-	7	1	6	1	25	4
<b>Total</b>	<b>132</b>	<b>24</b>	<b>213</b>	<b>38</b>	<b>158</b>	<b>28</b>	<b>55</b>	<b>10</b>	<b>558</b>	<b>100</b>

\*Including LLB, JD, STB, PhL, and STL.

Source: Office of the Academic Vice President

**FACULTY BY HIGHEST EARNED DEGREE AND SEX  
1980-81**

Degree	Women		Men		Total	
	No.	%	No.	%	No.	%
Doctorate	88	57	354	88	442	79
Masters	59	38	32	8	91	17
First Professional*	7	5	18	4	25	4
<b>Total</b>	<b>154</b>	<b>100</b>	<b>404</b>	<b>100</b>	<b>558</b>	<b>100</b>

\*Including LLB, JD, STB, PhL, and STL.

Source: Office of the Academic Vice President

**FACULTY BY RANK AND SEX  
1980-81**

Rank	Women		Men		Total	
	No.	%	No.	%	No.	%
Professor	13	9	119	30	132	24
Associate	54	35	159	39	213	38
Assistant	56	36	102	25	158	28
Instructor	31	20	24	6	55	10
<b>Total</b>	<b>154</b>	<b>100</b>	<b>404</b>	<b>100</b>	<b>558</b>	<b>100</b>

Source: Office of the Academic Vice President

**FULL-TIME FACULTY, GRADUATE ASSISTANTS, TEACHING FELLOWS  
BY SCHOOL AND DEPARTMENT  
1980-81**

	Full-Time Faculty	Graduate Asst's.	Teaching Fellows
<b>Arts &amp; Sciences</b>			
Biology	18	23	4
Chemistry	18	25	-
Classics	3	-	-
Economics	22	16	15
English	38	6	10
Fine Arts	11	(No Graduate Dept.)	
Geology	10	19	-
German	4	(No Graduate Dept.)	
History	34	18	-
Mathematics	22	-	10
Music	2	(No Graduate Dept.)	
Philosophy	22	5	19
Physics	10	17	-
Political Science	16	14	-
Psychology	19	10	-
Romance Languages	14	3	9
Slavic/Eastern	4	2	-
Sociology	22	22	-
Speech	10	(No Graduate Dept.)	
Theology	34	6	-
<b>Arts &amp; Sciences</b>			
Total	<u>333</u>	<u>186</u>	<u>67</u>
Education	53	70	9
Law	31	-	-
Management	61	17	-
Nursing	62	-	-
Social Work	18	2	-
Total	<u>558</u>	<u>275</u>	<u>76</u>

\*School of Education Graduate Assistants include 15 in Audio-Visual Services and 4 with the Institute of Religious Education and Pastoral Ministry.

Source: Office of the Academic Vice President; Dean of Graduate School of Arts and Sciences.



**AVERAGE COMPENSATION BY RANK\***  
**AAUP CATEGORY I**  
**(9-MONTH EQUIVALENT)**  
**1980-81**

Rank	Boston College	All Combined Category	Church-Related
Professor	\$40,700	\$39,390	\$36,460
Associate	30,500	29,020	27,880
Assistant	24,500	23,430	22,570
Instructor	19,400	18,380	18,370

\*Includes salary and fringe benefits.

Sources: Office of the Academic Vice President; Academe, page 215, August, 1981.

**BOSTON COLLEGE FACULTY**  
**AVERAGE COMPENSATION BY RANK\***

Year	Professor	Associate	Assistant	Instructor
1976-77	\$29,800	\$23,300	\$18,900	\$16,300
1977-78	31,500	24,500	19,700	16,500
1978-79	34,100	26,000	20,700	15,900
1979-80	37,000	27,800	22,000	18,000
1980-81	40,700	30,500	24,500	19,400

\*Includes salary and fringe benefits.

Source: Office of the Academic Vice President

# STUDENTS



**FULL-TIME FRESHMAN ENROLLMENT  
BY YEAR AND SEX**

Fall	Enrollment		Total
	Men	Women	
1971	1,024	725	1,749
1972	1,253	976	2,229
1973	913	874	1,787
1974	1,144	1,008	2,152
1975	962	1,069	2,031
1976	1,041	1,091	2,132
1977	1,028	1,177	2,205
1978	901	1,176	2,077
1979	856	1,186	2,042
1980	927	1,244	2,171
1981	796	1,148	1,944

Source: Admissions Office

**FRESHMAN ENROLLEES  
SAT AVERAGES BY CLASS**

Class	Verbal	Mathematical
1975	530	554
1976	528	552
1977	518	554
1978	515	548
1979	504	544
1980	511	550
1981	496	538
1982	509	544
1983	516	552
1984	512	555
1985	507	555

Source: Admissions Office

**FRESHMAN APPLICATIONS, ACCEPTANCES AND ENROLLMENT  
(FULL-TIME)**

Fall	Applications	Acceptances	Acceptances % of Applications	Total Enrollment	Enrollment % of Acceptances	Enrollment % of Applications
1971	6,712	4,748	71	1,749	37	26
1972	7,286	5,077	70	2,229	44	31
1973	8,358	4,660	56	1,787	38	21
1974	8,377	4,964	59	2,152	43	26
1975	9,486	4,952	52	2,031	41	21
1976	10,848	5,548	51	2,132	38	20
1977	11,336	5,479	48	2,205	37	18
1978	12,411	4,821	39	2,077	43	17
1979	12,505	4,514	36	2,042	45	16
1980	12,640	4,389	35	2,171	49	17
1981	12,748	4,227	33	1,944	46	15

Source: Admissions Office

NOTE: Freshman enrollments as reported herein are actual deposits received, on or before the deadline set by the Committee on Admissions, from students accepting the offer of admission extended by the University. Withdrawals may occur during the summer and the first two weeks in September.

Acceptance and enrollment figures reported are based on deposits received as of 5/27/81.

**CLASS OF 1985  
APPLICATIONS, ACCEPTANCES AND ENROLLEES  
GEOGRAPHIC DISTRIBUTION**

State	Applications	Acceptances	Enrollees	State	Applications	Acceptances	Enrollees
Alabama	3	1	1	Nevada	2	2	1
Alaska	1	-	-	New Hampshire	212	67	35
Arizona	8	3	1	New Jersey	1,319	363	167
Arkansas	3	-	-	New Mexico	1	-	-
California	86	19	2	New York	2,245	663	241
Colorado	29	10	3	North Carolina	8	2	-
Connecticut	1,558	469	241	Ohio	124	36	15
Delaware	18	7	4	Oklahoma	6	2	-
District of Columbia	27	4	2	Oregon	5	-	-
Florida	117	42	25	Pennsylvania	418	110	45
Georgia	13	4	3	Puerto Rico	138	58	28
Hawaii	16	8	4	Rhode Island	429	175	87
Illinois	206	72	35	South Carolina	6	1	-
Indiana	19	7	4	Tennessee	7	3	2
Iowa	5	2	1	Texas	27	6	4
Kansas	7	2	2	Utah	1	-	-
Kentucky	9	3	1	Vermont	56	15	4
Louisiana	6	1	1	Virginia	71	18	8
Massachusetts	4,664	1,753	838	Virgin Islands	9	7	1
Maryland	210	57	23	Washington	7	2	-
Maine	166	56	32	West Virginia	5	2	-
Michigan	98	27	15	Wisconsin	48	19	8
Minnesota	51	15	6	Wyoming	1	-	-
Missouri	28	8	4	Foreign Nations	238	97	48
Mississippi	2	2	-				
Nebraska	15	7	2	<b>Total</b>	<b>12,748</b>	<b>4,227</b>	<b>1,944</b>

Source: Admissions Office

**UNDERGRADUATE TRANSFER STUDENT  
ENROLLMENT  
BY TYPE OF PREVIOUS INSTITUTION AND SEX**

Fall	2-Year Public	2-Year Private	4-Year Public	4-Year Private	Total	Men	Women	Total
1976	54	48	156	342	600	240	360	600
1977	35	28	79	204	346	113	233	346
1978	42	22	64	172	300	96	204	300
1979	33	11	95	163	302	114	188	302
1980	41	47	75	175	338	95	243	338
1981	38	22	80	224	364	152	212	364

Source: Admissions Office

**GRADUATE AND UNDERGRADUATE ENROLLMENT  
FULL- AND PART-TIME**

Year	Undergraduate			Graduate			Total
	F.T.*	P.T.	Total	F.T.	P.T.	Total	
1973-74	7,774	967	8,741	2,005	1,635	3,640	12,381
1974-75	8,325	893	9,218	1,861	1,670	3,531	12,749
1975-76	8,749	1,095	9,844	1,881	1,820	3,701	13,545
1976-77	8,792	1,107	9,899	1,880	1,833	3,713	13,612
1977-78	9,066	1,221	10,287	1,837	1,844	3,681	13,968
1978-79	8,846	1,339	10,185	1,911	1,817	3,728	13,913
1979-80	8,842	1,480	10,322	1,845	1,810	3,655	13,977
1980-81	9,090	1,677	10,767	1,919	1,759	3,678	14,445

\*Includes full-time students in Evening College.

Source: Registrar

**UNDERGRADUATE DAY AND EVENING  
AND  
GRADUATE ENROLLMENT**

Year	Undergraduate			Graduate/ Professional	Total
	Day	Evening	Total		
1971-72	6,640	1,101	7,741	3,370	11,111
1972-73	7,313	1,173	8,486	3,301	11,787
1973-74	7,543	1,198	8,741	3,640	12,381
1974-75	8,024	1,194	9,218	3,531	12,749
1975-76	8,463	1,381	9,844	3,701	13,545
1976-77	8,486	1,413	9,899	3,713	13,612
1977-78	8,705	1,582	10,287	3,681	13,968
1978-79	8,483	1,702	10,185	3,728	13,913
1979-80	8,474	1,848	10,322	3,655	13,977
1980-81	8,729	2,038	10,767	3,678	14,445

Source: Registrar

NOTE: All enrollment statistics are as of Oct. 8, 1980. Enrollment figures fluctuate throughout the year as a result of withdrawals, transfers, and mid-year graduations.

**UNDERGRADUATE ENROLLMENT  
BY SCHOOL**

Year	A&S	SOM	Education	Nursing	Evening	Total
1971-72	3,145	1,641	1,284	570	1,101	7,741
1972-73	3,589	1,663	1,344	717	1,173	8,486
1973-74	3,864	1,657	1,266	756	1,198	8,741
1974-75	4,284	1,724	1,263	753	1,194	9,218
1975-76	4,651	1,947	1,150	715	1,381	9,844
1976-77	4,848	1,911	1,021	706	1,413	9,899
1977-78	5,013	2,010	926	756	1,582	10,287
1978-79	4,826	2,076	812	769	1,702	10,185
1979-80	4,839	2,159	753	723	1,848	10,322
1980-81	5,022	2,261	765	681	2,038	10,767

Source: Registrar

**GRADUATE ENROLLMENT BY SCHOOL**

Year	A&S*	SOM	Social Work	Law	Total
1971-72	2,107	288	244	731	3,370
1972-73	2,048	317	228	708	3,301
1973-74	2,388	320	244	688	3,640
1974-75	2,245	319	257	710	3,531
1975-76	2,302	398	267	734	3,701
1976-77	2,255	446	258	754	3,713
1977-78	2,187	493	243	758	3,681
1978-79	2,157	503	271	797	3,728
1979-80	2,129	489	252	785	3,655
1980-81	2,124	496	280	778	3,678

\*Includes Graduate Education and Nursing.

Source: Registrar

**GRADUATE ENROLLMENT\***  
**BY DEGREE PROGRAM AND DISCIPLINE**  
**FULL- AND PART-TIME**

	1977-78		1978-79		1979-80		1980-81	
	Masters	Ph.D.	Masters	Ph.D.	Masters	Ph.D.	Masters	Ph.D.
American Studies	18	1	26	1	25	1	21	1
A&S Unspecified	113	6	226	18	311	9	15	3
Biology	57	21	40	22	43	22	44	17
Chemistry	17	22	23	21	20	19	23	25
Classics	6	-	5	-	9	-	9	-
Economics	8	86	5	76	8	70	13	65
Education	1,092	428	958	457	885	521	795	471
English	89	23	91	21	81	22	76	20
French	32	18	26	17	25	17	29	12
Geology	12	-	13	-	12	-	16	-
Geology-Geophysics	27	-	34	-	31	-	30	-
Geophysics	9	-	9	-	4	-	6	-
Germanic Studies	1	1	-	-	-	-	-	-
Greek	2	-	3	-	-	-	-	-
History	40	29	42	26	41	28	34	25
Interdisciplinary	1	5	2	8	2	6	3	14
Italian	5	-	5	-	5	-	5	-
Latin	-	-	1	-	1	-	3	-
Law	767	-	811	-	788	-	789	-
Linguistics	-	-	2	-	-	-	-	-
Management	547	-	552	-	544	-	588	-
Mathematics	17	-	17	-	16	-	13	-
Mathematics NSF	34	-	27	-	31	-	-	-
Nursing	114	-	107	1	121	-	123	-
Philosophy	32	44	27	40	33	45	40	45
Physics	10	12	11	19	6	21	8	23
Political Science	42	33	51	32	32	29	42	33
Psychology	12	45	13	45	7	49	2	41
Religious Education**	-	-	-	-	-	-	124	4
Russian	3	-	1	-	4	-	4	-
Slavic	7	-	2	-	3	-	3	-
Social Work	275	-	279	1	258	1	288	-
Sociology	32	33	27	38	28	47	40	48
Spanish	19	6	15	8	16	8	15	6
Theology	39	24	30	29	32	35	30	37
Total	3,479	837	3,481	880	3,422	950	3,231	890

\*Figures include students who attended for just one semester, as well as those who attended a full year.

\*\*Previously included in "A&S Unspecified" and "Education."

Source: Registrar

**UNDERGRADUATE AND GRADUATE ENROLLMENT  
BY SEX**

Year	Undergraduate		Graduate/ Professional		Total		Total Enrollment
	Men	Women	Men	Women	Men	Women	
1970-71	5,311	2,428	1,983	1,234	7,294	3,662	10,956
1971-72	5,019	2,722	2,029	1,341	7,048	4,063	11,111
1972-73	4,945	3,541	1,975	1,326	6,920	4,867	11,787
1973-74	4,700	4,041	2,022	1,618	6,722	5,659	12,381
1974-75	4,745	4,473	1,831	1,700	6,576	6,173	12,749
1975-76	4,779	5,065	1,908	1,793	6,687	6,858	13,545
1976-77	4,695	5,204	1,867	1,846	6,562	7,050	13,612
1977-78	4,850	5,437	1,802	1,879	6,652	7,316	13,968
1978-79	4,625	5,560	1,783	1,945	6,408	7,505	13,913
1979-80	4,556	5,766	1,701	1,954	6,257	7,720	13,977
1980-81	4,603	6,164	1,642	2,036	6,245	8,200	14,445

Source: Registrar

**FULL-TIME EQUIVALENT ENROLLMENT\***

Year	Undergraduate			Graduate/ Professional	Total
	Day	Evening	Total		
1970-71	6,663	491	7,154	2,464	9,618
1971-72	6,640	638	7,278	2,545	9,823
1972-73	7,313	637	7,950	2,378	10,328
1973-74	7,543	578	8,121	2,550	10,671
1974-75	8,024	614	8,638	2,418	11,056
1975-76	8,463	651	9,114	2,486	11,600
1976-77	8,486	675	9,161	2,491	11,652
1977-78	8,705	768	9,473	2,440	11,913
1978-79	8,483	809	9,292	2,516	11,808
1979-80	8,474	861	9,335	2,448	11,783
1980-81	8,729	920	9,649	2,505	12,154

\*Method of computation: three part-time students equal one full-time equivalent student.

Source: Registrar



### EVENING COLLEGE ENROLLMENT

Year	Full-Time		Part-Time		Total		Total
	Men	Women	Men	Women	Men	Women	
Fall 1975-76	180	106	427	668	607	774	1,381
Spring 1975-76	163	97	327	507	490	604	1,094
Fall 1976-77	188	118	397	710	585	828	1,413
Spring 1976-77	181	117	326	542	507	659	1,166
Fall 1977-78	224	137	449	772	673	909	1,582
Spring 1977-78	204	153	391	618	595	771	1,366
Fall 1978-79	222	141	510	829	732	970	1,702
Spring 1978-79	165	114	426	707	591	821	1,412
Fall 1979-80	201	167	550	930	751	1,097	1,848
Spring 1979-80	173	133	449	761	622	894	1,516
Fall 1980-81	200	161	587	1,090	787	1,251	2,038
Spring 1980-81	154	142	494	788	648	930	1,578

Source: Registrar

### SUMMER SESSION ENROLLMENT

Summer	Undergraduate	Graduate/ Professional*	Total
1974	692	1,830	2,522
1975	889	1,876	2,765
1976	887	1,732	2,619
1977	898	1,714	2,612
1978	924	1,679	2,603
1979	1,068	1,590	2,658
1980	1,122	1,700	2,822
1981	1,136	1,759	2,895

\*Includes students registered through Institute of Religious Education, and Graduate School of Management.

Source: Summer Session Office

**GEOGRAPHIC DISTRIBUTION OF STUDENTS\***  
**(GRADUATE AND UNDERGRADUATE)**  
**FALL 1981**

	Undergrad.	Evening	Grad. A&S	Social Work	Grad. SOM	Law School	Total
Alabama	1	-	-	-	-	-	1
Arkansas	2	-	-	-	-	1	3
Arizona	2	-	4	-	-	-	6
California	49	-	15	1	2	16	83
Colorado	6	-	3	1	-	-	10
Connecticut	952	24	45	7	8	28	1,064
D.C.	20	1	3	-	-	3	27
Delaware	20	-	2	-	-	2	24
Florida	65	3	3	1	1	9	82
Georgia	5	1	3	1	-	2	12
Hawaii	3	-	1	-	-	10	14
Idaho	1	-	-	-	-	-	1
Illinois	133	1	4	-	1	8	147
Indiana	9	-	1	-	-	4	14
Iowa	1	-	-	-	-	2	3
Kansas	4	-	1	-	1	-	6
Kentucky	6	-	2	-	-	-	8
Louisiana	4	-	2	-	-	1	7
Maine	104	2	12	4	2	1	125
Maryland	109	2	6	-	1	5	123
Massachusetts	4,269	1,927	1,705	225	435	449	9,010
Michigan	55	3	9	2	1	11	81
Minnesota	27	1	-	-	1	1	30
Mississippi	-	-	-	-	-	1	1
Missouri	17	-	3	1	-	1	22
Montana	1	-	2	-	-	1	4
Nebraska	5	-	2	-	-	1	8
Nevada	-	-	-	-	-	2	2
New Hampshire	130	11	47	2	6	19	215
New Jersey	734	6	31	1	7	35	814
New Mexico	4	-	-	1	-	1	6
New York	1,118	29	58	9	10	100	1,324
North Carolina	1	-	-	-	-	2	3
Ohio	74	3	7	1	1	10	96
Oklahoma	1	-	-	-	-	-	1
Oregon	3	-	-	-	-	-	3
Pennsylvania	219	9	29	1	2	10	270
Puerto Rico	(Included with foreign students)						
Rhode Island	282	8	36	13	4	18	361
South Carolina	3	-	-	1	-	-	4
Tennessee	1	-	-	-	-	2	3
Texas	11	-	7	-	1	2	21
Utah	1	1	-	1	-	-	3
Vermont	27	-	6	-	1	6	40
Virginia	41	1	9	3	-	4	58
Virgin Islands	(Included with foreign students)						
Washington	8	-	3	-	-	-	11
West Virginia	3	-	3	-	-	-	6
Wisconsin	25	-	3	1	-	3	32
Wyoming	1	-	-	-	-	-	1
Foreign	172	5	57	3	11	7	255
<b>Totals</b>	<b>8,729</b>	<b>2,038</b>	<b>2,124</b>	<b>280</b>	<b>496</b>	<b>778</b>	<b>14,445</b>

\*These figures are based on the state which the student lists as a permanent address, which may not necessarily reflect the true "home" state or country.

Source: Registrar

**INTERNATIONAL STUDENT STATISTICS  
FALL 1980**

**BY SCHOOL**

College of Arts & Sciences	49
School of Nursing	1
School of Management	36
School of Education	3
Evening College	2
Graduate School of Arts & Sciences	127
Graduate School of Social Work	8
Graduate School of Management	26
Law School	3
Sub-total	<u>255</u>
Practical Training (Field Work)	10
Post Doctoral Research Scholars	30
Total	<u>295</u>

*Source: Office of Student Programs & Resources*

**BY CLASS OR PROGRAM\***

Freshmen	35	
Sophomores	23	
Juniors	21	
Seniors	<u>10</u>	
Total Undergraduate		89
Graduate/Professional		
Masters	104	
Ph.D	50	
J.D.	3	
Special Students	<u>7</u>	
Total Graduate/Professional		164
Practical Training		10
Research Scholars		<u>30</u>
Total		<u>293</u>

\*Visiting students enrolled in the Evening College not included.

*Source: Office of Student Programs & Resources*

**BY SEX AND PROGRAM**

Program	Men	Women	Total
Undergraduate	51	40	91
Graduate	91	73	164
Practical Training	5	5	10
Research Scholars	<u>25</u>	<u>5</u>	<u>30</u>
Total	172	123	295

*Source: Office of Student Programs & Resources*

**INTERNATIONAL STUDENT ENROLLMENT  
BY COUNTRY**

Algeria	1	Jamaica	2
Argentina	1	Japan	13
Australia	13	Kenya	2
Austria	1	Korea	4
Bangladesh	3	Lebanon	3
Barbados	1	Lesotho	1
Belgium	2	Liberia	3
Bermuda	1	Libya	2
Bolivia	3	Malaysia	1
Brazil	2	Mexico	5
Canada	23	Morocco	1
Chile	6	Netherlands	5
Colombia	4	Nicaragua	4
Costa Rica	1	Nigeria	7
Ecuador	3	Panama	1
Egypt	9	People's Republic of China	10
El Salvador	3	Peru	2
Ethiopia	1	Philippines	4
Finland	1	Portugal	2
France	3	Republic of China (Taiwan)	10
Germany	8	Switzerland	2
Greece	6	Thailand	5
Guyana	1	Trinidad	2
Hong Kong	12	Turkey	4
Honduras	1	Uganda	2
India	17	United Kingdom	5
Indonesia	1	Venezuela	15
Iran	28	Zaire	2
Ireland	13		
Israel	3	Total Students	295
Italy	2		
Ivory Coast	2	Countries Represented	60

*Source: Office of Student Programs and Resources*

**UNDERGRADUATE AND GRADUATE  
MINORITY ENROLLMENT**

Undergraduate	1977-78			1978-79			1979-80			1980-81		
	Men	Women	Total	Men	Women	Total	Men	Women	Total	Men	Women	Total
Black	182	217	399	154	191	345	129	166	295	116	143	259
American Indian	3	7	10	5	8	13	6	4	10	5	4	9
Oriental	44	59	103	57	73	130	65	97	162	84	116	200
Hispanic	72	65	137	77	80	157	88	105	193	104	144	248
Other	21	14	35	30	13	43	42	38	80	53	53	106
	<u>322</u>	<u>362</u>	<u>684</u>	<u>323</u>	<u>365</u>	<u>688</u>	<u>330</u>	<u>410</u>	<u>740</u>	<u>362</u>	<u>460</u>	<u>822</u>
<b>Graduate</b>												
Black	43	74	117	34	79	113	48	47	95	47	57	104
American Indian	1	2	3	3	2	5	2	2	4	3	3	6
Oriental	17	34	51	28	37	65	36	30	66	49	48	97
Hispanic	20	30	50	18	32	50	29	25	54	29	34	63
Other	6	15	21	2	24	26	27	35	62	38	49	87
	<u>87</u>	<u>155</u>	<u>242</u>	<u>85</u>	<u>174</u>	<u>259</u>	<u>142</u>	<u>139</u>	<u>281</u>	<u>166</u>	<u>191</u>	<u>357</u>
Total Graduate and Undergraduate	409	517	926	408	539	947	472	549	1,021	528	651	1,179

Source: Registrar

**VETERANS ENROLLED AT BOSTON COLLEGE  
1980-81**

School	Men	Women	Full-Time	Part-Time	Total
Arts and Sciences	21	14	35	-	35
Education	2	7	8	1	9
Evening College	22	6	10	18	28
Nursing	-	6	6	-	6
Management	13	4	16	1	17
Graduate School of A&S	25	5	13	17	30
Graduate SOM	16	-	2	14	16
Law School	10	3	13	-	13
Social Work	4	1	3	2	5
Total	<u>113</u>	<u>46</u>	<u>106</u>	<u>53</u>	<u>159</u>

Source: Registrar

**UNDERGRADUATE DEGREES CONFERRED\*  
BY DEGREE AND NUMBER OF MAJORS**

	1976-77	1977-78	1978-79	1979-80	1980-81
<b>Arts and Sciences</b>					
<b>A.B.</b>					
Single Major	613	726	623	653	717
Double Major	239	277	303	308	259
Triple Major	<u>3</u>	<u>1</u>	<u>1</u>	<u>3</u>	<u>1</u>
	855	1,004	927	964	977
<b>B.S.</b>					
Single Major	146	162	134	168	140
Double Major	54	43	42	42	50
Triple Major	<u>-</u>	<u>1</u>	<u>-</u>	<u>-</u>	<u>1</u>
	200	206	176	210	191
Total A&S	1,055	1,210	1,103	1,174	1,168
<b>School of Education-A.B.</b>					
Single Major	273	119	60	174	194
Double Major	27	136	149	2	9
Triple Major	<u>2</u>	<u>-</u>	<u>6</u>	<u>-</u>	<u>-</u>
	302	255	215	176	203
<b>School of Management-B.S.</b>					
Single Major	413	396	433	386	444
Double Major	60	57	72	79	112
Triple Major	<u>-</u>	<u>-</u>	<u>1</u>	<u>-</u>	<u>-</u>
	473	453	506	465	556
<b>School of Nursing-B.S.</b>					
	168	175	197	201	177
Subtotal-Undergraduate Degrees	<u>1,998</u>	<u>2,093</u>	<u>2,021</u>	<u>2,016</u>	<u>2,104</u>
<b>Evening College</b>					
A.B.	63	70	93	93	97
B.S.	<u>2</u>	<u>-</u>	<u>-</u>	<u>-</u>	<u>-</u>
	65	70	93	93	97
Total Undergraduate Degrees Conferred	2,063	2,163	2,114	2,109	2,201

\*Sept.-Jan.-June  
Source: Registrar

**UNDERGRADUATE DEGREES CONFERRED  
BY MAJOR\***

	1976-77	1977-78	1978-79	1979-80	1980-81
Accounting	190	179	178	159	191
American Studies	-	2	3	-	1
Art History	14	15	12	5	1
Biology	151	154	131	156	144
Chemistry	32	29	25	29	32
Classics	5	1	2	3	1
Computer Science	12	12	33	49	69
Economics	89	120	155	204	204
English	157	149	129	175	182
Elementary Education	84	215	168	54	51
Finance	64	52	54	63	53
French	18	18	15	17	10
General Management	-	-	2	16	31
Geology	13	16	9	17	8
Geophysics	-	1	3	-	4
German	4	8	1	1	3
History	77	74	58	87	78
Human Development	-	-	1	2	26
Independent	3	-	-	2	1
Italian	-	2	-	1	2
Linguistics	1	4	1	1	2
Management	34	41	24	2	-
Marketing	161	157	173	163	184
Mathematics	39	58	35	42	48
Nursing	168	175	197	201	177
Operations Management	2	-	25	1	1
Organizational Studies/Human Resources Management	-	-	-	-	5
Philosophy	35	42	31	34	48
Physics	5	7	8	8	3
Political Science	161	210	217	124	132
Psychology	120	136	126	122	106
Romance Languages	1	7	3	5	4
Russian	4	2	3	2	3
Secondary Education	47	25	18	16	28
Slavic Studies	1	2	4	2	1
Sociology	88	97	98	54	80
Spanish	13	12	10	15	8
Special Education/Alternative Environments	-	-	-	15	11
Special Education/Elementary Education**	160	-	12	81	81
Speech Communication	26	50	42	64	64
Speech Theatre	3	5	1	3	2
Studio Art	9	11	10	13	19
Theology	7	5	3	8	5
Third World Studies	-	-	1	-	-
Total***	1,998	2,093	2,021	2,016	2,104

\*Double and Triple majors counted by first major.

\*\*Elementary Education majors with concentration in Special Education.

\*\*\*Evening College majors are not included in this total.

Source: Registrar

**UNDERGRADUATE DEGREES CONFERRED  
BY SCHOOL AND BY MAJOR**

	1979					1980					1981							
	A.&S. A.B.	B.S.	Ed. A.B.	SOM B.S.	Nurs. B.S.	Total	A.&S. A.B.	B.S.	Ed. A.B.	SOM B.S.	Nurs. B.S.	Total	A.&S. A.B.	B.S.	Ed. A.B.	SOM B.S.	Nurs. B.S.	Total
Accounting				178		178				159		159				191		191
American Studies	3				3	3							1					1
Art History	12					12	5					5	1					1
Biology		131				131		156				156		144				144
Chemistry		25				25		29				29		32				32
Classics	2					2	3					3	1					1
Computer Science				33		33				49		49				69		69
Economics	36			119		155	192			12		204	181		1	22		204
English	129					129	171		4			175	180		2			182
Elementary Education			168			168			54			54			51			51
Finance				54		54				63		63				53		53
French	15					15	17					17	10					10
General Management				2		2				16		16				31		31
Geology		9				9		17				17		8				8
Geophysics		3				3						-		4				4
German	1					1	1					1	3					3
History	58					58	86		1			87	78					78
Human Development			1			1			2			2			26			26
Independent						-	2					2	1					1
Italian						-	1					1	2					2
Linguistics	1					1	1					1	2					2
Management				24		24				2		2						2
Marketing				173		173				163		163			184			184
Mathematics	35					35	42					42	48					48
Nursing					197	197					201	201					177	177
Operations Management				25		25			1			1			1			1
Org. Studies/Human Resources Mgmt.															5			5
Philosophy	31					31	34					34	48					48
Physics		8				8		8				8		3				3
Political Science	217					217	124					124	132					132
Psychology	126					126	122					122	106					106
Romance Languages	3					3	5					5	4					4
Russian	3					3	2					2	3					3
Secondary Education			18			18	1		15			16			28			28
Slavic Studies	4					4	2					2	1					1
Sociology	98					98	52		2			54	79		1			80
Spanish	10					10	15					15	8					8
Sp. Ed/Alternative Environments									15			15			11			11
Sp. Ed/Elementary Education			12			12			81			81			81			81
Speech Communication	42					42	62		2			64	63		1			64
Speech Theatre	1					1	3					3	2					2
Studio Art	10					10	13					13	19					19
Theology	3					3	8					8	4		1			5
Third World Studies	1					1						-						-
<b>Total*</b>	<b>841</b>	<b>176</b>	<b>199</b>	<b>608</b>	<b>197</b>	<b>2,021</b>	<b>964</b>	<b>210</b>	<b>176</b>	<b>465</b>	<b>201</b>	<b>2,016</b>	<b>977</b>	<b>191</b>	<b>203</b>	<b>556</b>	<b>177</b>	<b>2,104</b>

\*Evening College majors are not included in this total.

Source: Registrar



**UNDERGRADUATE AND GRADUATE DEGREES CONFERRED\*  
BY DEGREE AND BY SEX**

	1977-78			1978-79			1979-80			1980-81		
	Men	Women	Total	Men	Women	Total	Men	Women	Total	Men	Women	Total
<b>Undergraduate</b>												
College of A. & S.												
A.B.	492	512	1,004	454	473	927	463	501	964	460	517	977
B.S.	158	48	206	117	59	176	139	71	210	121	70	191
Total A. & S.	<u>650</u>	<u>560</u>	<u>1,210</u>	<u>571</u>	<u>532</u>	<u>1,103</u>	<u>602</u>	<u>572</u>	<u>1,174</u>	<u>581</u>	<u>587</u>	<u>1,168</u>
School of Ed. -A.B.	38	217	255	34	181	215	21	155	176	23	180	203
School of Nursing-B.S.	1	174	175	5	192	197	-	201	201	2	175	177
School of Management-B.S.	334	119	453	332	174	506	302	163	465	351	205	556
Subtotal Undergraduate	<u>1,023</u>	<u>1,070</u>	<u>2,093</u>	<u>942</u>	<u>1,079</u>	<u>2,021</u>	<u>925</u>	<u>1,091</u>	<u>2,016</u>	<u>957</u>	<u>1,147</u>	<u>2,104</u>
Evening College A.B.	41	29	70	54	39	93	52	41	93	45	52	97
Undergraduate Degrees Conferred	<u>1,064</u>	<u>1,099</u>	<u>2,163</u>	<u>996</u>	<u>1,118</u>	<u>2,114</u>	<u>977</u>	<u>1,132</u>	<u>2,109</u>	<u>1,002</u>	<u>1,199</u>	<u>2,201</u>
<b>Graduate</b>												
Ph.D.	44	26	70	44	19	63	45	25	70	52	37	89
D.Ed.	7	4	11	6	8	14	9	4	13	8	1	9
M.A.	61	58	119	43	56	99	57	78	135	59	88	147
M.S.	14	85	99	14	93	107	16	89	105	20	106	126
M.Ed.	52	219	271	67	215	282	31	175	206	53	160	213
M.A.T.	10	10	20	7	6	13	4	8	12	2	3	5
M.S.T.	5	4	9	5	5	10	3	7	10	-	5	5
J.D.	167	64	231	164	81	245	181	82	263	190	78	268
M.B.A.	38	72	110	56	62	118	83	53	136	73	71	144
M.S.P.	9	9	18	7	1	8	-	4	4	-	-	-
M.S.W.	62	24	86	23	91	114	35	89	124	22	72	94
C.A.E.S.	10	20	30	13	19	32	6	19	25	14	16	30
Total Graduate Degrees Conferred	<u>479</u>	<u>595</u>	<u>1,074</u>	<u>449</u>	<u>656</u>	<u>1,105</u>	<u>470</u>	<u>633</u>	<u>1,103</u>	<u>493</u>	<u>637</u>	<u>1,130</u>
Total Undergraduate Degrees Conferred	<u>1,064</u>	<u>1,099</u>	<u>2,163</u>	<u>996</u>	<u>1,118</u>	<u>2,114</u>	<u>977</u>	<u>1,132</u>	<u>2,109</u>	<u>1,002</u>	<u>1,199</u>	<u>2,201</u>
Total Undergraduate and Graduate Degrees**	<u>1,543</u>	<u>1,694</u>	<u>3,237</u>	<u>1,445</u>	<u>1,774</u>	<u>3,219</u>	<u>1,447</u>	<u>1,765</u>	<u>3,212</u>	<u>1,495</u>	<u>1,836</u>	<u>3,331</u>

\*Sept.-Jan.-June  
 \*\*See page 79 "Degrees Conferred by Boston College."  
 Source: Registrar

**HEALTH SERVICES  
NUMBER OF STUDENTS SERVED**

Grand Totals	1976-77	1977-78	1978-79	1979-80	1980-81
Total Visits to M.D.	18,718	17,949	18,061	17,980	19,868
Total Visits to Nurse Practitioner	—	—	269	1,552	1,648
Total Visits to R.N.	10,143	10,158	8,523	7,427	7,599
Total	<u>28,861</u>	<u>28,107</u>	<u>26,853</u>	<u>26,959</u>	<u>29,115</u>
<b>Infirmery*</b>					
Total Admissions	633	546	587	572	704
Men	(280)	(256)	(242)	(286)	(276)
Women	(353)	(290)	(345)	(286)	(428)
Total Patient Days	1,382	1,223	1,360	1,396	1,520
Average Daily Census	6.5	5.8	6.4	6.5	6.6
Average Length of Stay (days)	2.2	2.2	2.3	2.4	2.0
Number of Days in Full Operation	211	210	210	212	217.5

\*Included in Grand Totals

Source: Health Services Office

**UNDERGRADUATE AND GRADUATE FINANCIAL AID  
1977-81  
NUMBER OF STUDENTS**

	1977-78	1978-79	1979-80	1980-81
<b>Type of Aid – Undergraduate</b>				
University Scholarships and Grants <sup>1</sup>	2,214	2,861	3,294	3,764
State Scholarships <sup>2</sup>	1,021	1,409	1,418	1,600
Basic Educational Opportunity Grants <sup>3</sup>	1,147	1,235	2,321	2,332
Supplemental Educational Opportunity Grants <sup>4</sup>	790	889	1,262	1,449
Work-Study	1,231	1,211	1,490	1,450
National Direct Student Loans <sup>5</sup>	2,308	2,453	2,639	3,124
Undergraduate Total <sup>6</sup>	<u>8,711</u>	<u>10,058</u>	<u>12,424</u>	<u>13,719</u>
<b>Type of Aid – Graduate</b>				
Work-Study	282	306	289	255
National Direct Student Loans <sup>5</sup>	345	371	356	324
Total Undergraduate and Graduate <sup>6</sup>	<u>9,338</u>	<u>10,735</u>	<u>13,069</u>	<u>14,298</u>

<sup>1</sup>This statistic includes regular university scholarships and grants (through the operating budget), faculty kin tuition remission, minority scholarships, athletic grants, Jesuit Reduction, Alumni Association Scholarships, and endowed monies for scholarships.

<sup>2</sup>State scholarship funds to students from Massachusetts, Vermont, Connecticut, New Jersey, Pennsylvania, Rhode Island.

<sup>3</sup>Students who are enrolled at least half-time in an undergraduate degree program are eligible to apply for these grants. Grants are awarded to students with need, and eligibility is determined directly by the Federal Government.

<sup>4</sup>Available to students enrolled at least half-time in an undergraduate degree program. These grants are awarded to students with exceptional need and are termed "last resort." The amount of the award must be matched by an equal amount of other aid.

<sup>5</sup>Available to undergraduates and graduates enrolled at least half-time. These loan funds are obtained by Federal Government contributions, Boston College contributions and collections of previous loans awarded. The loans have up to a 10-year repayment period with an interest rate of 3% per year on the unpaid balance.

<sup>6</sup>This is a duplicated total since some students receive more than one type of aid.

Source: Financial Aid Office

**UNDERGRADUATE AND GRADUATE FINANCIAL AID  
1977-81  
THOUSANDS OF DOLLARS**

	1977-78	1978-79	1979-80	1980-81
<b>Type of Aid — Undergraduate</b>				
University Scholarships and Grants <sup>1</sup>	\$ 2,806	\$ 3,225	\$ 3,745	\$ 4,832
State Scholarships <sup>2</sup>	854	1,034	1,018	1,152
Basic Educational Opportunity Grants <sup>3</sup>	1,071	1,236	2,398	2,263
Supplemental Educational Opportunity Grants <sup>4</sup>	646	569	1,065	1,137
Work-Study <sup>5</sup>	1,463	1,476	1,698	1,815
National Direct Student Loans <sup>6</sup>	2,523	2,654	2,855	2,639
Undergraduate Total	<u>\$ 9,363</u>	<u>\$10,194</u>	<u>\$12,779</u>	<u>\$13,838</u>
<b>Type of Aid — Graduate</b>				
Work-Study <sup>5</sup>	345	380	400	454
National Direct Student Loans <sup>6</sup>	665	743	720	580
Total Undergraduate and Graduate	<u>\$10,373</u>	<u>\$11,317</u>	<u>\$13,899</u>	<u>\$14,872</u>

<sup>1</sup>This statistic includes regular university scholarships and grants (through the operating budget), faculty kin tuition remission, minority scholarships, athletic grants, Jesuit Reduction, Alumni Association Scholarships, and endowed monies for scholarships.

<sup>2</sup>State scholarship funds to students from Massachusetts, Vermont, Connecticut, New Jersey, Pennsylvania, Rhode Island.

<sup>3</sup>Students who are enrolled at least half-time in an undergraduate degree program are eligible to apply for these grants. Grants are awarded to students with need, and eligibility is determined directly by the Federal Government.

<sup>4</sup>Available to students enrolled at least half-time in an undergraduate degree program. These grants are awarded to students with exceptional need and are termed "last resort." The amount of the award must be matched by an equal amount of other aid.

<sup>5</sup>Gross work study wages for 1980-81 were \$2,269,000. The breakdown between graduates and undergraduates is estimated.

<sup>6</sup>Available to undergraduates enrolled at least half-time. These loan funds are obtained by Federal Government contributions, Boston College contributions and collections of previous loans awarded. The loans have up to a 10-year repayment period with an interest rate of 3% per year on the unpaid balance.

NOTE: In an effort to minimize statistical detail, the above data does not include Boston College graduate student assistance (approximately \$2,107,000 in 1980-81), administered by the various schools and departments. Also excluded are the Nursing Scholarship and Loan Programs (\$157,000 in 1980-81), a variety of government fellowships or scholarships from fraternal organizations and clubs (\$1,500,000 in 1980-81), and Higher Education Loans processed by the Financial Aid Office and disbursed by banks (\$17,538,000 in 1980-81), all of which are open to both undergraduate and graduate students. (In addition to these programs, the Student Employment Office placed 5,000 students in summer and term jobs both on and off campus.)

Source: Financial Aid Office.

## NOTES

# ALUMNI



## BOSTON COLLEGE ALUMNI CLUBS

Arizona	Mid-Hudson
Atlanta	Minnesota
Buffalo	New Hampshire
Cape Cod	New Jersey
Central New York	New Orleans
Chicago	North Shore
Cincinnati	Northern California (San Francisco)
Cleveland	Philadelphia
Dallas	Pittsburgh
Denver	Rhode Island
Detroit	Rochester
Fairfield County	St. Louis
Florida	San Diego
Hartford	Seattle
Houston	Toledo
Long Island	Washington, D.C.
Los Angeles	Western Massachusetts (Springfield)
Maine	Wisconsin
Manhattan Business Group	Worcester
Merrimack Valley	Young Alumni of New York City

*Source: Alumni Association*

## ALUMNI ASSOCIATION BOARD OF DIRECTORS With Committee Assignments 1981-82

<p>John P. Giuggio, '51 <i>President</i></p> <p>Richard D. Driscoll, '52 <i>Vice President; President Elect; Awards</i></p> <p>Raymond J. Kenney, '53, Law '58 <i>Treasurer; By-Laws</i></p> <p>Mary R. Marshall, NC '74 <i>Secretary; Women's Resource</i></p> <p>Edward T. Bigham, Law '53 <i>Law School Alumni Liaison</i></p> <p>Alan L. Butters, '67 <i>Admissions</i></p> <p>Donald P. Collins, EC '65 <i>Evening College Alumni Liaison; Nominations</i></p> <p>Thomas J. Condon, '74 <i>Clubs</i></p> <p>Roger T. Connor, '52 <i>Nominations</i></p> <p>John F. Doherty, '28 <i>Annual Fund</i></p> <p>Nancy Hebert Drago, '61, MBA '72 <i>M.B.A. Alumni Liaison</i></p> <p>John T. Driscoll, '49 <i>Nominations</i></p>	<p>Rev. John H. Flynn, '48 <i>By-Laws</i></p> <p>Mary Jane Liddell Gould, '67 <i>Classes</i></p> <p>Dennis M. Griffin, M.D., '67 <i>Nominations</i></p> <p>James Hardeman, SW '73 <i>Social Work Alumni Liaison</i></p> <p>Ellen Ennis Kane, '64 <i>Admissions</i></p> <p>Peter A. Kerr, '39 <i>Placement</i></p> <p>Paula M. Lyons, NC '67 <i>Continuing Education</i></p> <p>William Kevin McCarthy, '70 <i>Clubs</i></p> <p>Janet Chartier O'Hanley, '59 <i>Awards</i></p> <p>Edward F. Saunders, Jr., '71 <i>Student/Young Alumni</i></p> <p>Kathleen Redd Taylor, '72 <i>Minority Alumni</i></p> <p>William J. Thomas, '72 <i>Minority Alumni</i></p>
--	--

*Source: Alumni Association*

**ALUMNI  
COMPARATIVE REGIONAL ANALYSIS  
FALL 1981**

<b>Massachusetts</b>	
Metropolitan Boston	
Postal Areas 01701-02009	9,339
02101-02215	19,958
	<u>29,297</u>
Massachusetts Outside	
Metropolitan Boston	10,920
Total Massachusetts Alumni	40,217
<b>New England</b>	
Connecticut	3,703
Maine	778
New Hampshire	1,506
Rhode Island	1,604
Vermont	318
Total New England Outside Massachusetts	7,909
Massachusetts	40,217
Total New England	48,126
Total Outside New England	21,453
Lost Alumni	5,329
<b>Total Alumni</b>	<u>74,908</u>

*Source: Systems and Records, University Relations*

**ALUMNI  
GEOGRAPHIC ANALYSIS BY STATE  
FALL 1981**

Alabama	71	Maine	778	Puerto Rico	127
Alaska	36	Maryland	1,159	Rhode Island	1,604
Arizona	169	Massachusetts	40,217	South Carolina	67
Arkansas	17	Michigan	461	South Dakota	20
California*	1,875	Minnesota	200	Tennessee	100
Colorado	253	Mississippi	22	Texas	483
Connecticut	3,703	Missouri	209	Utah	32
Delaware	103	Montana	24	Vermont	318
District of Columbia	490	Nebraska	48	Virginia	1,175
Florida	989	Nevada	28	Virgin Islands	25
Georgia	268	New Hampshire	1,506	Washington	187
Guam	6	New Jersey	2,366	West Virginia	47
Hawaii	71	New Mexico	68	Wisconsin	220
Idaho	23	New York*	5,273	Wyoming	15
Illinois	896	North Carolina	245	Total U.S.	<u>68,668</u>
Indiana	174	North Dakota	12	Foreign Nations	911
Iowa	66	Ohio	724	Total Active Alumni	<u>69,579</u>
Kansas	65	Oklahoma	66	Lost Alumni	5,329
Kentucky	109	Oregon	95		
Louisiana	140	Pennsylvania	1,223	Total Alumni	<u>74,908</u>

\*California and New York include APO addresses.

*Source: Systems and Records, University Relations*

NOTE: Alumni totals include widows of alumni who have chosen to maintain their husbands' ties with Boston College. This number (620, FALL '81) is reflected in the male totals, with the spouse's respective class.

Also included are individuals who attended Boston College for at least one year without graduating. These alumni are referred to as "EX". Please note the last columns of pages 38-41 which list these alumni with their classes.

Double- and triple-degreed alumni are counted by their primary (or first-received) degree only.



**LIVING ALUMNI BY PRIMARY SCHOOL, SEX AND CLASS  
FALL 1981**

Class	A.&S.	Ed.	S.O.M.	S.O.N.	Evening College	Newton College	Grad. A.&S.	Grad. S.O.M.	Social Work	Law	Weston Theo.	EX Alumni	Total	Women	Men	Total	Class
1899	1												1		1	1	1899
1900	-											4	4		4	4	1900
1901	-											-	-		-	-	1901
1902	-											1	1		1	1	1902
1903	-											1	1		1	1	1903
1904	1											1	2		2	2	1904
1905	1											-	1		1	1	1905
1906	-											-	-		-	-	1906
1907	1											-	1		1	1	1907
1908	-											1	1		1	1	1908
1909	2											-	2		2	2	1909
1910	2											1	3		3	3	1910
1911	3											4	7		7	7	1911
1912	2											-	2		2	2	1912
1913	2						3					1	6		6	6	1913
1914	1						1					1	3		3	3	1914
1915	6						2					6	14		14	14	1915
1916	14						-					9	23		23	23	1916
1917	10						-					10	20		20	20	1917
1918	8						-					6	14		14	14	1918
1919	14						-					15	29		29	29	1919
1920	20						1					22	43		43	43	1920
1921	27						1					30	58		58	58	1921
1922	29						1					25	55		55	55	1922
1923	43						-					18	61		61	61	1923
1924	51						-				9	28	88		88	88	1924
1925	57						1				10	39	107		107	107	1925
1926	100				1		3				11	36	151		151	151	1926
1927	97				-		11				10	35	153	9	144	153	1927
1928	114				1		16				14	38	183	12	171	183	1928
1929	111				4		15				10	57	197	13	179	197	1929
1930	128				9		13				9	50	209	16	193	209	1930
1931	146				11		20				17	63	257	24	233	257	1931
1932	152				12		19			7	10	50	250	19	231	250	1932
1933	175				18		34			13	25	61	326	37	289	326	1933
1934	197				18		34			20	14	65	348	45	303	348	1934
1935	207				22		28			17	12	55	341	35	306	341	1935
1936	178				13		19			24	9	58	301	23	278	301	1936
1937	197				19		29			30	3	78	356	32	324	356	1937
1938	216				21		17		12	31	2	62	361	30	331	361	1938
1939	251				29		35		5	33	1	72	426	51	375	426	1939
1940	265				21		25		13	30	2	67	423	33	390	423	1940

**LIVING ALUMNI BY PRIMARY SCHOOL, SEX AND CLASS**  
(Continued)

Class	A.&S.	Ed.	S.O.M.	S.O.N.	Evening College	Newton College	Grad. A.&S.	Grad. S.O.M.	Social Work	Law	Weston Theo.	EX Alumni	Total	Women	Men	Total	Class
1941	219				41		20		16	24	2	46	368	46	322	368	1941
1942	217		48		33		33		11	15	1	68	426	50	376	426	1942
1943	228		47		20		13		13	19	2	83	425	38	387	425	1943
1944	174		54		13		6		11	6	1	85	350	26	324	350	1944
1945	106		21		16		15		9	6	1	213	387	37	350	387	1945
1946	14		2		23		24		18	12	3	51	147	51	96	147	1946
1947	142		25		23		34		24	28	3	50	329	51	278	329	1947
1948	175		75		20		39		26	50	2	10	397	64	333	397	1948
1949	419		102	27	34	-	61		29	76	1	30	779	126	653	779	1949
1950	853		319	38	27	34	68		27	89	3	58	1516	171	1345	1516	1950
1951	787		358	44	51	28	100		29	106	7	81	1591	201	1390	1591	1951
1952	488		308	73	57	30	63		25	94	1	47	1186	187	999	1186	1952
1953	421		263	81	54	40	119		36	68	1	41	1124	246	878	1124	1953
1954	350		236	116	66	20	141		29	56	2	74	1090	278	812	1090	1954
1955	295		202	127	73	38	122		26	49	3	48	983	293	690	983	1955
1956	306	139	293	124	78	37	126		29	61	5	98	1296	397	899	1296	1956
1957	330	101	257	132	63	47	107		29	64	4	111	1245	362	883	1245	1957
1958	378	135	362	175	68	61	141		26	59	3	168	1576	486	1090	1576	1958
1959	367	120	352	154	81	75	126		32	73	15	127	1522	443	1079	1522	1959
1960	329	130	349	205	136	100	202	2	35	64	18	56	1626	594	1032	1626	1960
1961	286	96	294	153	73	99	168	8	33	81	38	40	1369	483	886	1369	1961
1962	327	130	242	192	92	123	107	27	40	91	24	61	1456	567	889	1456	1962
1963	478	167	335	168	63	139	258	32	33	76	30	68	1847	667	1180	1847	1963
1964	483	187	365	135	81	188	220	27	46	82	34	67	1915	689	1226	1915	1964
1965	426	182	357	147	74	135	240	34	51	107	42	71	1866	637	1229	1866	1965
1966	445	184	350	218	67	158	265	42	53	114	36	59	1991	762	1229	1991	1966
1967	455	199	381	187	82	151	430	53	56	92	33	64	2183	827	1356	2183	1967
1968	551	281	421	142	69	187	377	49	52	118	28	70	2345	849	1496	2345	1968
1969	545	238	400	120	83	186	518	46	51	137	36	89	2449	938	1511	2449	1969
1970	535	234	355	145	97	207	487	102	60	115	-	79	2416	999	1417	2416	1970
1971	538	285	386	163	66	175	527	78	86	148	-	76	2528	1037	1491	2528	1971
1972	618	291	398	140	71	252	574	59	89	173	22	85	2772	1161	1611	2772	1972
1973	608	249	319	149	64	245	521	62	79	197	-	71	2564	1109	1455	2564	1973
1974	967	324	383	160	77	200	407	68	99	206	-	55	2946	1383	1563	2946	1974
1975	935	293	336	209	110	212	559	78	115	181	-	9	3037	1624	1413	3037	1975
1976	1160	367	493	227	79	5	590	74	101	206	-	4	3306	1716	1590	3306	1976
1977	1038	292	449	161	73	-	420	71	105	225	-	-	2834	1548	1286	2834	1977
1978	1209	257	454	169	91	-	485	77	93	194	-	3	3032	1554	1478	3032	1978
1979	1104	221	504	195	110	-	472	109	117	218	-	2	3052	1678	1374	3052	1979
1980	1184	170	473	199	95	-	478	118	121	233	-	-	3071	1706	1365	3071	1980
1981	1108	199	534	172	47	-	252	114	86	225	-	-	2737	1582	1155	2737	1981
Total	24427	5471	11902	4847	2840	3172	10243	1330	2076	4443	569	3588	74908	28047	46861	74908	Total

Source: Systems and Records, University Relations

**ALUMNI DONORS BY PRIMARY SCHOOL AND CLASS  
1980-1981**

Class	A.&S.	Ed.	S.O.M.	S.O.N.	Evening College	Newton College	Grad. A.&S.	Grad. S.O.M.	Social Work	Law	Weston Theo.	EX Alumni	Total Alumni Donors	Class
1899	1												1	1899
1900	-												-	1900
1901	-												-	1901
1902	-												-	1902
1903	-												-	1903
1904	-												-	1904
1905	-												-	1905
1906	-												-	1906
1907	-												-	1907
1908	-												-	1908
1909	-												-	1909
1910	-												-	1910
1911	-												-	1911
1912	-												-	1912
1913	-												-	1913
1914	1												1	1914
1915	2											1	3	1915
1916	7											-	7	1916
1917	1											2	3	1917
1918	3											1	4	1918
1919	6						-					2	8	1919
1920	8						1					-	9	1920
1921	11						-					4	15	1921
1922	14						-					2	16	1922
1923	18						-					5	23	1923
1924	22						-					2	24	1924
1925	19						-					8	27	1925
1926	51						-					6	57	1926
1927	39				-		1					3	43	1927
1928	70				-		1					8	79	1928
1929	62				-		2					5	69	1929
1930	66				1		-					2	69	1930
1931	102				3		3			-	-	13	121	1931
1932	68				-		2			1	1	4	76	1932
1933	60				3		-			4	-	5	72	1933
1934	87				3		7			4	-	6	107	1934
1935	67				4		3		-	3	-	4	81	1935
1936	74				2		1		-	6	-	5	88	1936
1937	81				4		4		-	3	-	8	100	1937
1938	59				6		2		3	9	-	2	81	1938
1939	113				6		4		1	7	-	11	142	1939
1940	101				8		3		3	4	-	5	124	1940

**ALUMNI DONORS BY PRIMARY SCHOOL AND CLASS**  
(Continued)

Class	A.&S.	Ed.	S.O.M.	S.O.N.	Evening College	Newton College	Grad. A.&S.	Grad. S.O.M.	Social Work	Law	Weston Theo.	EX Alumni	Total Alumni Donors	Class
1941	86		-		1		2		4	6		4	103	1941
1942	84		16		6		6		4	7		5	128	1942
1943	76		18		1		2		1	6		9	113	1943
1944	69		23		3		2		4	-		14	115	1944
1945	45		5		2		1		2	2		17	74	1945
1946	7		1		3		1		7	5		6	30	1946
1947	45		12		1		5		7	6		4	80	1947
1948	49		33		5		6		6	9		1	109	1948
1949	130		31	3	8		3		8	20		3	206	1949
1950	209		121	10	5		10		4	33		5	397	1950
1951	230		117	11	13		15		5	24		9	424	1951
1952	138		89	14	18		5		7	21		4	296	1952
1953	124	-	66	18	11	1	13		7	14		5	259	1953
1954	99	-	75	31	18	-	27		4	13		8	275	1954
1955	84	-	58	30	14	-	8		5	14		3	216	1955
1956	103	26	96	35	16	-	23		6	15		17	337	1956
1957	94	25	71	32	17	-	10	-	5	20		7	281	1957
1958	111	31	109	45	9	-	20	-	4	18		3	350	1958
1959	107	34	113	42	21	-	7	-	7	11		1	343	1959
1960	91	33	104	48	21	2	21	2	6	19		3	350	1960
1961	85	22	86	30	12	-	19	4	7	20	-	2	287	1961
1962	90	26	68	50	17	-	7	5	4	24	-	3	294	1962
1963	129	36	100	43	21	1	20	4	2	28	1	3	388	1963
1964	127	37	104	23	14	1	19	5	6	17	1	-	354	1964
1965	121	27	93	26	19	-	19	4	10	30	1	-	350	1965
1966	138	27	95	49	17	-	26	7	3	30	2	-	394	1966
1967	130	49	115	44	22	2	35	18	8	25	4	1	453	1967
1968	138	53	111	23	12	1	26	13	6	31	2	3	419	1968
1969	158	48	116	16	20	-	39	8	4	49	-	4	462	1969
1970	157	41	109	27	17	-	32	18	6	21	-	-	428	1970
1971	143	59	115	26	15	3	45	29	5	42	-	4	486	1971
1972	158	60	95	22	12	-	38	20	12	51	1	2	471	1972
1973	160	50	91	29	13	1	31	13	2	78	-	-	468	1973
1974	205	50	105	18	20	-	21	14	4	53	-	1	491	1974
1975	170	44	73	30	24	1	16	16	7	58	-	-	439	1975
1976	257	65	145	47	10	-	33	19	5	44	-	1	626	1976
1977	154	23	101	25	13	-	15	10	4	64	-	-	409	1977
1978	167	23	69	19	15	-	28	15	-	38	-	-	374	1978
1979	160	15	123	32	9	-	10	10	5	21	-	-	385	1979
1980	160	25	75	24	19	-	14	25	2	24	-	-	368	1980
1981	1	-	1	-	6	-	-	-	-	-	-	-	8	1981
Total	6202	929	3148	922	560	13	714	259	212	1052	13	266	14290	Total

Source: Systems and Records, University Relations

**NEW HEIGHTS ADVANCEMENT CAMPAIGN\***

Source	Campaign Goal	Campaign Pledges 1980-81	Campaign To Date Total Pledges 6/30/81
Alumni	\$10,200,000	\$1,898,039	\$10,897,216
Parents/Friends	2,200,000	452,339	2,178,780
Corporations	2,000,000	566,270	4,290,388
Foundations	2,000,000	324,576	2,891,506
Bequests/Estates	1,950,000	164,457	2,084,581
Jesuit Community Associations	2,000,000 700,000	275,000 16,571	2,185,118 866,168
<b>Total</b>	<b>\$21,050,000</b>	<b>\$3,697,252</b>	<b>\$25,393,757</b>

\*The five-year New Heights Advancement Campaign was officially completed in June, 1981.

Source: Office of Development

**INDIVIDUAL DONORS\*  
BY GIVING CLUB**

Giving Club	Level of Gift	1976-77	1977-78	1978-79	1979-80	1980-81
President's Circle	\$5,000+	(Established 1980-81)	-	-	-	91
FIDES	\$1,000-4,999	281	367	415	518**	595
Tower Builders	\$500-999	101	98	155	202	253
John Bapst Associates	\$250-499	(Established 1978-79)	-	244	406	529
McElroy Associates	\$100-249	2,127	2,130	2,002	2,295	2,650
Other Annual Fund	\$1-99	8,035	8,602	9,403	10,239	11,032
<b>Total Individual Donors</b>		<b>10,544</b>	<b>11,197</b>	<b>12,219</b>	<b>13,660</b>	<b>15,150</b>

\*Includes only alumni, parents and friends.

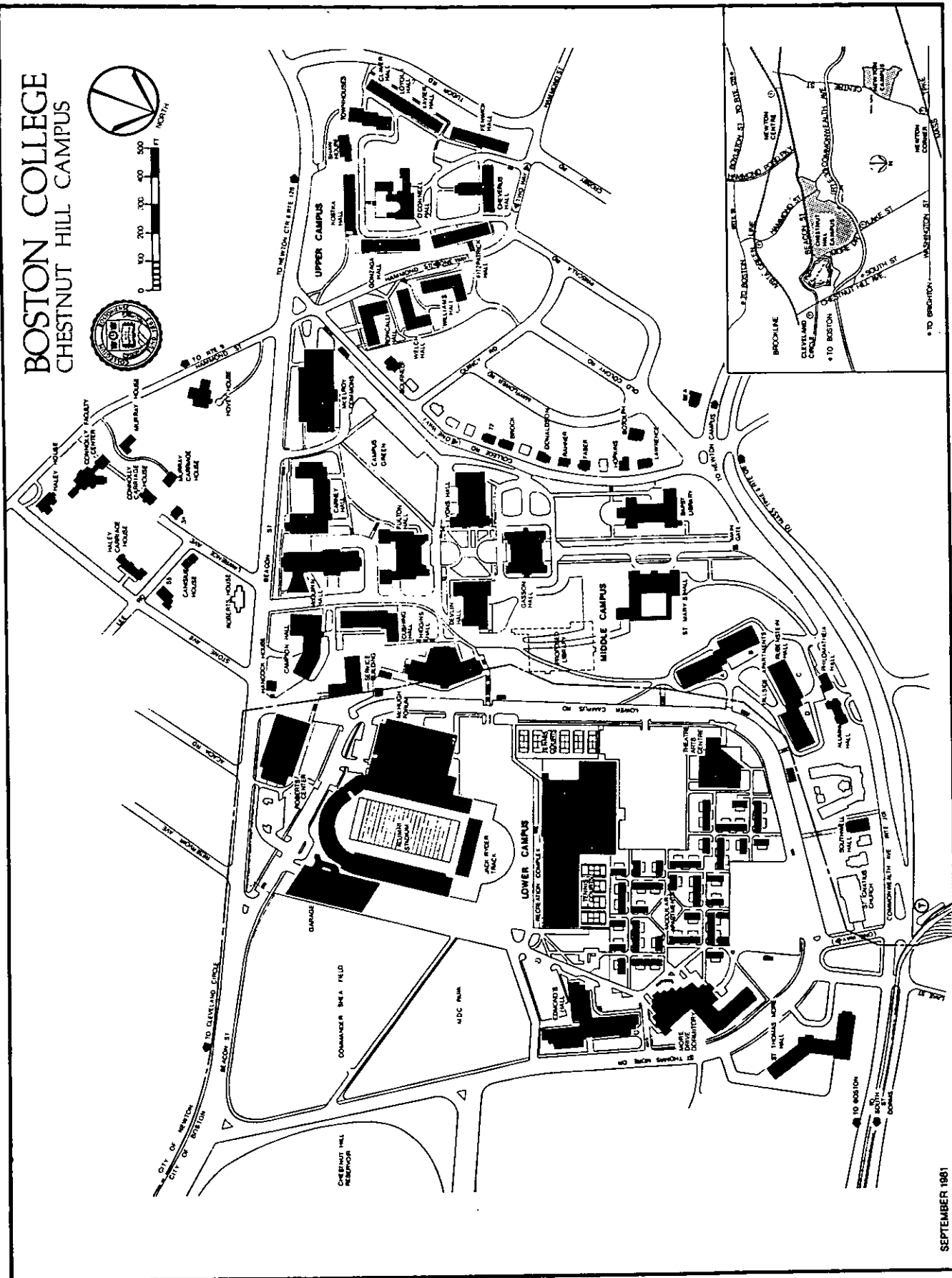
\*\*Includes individual donors to the Thomas P. O'Neill, Jr. Endowed Chair in Political Science.

Source: Office of Development

# PHYSICAL PLANT

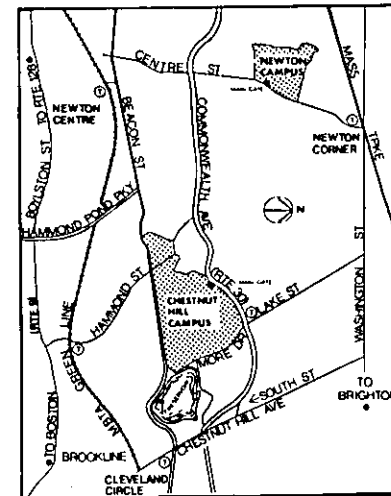
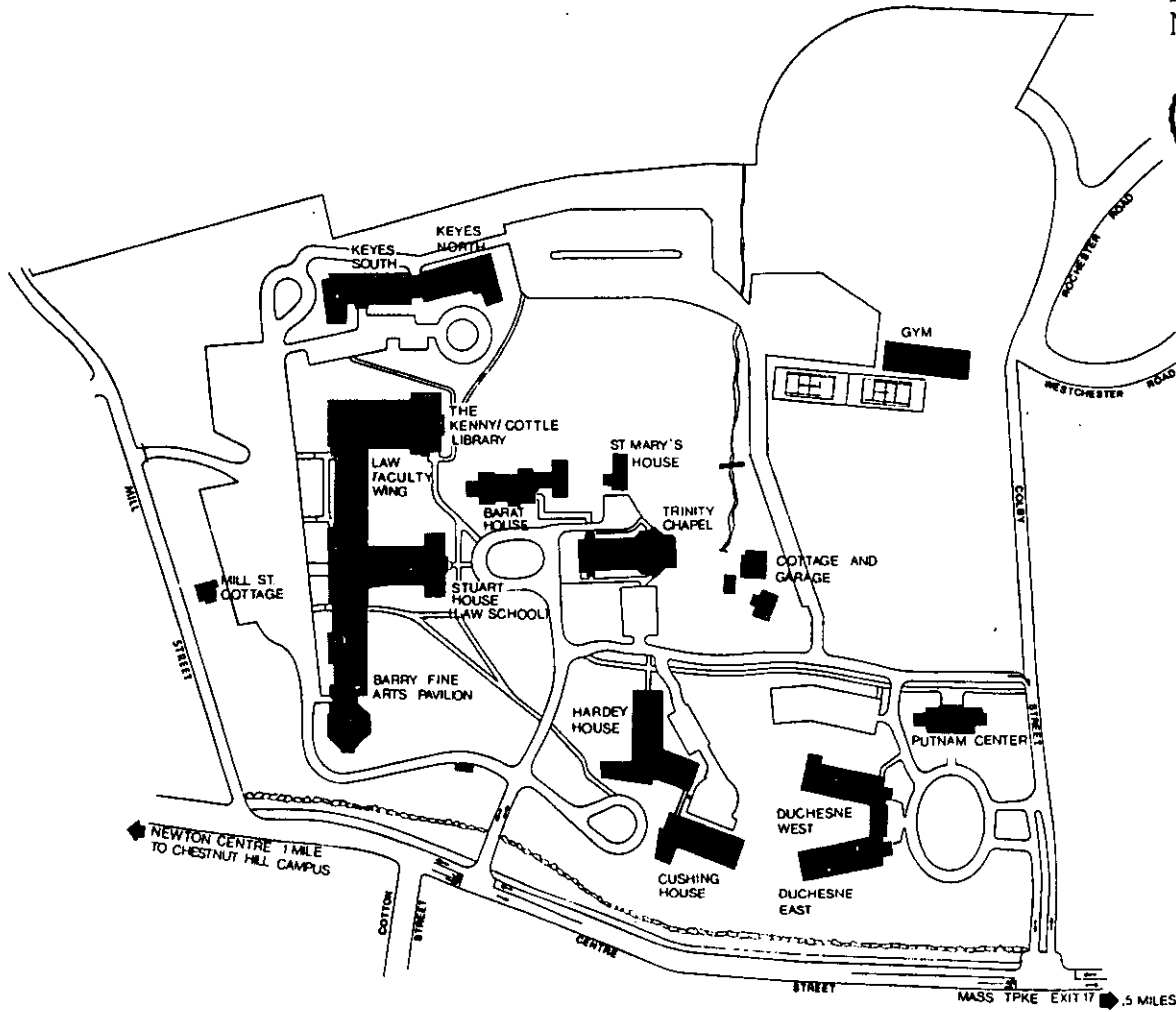
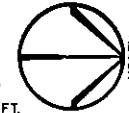
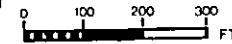


# BOSTON COLLEGE CHESTNUT HILL CAMPUS



SEPTEMBER 1981

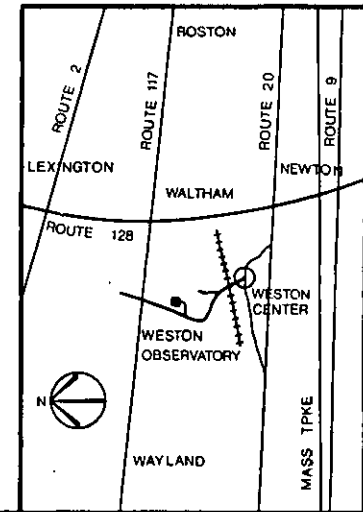
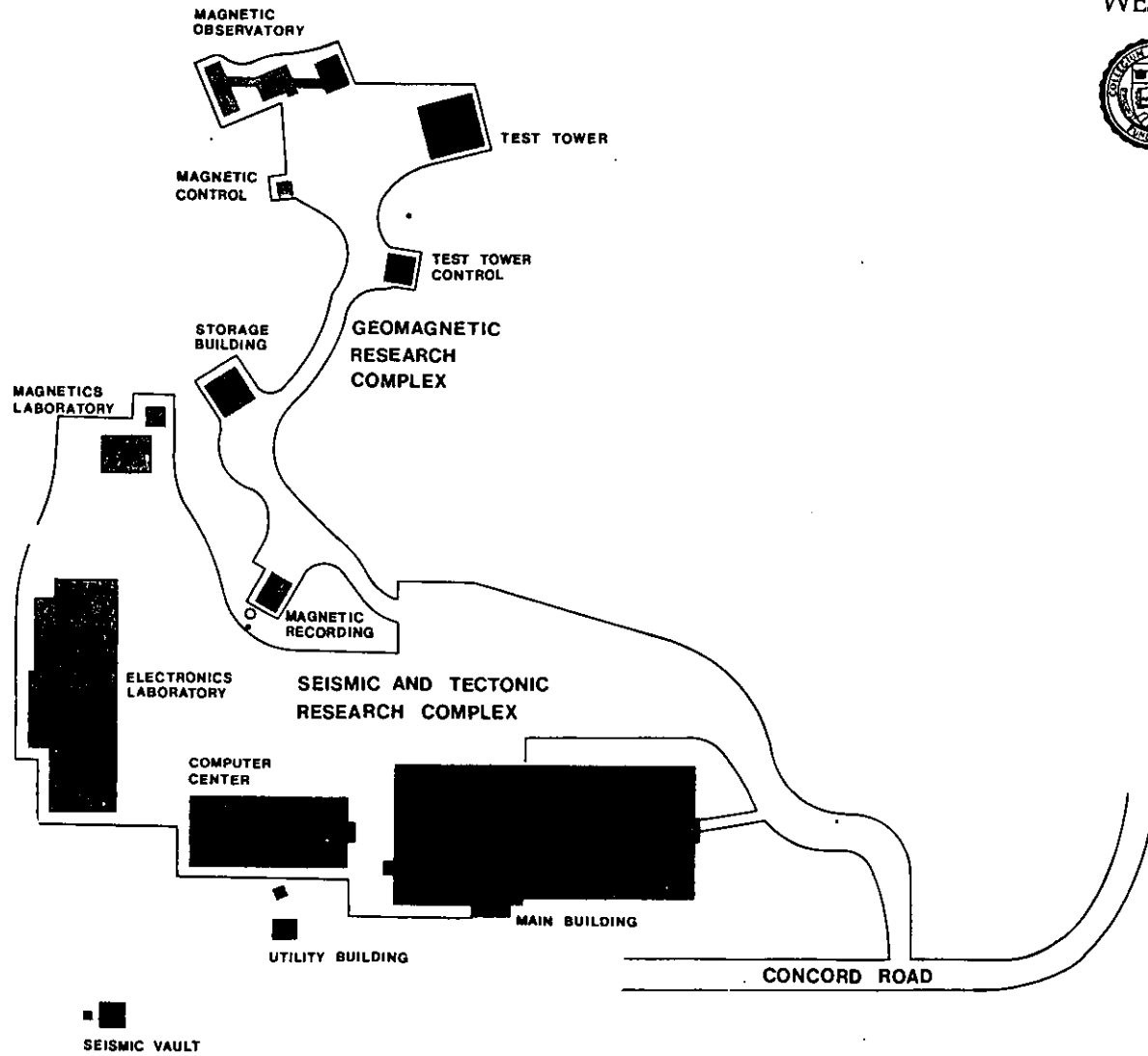
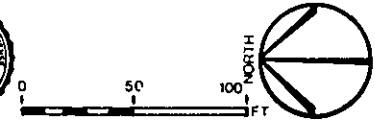
# BOSTON COLLEGE NEWTON CAMPUS



SEPTEMBER 1979



# BOSTON COLLEGE WESTON OBSERVATORY



**BOSTON COLLEGE PROPERTIES  
FALL 1981**

	Square Feet	Acres	Total Acres
<b>UPPER CAMPUS</b>			
Roncalli-Welch-Williams	137,446	3.1	
O'Connell and Upper Dorms	<u>472,838</u>	<u>10.9</u>	
<b>Total Upper Campus</b>	<b>610,284</b>		<b>14.0</b>
<b>MIDDLE CAMPUS</b>			
Area bounded by Beacon Street, Lower Campus Road, College Road, Commonwealth Avenue — including Hillside, Alumni, Philomatheia, Southwell			
	1,677,845	38.5	
18 Old Colony Road (Botolph)	17,346	0.4	
122 College Road (Lawrence)	9,579	0.2	
116 College Road (Hopkins)	7,349	0.2	
102 College Road (Faber)	7,191	0.2	
96 College Road (Rahner)	6,463	0.1	
90 College Road (Donaldson)	7,960	0.2	
78 College Road (Brock)	6,308	0.1	
72 College Road	7,100	0.2	
36 College Road (Bourneuf)	9,126	0.2	
176 Commonwealth (Bea)	<u>18,184</u>	<u>0.4</u>	
<b>Total Middle Campus</b>	<b>1,774,451</b>		<b>40.7</b>
<b>LOWER CAMPUS</b>			
Area bounded by Lower Campus Road, Beacon Street, and St. Thomas More Drive (excluding MDC property)			
	2,279,266	52.3	
2150 Commonwealth Avenue (St. Thomas More Hall)	<u>156,575</u>	<u>3.6</u>	
<b>Total Lower Campus</b>	<b>2,435,841</b>		<b>55.9</b>
<b>Total Upper, Middle and Lower Campuses</b>	<b>4,820,576</b>		<b>110.6</b>
<b>NEWTON CAMPUS</b>			
<b>Total Chestnut Hill and Newton Campuses</b>	<b>1,751,112</b>	<b>40.2</b>	
	<b>6,571,688</b>		<b>150.8</b>
<b>OUTLYING PROPERTIES</b>			
<b>Newton</b>			
258 Beacon Street (Hovey)	178,390	4.1	
292 Hammond Street (Murray)	50,554	1.2	
300 Hammond Street (Connolly)	70,767	1.6	
314 Hammond Street (Haley)	55,710	1.3	
31 Lawrence Avenue	13,109	0.3	
67 Lee Road (Canisius)	10,436	0.2	
55 Lee Road	<u>16,032</u>	<u>0.37</u>	
	<b>394,998</b>		<b>9.07</b>
<b>Boston</b>			
2051 Commonwealth (Greycliff)	<u>4,623</u>	0.1	
	<b>4,623</b>		<b>0.1</b>
<b>TOTAL PROPERTIES OWNED BY BOSTON COLLEGE</b>	<b>6,971,309</b>		<b>159.97</b>

NOTE: The above statistics do not include rented properties used in University operations.

Source: *Buildings and Grounds*

**BUILDINGS RELATED TO BOSTON COLLEGE OPERATIONS  
LOCATION AND PRIMARY USE  
FALL 1981**

Name	Location	Primary Use	Date Constructed or Acquired
Alumni Hall	74 Commonwealth Ave.	Administrative	1948
Alumni Stadium	Lower Campus	Sports	1957
Bapst Library	Middle Campus	Library	1928
Barat House	885 Centre St.	Jesuit Res. & Admin.	1974
Barry Fine Arts Pavilion	885 Centre St.	Academic & Admin.	1974
Bea House <sup>1</sup>	176 Commonwealth Ave.	Jesuit Residence	1965
Botolph House	18 Old Colony Road	Administrative	1967
Bourneuf House	36 College Road	Administrative	1974
Brock House	78 College Road	Administrative	1972
Campion Hall <sup>2</sup>	Middle Campus	Academic & Admin.	1955
Canisius House <sup>1</sup>	67 Lee Road	Jesuit Residence	1966
Carney Hall	Middle Campus	Academic & Admin.	1962
Cheverus Hall	127 Hammond St.	Student Residence	1960
Claver Hall	40 Tudor Road	Student Residence	1956
Connolly Faculty Center	300 Hammond St.	Academic	1975
Cottage and Garage	885 Centre St.	Residence	1974
Cushing Hall	Middle Campus	Academic & Admin.	1960
Cushing House	885 Centre St.	Student Residence	1974
Devlin Hall	Middle Campus	Academic & Admin.	1924
Donaldson House	90 College Road	Administrative	1975
Duchesne East	885 Centre St.	Student Residence	1974
Duchesne West	885 Centre St.	Student Residence	1974
Edmond's Hall	200 St. Thomas More Dr.	Student Residence	1975
Faber House <sup>1</sup>	102 College Road	Jesuit Residence	1938
Fenwick Hall	46 Tudor Road	Student Residence	1960
Fitzpatrick Hall	137 Hammond St.	Student Residence	1960
William J. Flynn Student Recreation Complex	Lower Campus	Sports & Admin.	1972
Fulton Hall	Middle Campus	Academic & Admin.	1948
Gasson Hall	Middle Campus	Academic & Admin.	1913
Gonzaga Hall	149 Hammond St.	Student Residence	1958
Greycliff Hall	2051 Commonwealth Ave.	Student Residence	1969
Gym (Newton)	885 Centre St.	Gymnasium	1974
Haley House	314 Hammond St.	Residence	1969
Hancock House	223 Beacon St.	Residence	1907
Hardey House	885 Centre St.	Student Residence	1974
Higgins Hall	Middle Campus	Academic & Admin.	1966
Hillside A	100 Commonwealth Ave.	Student Residence	1973
Hillside B	100 Commonwealth Ave.	Student Residence	1973
Hillside C (Renamed Rubenstein Hall)			
Hillside D	90 Commonwealth Ave.	Student Residence	1973
Hopkins House	116 College Road	Administrative	1968
Hovey House	258 Beacon St.	Academic	1971
Kenny-Cottle Library	885 Centre St.	Library	1974
Keyes North	885 Centre St.	Student Residence	1974
Keyes South	885 Centre St.	Student Residence	1974
Kostka Hall	149 Hammond St.	Student Residence	1958
Lawrence House	122 College Rd.	Administrative	1968
Law Faculty Wing	885 Centre St.	Academic & Admin.	1974
Loyola Hall	42 Tudor Rd.	Student Residence	1956
Lyons Hall	Middle Campus	Academic & Admin.	1951

McElroy Commons <sup>1</sup>	Middle Campus	Students Services & Admin.	1955
McGuinn Hall	Middle Campus	Academic & Admin.	1968
McHugh Forum	Lower Campus	Ice Skating Rink	1958
Mill Street Cottage	29 Mill Street	Residence	1974
Modular Apartments	Lower Campus	Student Residence	1971
More Drive Dormitory	150 St. Thomas More Dr.	Student Res. & Dining Facility	1980
Murray House	292 Hammond St.	Commuter Center	1967
O'Connell Hall	185 Hammond St.	Student Union	1938
Parking Garage	2599 Beacon St.	General Use Parking Facility	1979
Philomatheia Hall	86 Commonwealth Ave.	Academic & Admin.	1920
Putnam Center	885 Centre St.	Academic	1974
Rahner House	96 College Rd.	Academic	1952
Roberts Center	Middle Campus	Academic, Admin. & Gym	1958
Roncalli Hall	182 Hammond St.	Student Residence	1965
Rubenstein Hall	90 Commonwealth Ave.	Student Residence	1973
Service Building	Middle Campus	Admin. & Trade Shops	1948
Shaw House	377 Beacon St.	Student Residence	1962
Commander Shea Field	Lower Campus	Baseball Diamond	1960
Southwell Hall	38 Commonwealth Ave.	Administrative	1937
St. Mary's Hall <sup>4</sup>	Middle Campus	Jesuit Residence	1917
St. Mary's House	885 Centre St.	Academic & Admin.	1974
St. Thomas More Hall	St. Thomas More Dr.	Administrative	1955
Stuart House (Law School)	885 Centre St.	Academic & Admin.	1974
Theatre Arts Center	Lower Campus	Student Services & Academic	1981
Townhouse	60 Tudor Rd.	Student Residence	1971
Trinity Chapel (Newton)	885 Centre St.	Chapel	1974
Welch Hall	200 Hammond St.	Student Residence	1965
Weston Observatory <sup>5</sup>	Weston, MA	Research & Admin.	1948
Williams Hall	143 Hammond St.	Student Residence	1965
Xavier Hall	44 Tudor Rd.	Student Residence	1956
----	72 College Rd.	Jesuit Residence	1970
----	31 Lawrence Ave.	Academic	1979
----	55 Lee Road	Residence	1978

<sup>1</sup>Rented to Jesuit Community of Boston College.

<sup>2</sup>Academic & Administrative = classrooms and offices.

<sup>3</sup>Student Services in McElroy Commons include bookstore, dining halls, mail room, U.S. Post Office.

<sup>4</sup>Owned by the Jesuit Community of Boston College.

<sup>5</sup>Land rented from the New England Province of the Society of Jesus. Building owned by Boston College.

### SUMMARY OF BUILDING USE FALL 1981

Building Use	Number of Buildings
Student Residences <sup>1</sup>	23
Administrative	11
Academic and Administrative <sup>2</sup>	20
Jesuit Residences	6
Miscellaneous Use <sup>3</sup>	18
<b>TOTAL</b>	<b>78</b>

<sup>1</sup>Keyes North and South = 1, Duchesne East and West = 1, Hillside A&B = 1, Hillside C&D = 1, Modulars = 1

<sup>2</sup>Academic and Administrative = offices and classrooms. Also includes Weston Observatory.

<sup>3</sup>Includes gymnasiums, libraries, student union, etc.

Source: *Space Management*

**CLASSROOMS  
FALL 1981**

Building	Number of Classrooms	Stations
Barry	5	474
Campion	14	786
Carney	25	1,179
Cushing	11	842
Devlin	2	373
Fulton	13	1,047
Gasson	19	972
Higgins	8	657
Kenny-Cottle Library	1	125
Lyons	10	518
McGuinn	15	595
Stuart	8	572
Theatre Arts Center	1	20
<b>Total</b>	<b>132</b>	<b>8,160</b>

Source: Space Management

**DINING FACILITIES  
FALL 1981**

Name	Location	Capacity
Eagle's Nest Snack Bar	McElroy Commons	500
Faculty Dining Room	McElroy Commons	175
Lower Campus Dining Facility	More Drive Dormitory	650
Lyons Cafeteria	Lyons Hall	550
McElroy Dining Hall	McElroy Commons	1,000
Newton Campus Cafeteria	Stuart House	360
Newton Campus Snack Bar	Stuart House	200
Trustees' Room	McElroy Commons	40
<b>Total Capacity</b>		<b>3,475</b>

Source: Dining Department

**OFFICES  
FALL 1981**

CHESTNUT HILL		NEWTON CAMPUS	
Building	Number of Offices	Building	Number of Offices
Alumni Hall	8	Hopkins House	11
Bapst Library	8	Lawrence House	11
Botolph House	10	Lyons Hall	74
Bourneuf House	9	McElroy Commons	32
Brock House	7	McGuinn Hall	188
Campion Hall	56	Philomatheia Hall	7
Carney Hall	230	Roberts Center	24
Cushing Hall	55	Rubenstein Hall	12
Devlin Hall	40	Service Building	17
Donaldson House	7	Southwell Hall	26
Fulton Hall	83	St. Thomas More Hall	83
Gasson Hall	39	31 Lawrence Ave.	8
Higgins Hall	54		
Hovey House	8	<b>Subtotal</b>	<b>1,107</b>
		Barat House	9
		Barry Fine Arts Pavilion	25
		Law Faculty Wing	21
		Kenny-Cottle Library	8
		Stuart House	63
		St. Mary's House	5
		<b>Subtotal</b>	<b>131</b>
		Weston Observatory*	17
		<b>Total Offices</b>	<b>1,255</b>

\*In addition to 17 offices, Weston Observatory houses 12 laboratories.

Source: Space Management

**FACILITY CAPACITIES  
FALL 1981**

Facility	Location	Lecture Seating	Dinner Seating	Reception/ Standing
<b>Athletic</b>				
Alumni Stadium	Lower Campus			
Sporting Events		32,000	-	-
Field Seating		3,000	-	-
William J. Flynn Student Recreation Complex (New Wing)	Lower Campus	4,000	2,500	4,000
McHugh Forum	Lower Campus			
Sporting Events		4,000	-	-
Floor Seating		2,400	-	-
Roberts Center	Middle Campus			
Sporting Events		4,200	-	-
Floor Seating		800	550	-
<b>Auditoriums</b>				
Barry Fine Arts Pavilion 223	Newton Campus	330	-	-
Cushing Hall 001	Middle Campus	230	-	-
Devlin Hall 008	Middle Campus	320	-	-
Fulton Hall 412	Middle Campus	220	-	-
Gasson Hall 305	Middle Campus	104	-	-
Higgins Hall 304	Middle Campus	160	-	-
Higgins Hall 307	Middle Campus	160	-	-
McGuinn Hall 121	Middle Campus	275	-	-
Stuart Hall 411	Newton Campus	135	-	-
Stuart Hall 315	Newton Campus	180	-	-
Theatre Arts Center	Lower Campus	650	-	-
<b>Conference Rooms</b>				
Murray Conference Room	McElroy Commons	100	-	-
Putnam Center (2 Conference Rooms)	Newton Campus	25/room	-	-
Roberts Lounge	St. Thomas More Hall	30	-	75
Trustees Board Room	McElroy Commons	40	40	-
<b>Dining Halls*</b>				
Eagle's Nest	McElroy Commons	-	500	-
Faculty Dining Room	McElroy Commons	-	125	-
Lyons Cafeteria	Lyons Hall	-	500	-
McElroy Dining Hall	McElroy Commons	-	900	-
Newton Campus Cafeteria	Stuart House	-	250	-
Newton Campus Snack Bar	Stuart House	-	200	-
<b>Houses</b>				
Alumni Hall	74 Commonwealth Avenue	-	80	125
O'Connell Hall	185 Hammond Street	-	-	200
Philomatheia Hall	86 Commonwealth Avenue	-	80	125
<b>Lounges</b>				
Cushing Faculty Lounge	Middle Campus	-	60	100
McElroy Student Lounge	McElroy Commons	-	75	100
McGuinn 3rd Floor Lounge	Middle Campus	-	50	75
McGuinn 5th Floor Lounge	Middle Campus	-	50	75
<b>Multi-Purpose</b>				
Campion Auditorium	Middle Campus	300	-	-
Gasson T-100	Middle Campus	300	200	400
Newton Chapel	Newton Campus	500	-	-
Newton Chapel Basement	Newton Campus	400	250	-

\*Capacities shown for dining facilities are those used for function seating, and therefore differ from capacities for student dining.

Source: Bureau of Conferences

Note: University facilities are available for function purposes through the Bureau of Conference and/or the primary user responsible for the facility.

All facilities are not available to all groups. The capacity figures are those used by the Bureau of Conferences in determining appropriate space needs for functions being scheduled.

**RESIDENCE HALL STATISTICS  
1981-82**

		Living Units	Students	Staff*	Total
<b>CHESTNUT HILL</b>					
Upper Campus					
Cheverus	127 Hammond Street	68	135	3	138
Claver	40 Tudor Road	40	75	3	78
Fenwick	46 Tudor Road	74	142	3	145
Fitzpatrick	137 Hammond Street	73	141	3	144
Gonzaga	149 Hammond Street	80	154	3	157
Kostka	149 Hammond Street	81	159	3	162
Loyola	42 Tudor Road	52	101	2	103
Roncalli	182 Hammond Street	69	134	3	137
Shaw	377 Beacon Street	8	21	1	22
Townhouse	60 Tudor Road	51	98	2	100
Welch	200 Hammond Street	76	150	3	153
Williams	142 Hammond Street	72	138	3	141
Xavier	44 Tudor Road	40	78	2	80
		<u>784</u>	<u>1,526</u>	<u>34</u>	<u>1,560</u>
<b>LOWER CAMPUS</b>					
Edmond's Hall	200 St. Thomas More Drive	206	792	8	800
Hillside A	100 Commonwealth Avenue	36	210	3	213
Hillside B	100 Commonwealth Avenue	29	152	2	154
Hillside D	90 Commonwealth Avenue	24	188	2	190
Modulars	St. Thomas More Drive	86	498	9	507
More Drive Dormitory	150 St. Thomas More Drive	144	784	18	802
Rubenstein Hall	90 Commonwealth Avenue	42	174	3	177
		<u>567</u>	<u>2,798</u>	<u>45</u>	<u>2,843</u>
<b>NEWTON CAMPUS</b>					
Cushing	885 Centre Street	64	119	3	122
Duchesne East	885 Centre Street	64	132	3	135
Duchesne West	885 Centre Street	72	129	2	131
Hardey	885 Centre Street	96	174	3	177
Keyes North	885 Centre Street	74	140	5	145
Keyes South	885 Centre Street	57	105	3	108
		<u>427</u>	<u>799</u>	<u>19</u>	<u>818</u>
<b>OFF CAMPUS</b>					
Greycliff	2051 Commonwealth Avenue	25	38	2	40
Total		<u>1,803</u>	<u>5,161</u>	<u>100*</u>	<u>5,261</u>

\*Area Directors not included.

Source: Housing Office

# FINANCE





**HIGHLIGHTS OF FINANCIAL OPERATIONS  
FOR THE FIVE YEARS ENDED JUNE 30, 1981  
(DOLLARS IN MILLIONS)**

	1977	1978	1979	1980	1981
<b>Revenues</b>					
Tuition and Fees	\$36.1	\$39.6	\$41.9	\$46.2	\$53.6
Contracts and Grants	9.4	9.5	10.0	13.8	14.2
Organized Activities	1.5	1.8	1.4	1.7	2.3
Gifts, Investments and Other*	3.1	3.7	4.5	5.1	10.4
Auxiliary Enterprises	9.6	10.7	11.6	13.2	16.7
<b>Total Revenue</b>	<b>59.7</b>	<b>65.3</b>	<b>69.4</b>	<b>80.0</b>	<b>97.2</b>
<b>Expenditures and Transfers**</b>					
Instruction	22.3	23.4	25.1	27.9	30.7
Libraries	2.1	2.3	2.5	2.8	3.4
Sponsored Research	3.2	3.1	3.4	4.1	4.3
Student Services	2.6	2.7	3.0	3.2	3.6
Organized Activities	3.0	3.3	3.2	3.5	3.9
Plant Maintenance	4.1	4.8	4.9	5.9	7.5
General Administration	5.3	5.9	6.3	6.7	8.1
Student Aid/Loans	5.3	5.7	6.3	8.6	10.7
Auxiliary Enterprises	10.7	11.4	12.3	13.4	16.4
Other Transfers (Net)*	.9	2.6	2.3	3.6	8.5
<b>Total Expenditures and Transfers</b>	<b>\$59.5</b>	<b>\$65.2</b>	<b>\$69.3</b>	<b>\$79.7</b>	<b>\$97.1</b>

\*For fiscal years 1980 & 1981, Gifts and Other Transfers include gifts restricted to Endowments and Plant Funds; fiscal years 1977-79 have been restated to include similar gifts.

\*\*Beginning with the fiscal year 1977, a facilities use allowance consisting of depreciation and interest on long-term debt has been allocated to functional expenditures on the basis of building usage.

Source: Office of the Controller

**H.E.F.A. BOND ISSUES\***

Issue	Amount of Issue	Date of Issue	The Project
Series A	\$20,875,000	April 24, 1974	Edmond's Hall construction; refinancing of existing dormitory and recreational facilities.
Series B	15,800,000	October 20, 1976	Improvement, renovation, construction to existing facilities.
Series C	14,150,000	June 27, 1979	New Dormitory and Dining Hall; Parking Garage facility construction.
Series D	5,350,000	November 24, 1980	Theatre Arts Center construction; refinancing of central boiler facility.

\*\*The Massachusetts Health and Educational Facilities Authority is a body politic and corporate and a public instrumentality of The Commonwealth of Massachusetts . . . The purpose of the Authority is essentially to provide assistance for nonprofit institutions for higher education and nonprofit hospitals in the construction, financing and refinancing of projects to be undertaken in relation to programs for higher education and health care." — Official Statement, Boston College Issue, Series C

Source: Office of the Financial Vice President and Treasurer

**TUITION AND FEES  
FOR THE EIGHT YEARS ENDED JUNE 30, 1982**

	1975	1976	1977	1978	1979	1980	1981	1982
<b>Undergraduate Schools</b>								
Arts & Sciences, Education, Management, Nursing	\$2,800	\$2,950	\$3,175	\$3,420	\$3,645	\$3,980	\$4,530	\$5,180
Evening College (per course)	190	200	210	220	230	240	250	275
Summer Session (per credit hour)	70	70	75	75	80	88	96	106
<b>Graduate Schools</b>								
Arts & Sciences (per credit hour)	90	95	100	105	113	130	150	170
Law School	2,750	2,950	3,200	3,500	3,810	4,200	4,900	5,625
Management (per credit hour)	75	80	86	100	113	130	150	180
Social Work	2,750	2,900	3,125	3,380	3,645	3,980	4,600	5,260
MSW part-time (per credit hour)	-	-	-	-	-	110	130	150
DSW part-time (per credit hour)	-	-	-	-	-	130	150	170
<b>Room Charge Per Student</b>								
Upper Campus, South Street*	750	750	775	850	950	1,050	1,190	1,350
Modulars	850	900	950	1,050	1,150	1,250	1,450	1,640
Hillside-3 bedroom	950	950	975	1,050	1,150	1,250	1,450	1,640
Hillside-2 bedroom	1,000	1,000	1,025	1,100	1,200	1,300	1,490	1,680
Edmond's Hall (Reservoir)	-	1,000	1,025	1,100	1,200	1,300	1,490	1,680
Newton	-	750	775	850	950	1,050	1,190	1,350
Kilsyth	850	850	-	-	-	-	-	-
Cleveland Circle	750	750	775	-	-	-	-	-
Pine Manor, St. Gabriel's	-	-	-	-	950	1,050	-	-
More Drive Dormitory	-	-	-	-	-	-	1,330	1,500
Board Per Student	650	700	750	825	875	1,025	1,236	1,434
<b>Representative Fees</b>								
Laboratory (Science)	100	100	100	100	100	100	120	130
Undergraduate Government	20	20	24	24	24	24	24	30
Graduate Student Association	5	5	5	5	5	5	7	7
Health	60	60	70	70	70	80	91	97
Recreation	25	25	32	32	32	35	45	52

\*South Street properties sold in 1981.

Source: Office of the Controller

**BOSTON COLLEGE  
TUITION RESTATED IN 1967 DOLLARS**

Academic Year	Consumer Price Index*	Tuition in Absolute Dollars	Tuition in 1967 Dollars
1968/69	106.4	1,600	1,504
1969/70	112.9	2,000	1,771
1970/71	119.1	2,240	1,881
1971/72	123.1	2,500	2,031
1972/73	127.3	2,600	2,042
1973/74	138.5	2,650	1,913
1974/75	155.4	2,800	1,802
1975/76	166.3	2,950	1,774
1976/77	174.3	3,175	1,822
1977/78	186.1	3,420	1,838
1978/79	202.9	3,645	1,796
1979/80	229.9	3,980	1,731
1980/81	258.4	4,530	1,753
1981/82	285.5**	5,180	1,814

\*CPI measured at December 31st of academic year. Source: Department of Commerce Economic Indicators, July 1981.

\*\*Estimate

Source: Office of the Controller

**CONTRACTS AND GRANTS\*  
SOURCE AND APPLICATION OF FUNDING  
(THOUSANDS OF DOLLARS)**

	1977	1978	1979	1980	1981
<b>SOURCE</b>					
Federal Gov't.	\$7,997	\$8,409	\$ 8,757	\$11,958	\$12,662
State Gov't.	379	432	353	706	785
Local Gov't.	199	127	443	595	217
Non-Gov't.	837	555	464	475	534
Total	<u>\$9,412</u>	<u>\$9,523</u>	<u>\$10,017</u>	<u>\$13,734</u>	<u>\$14,198</u>
<b>APPLICATION</b>					
Sponsored Research	4,113	4,052	4,384	5,329	5,700
Other Sponsored Programs	2,221	2,287	2,207	3,124	3,169
Student Aid	3,078	3,184	3,426	5,281	5,329
Total	<u>\$9,412</u>	<u>\$9,523</u>	<u>\$10,017</u>	<u>\$13,734</u>	<u>\$14,198</u>

\*The amounts represent actual accounted expenditures for the referenced fiscal year. They are not reflective of awards made to the University for that year.

Source: Office of the Controller

**SUMMARY OF CONTRACT AND GRANT AWARDS\***  
**JULY 1, 1980 — JUNE 30, 1981**

	No. of Awards	Award Total
<b>Graduate School of Arts &amp; Sciences</b>		
Biology	4	\$ 228,000
Chemistry	18	850,000
Geology & Geophysics		
Weston Observatory	6	1,607,000
NECEP	1	161,000
Germanic Studies	1	15,000
History	3	76,000
Philosophy	1	125,000
Physics	5	558,000
Psychology	2	43,000
Romance Languages & Literature	1	6,000
Slavic and Eastern Languages	1	3,000
Social Welfare Research Institute	5	986,000
Sociology	2	211,000
Space Data Analysis Lab	5	2,781,000
Other	2	52,000
	<hr/>	<hr/>
Subtotal	57	7,702,000
<b>School of Education</b>		
General	4	208,000
Special Education	5	336,000
Campus School	5	683,000
	<hr/>	<hr/>
	14	1,227,000
Law School	3	93,000
School of Management	4	131,000
School of Nursing	6	999,000
School of Social Work	8	125,000
Miscellaneous	5	201,000
	<hr/>	<hr/>
TOTAL	97	\$10,478,000

\*The awards are those received by the University during the referenced fiscal year. The award total includes multiple-year awards which will be expended over varying lengths of time.

Source: Office of Research Administration

**SELECTED CONTRACT AND GRANT AWARDS\*  
1980-81**

Title	Source of Funding	Award (\$)
<b>BIOLOGY DEPARTMENT</b>		
Biochemistry of Insect Cuticle	National Institutes of Health	62,604
Control of Differentiation: Drosophila Chorion Genes	National Institutes of Health	106,727
<b>CHEMISTRY DEPARTMENT</b>		
Synthesis, Chemistry of Technetium Radiopharmaceuticals	National Cancer Institute	51,450
Chemiluminescence & Laser Induced Fluorescence of Boron Atom Reaction	U.S. Air Force	121,234
The Molecular Basis of Cellular Control Mechanisms	National Institute of General Medical Sciences	54,508
Synthesis of Streptolydigin its Congeners	National Institute of General Medical Sciences	81,197
Practical Synthesis of the Anticancer Drug Adriamycin	National Cancer Institute	110,596
Synthetic Utility of Metal- Stabilized Carbenium Ions	National Institute of General Medical Sciences	50,509
Probing Carcinogens' Active Sites by F-Substitution	National Cancer Institute	59,168
Exoergic Gas Phase Reactions of Boron and Carbon Atoms	National Science Foundation	59,952
<b>SCHOOL OF EDUCATION</b>		
District III/Boston College Collaborative	City of Boston	101,545
Minimum Competency Testing Project	McLeod Corporation	100,000
<b>DIVISION OF SPECIAL EDUCATION</b>		
Rehabilitation Teaching — Teachers of the Blind	U.S. Department of Education	84,410
Preparation of Teachers of Orientation & Mobility	DHHS-Office of Rehabilitation Services	167,131
Guidelines for Improving Communications with Visually Impaired Users of Rail Rapid Transit Systems	Department of Transportation	80,000
<b>CAMPUS SCHOOL</b>		
Campus School 1980-81	Mass-Local Towns	446,650
Support Staff Grant	U.S. Department of Education	58,600
Early Childhood Program	Mass-Local Towns	79,143
Summer School 1981	Mass-Local Towns	63,655
<b>GEOLOGY &amp; GEOPHYSICS DEPARTMENT — Weston Observatory</b>		
A Seismotectonic Study of New England and Adjacent Areas	Nuclear Regulatory Commission	350,000
A Study of Seismicity & Tectonics in New England	Nuclear Regulatory Commission	190,518
Conduct Geokinetic Environment Investigation	U.S. Air Force	1,054,170

Title	Source of Funding	Award (\$)
<b>HISTORY DEPARTMENT</b>		
Teachers' Institute in Boston History	National Endowment for the Humanities	58,842
<b>LAW SCHOOL</b>		
Law School Clinical Experience	U.S. Department of Education	71,128
<b>SCHOOL OF MANAGEMENT</b>		
Small Business Development Center	U.S. Small Business Administration/ University of Massachusetts	110,660
<b>SCHOOL OF NURSING</b>		
Professional Nurse Traineeship	DHHS-Division of Nursing	328,812
BCSN-HMS Program in Maternal-Child Health	DHHS-Public Health Service	170,000
Graduate Psychiatric-Mental Health Nursing Program	DHHS-National Institute of Mental Health	203,648
Psychiatric Nursing Program	DHHS-National Institute of Mental Health	127,635
Adult Primary Care Clinical Specialist	DHHS-Division of Nursing	165,580
<b>PHILOSOPHY DEPARTMENT</b>		
New Humanities Core Curriculum: Perspectives on Western Culture	National Endowment for the Humanities	125,121
<b>PHYSICS DEPARTMENT</b>		
Siple Low Light Level TV Experiment	National Science Foundation	136,843
Electron & Ion Distributions at High Latitudes	U.S. Air Force	337,948
<b>SOCIAL WELFARE RESEARCH INSTITUTE</b>		
Program Impact Study	DHHS	218,480
MRPIS-First Year Program	DHHS	601,755
Public Assistance Data Analysis Laboratory	DHHS	142,023
<b>SCHOOL OF SOCIAL WORK</b>		
Social Work-Community Mental Health	DHHS-National Institute of Mental Health	76,700
<b>SOCIOLOGY DEPARTMENT</b>		
Program in Social Economy and Social Policy	DHHS-National Institute of Mental Health	74,755
Professionals as Workers	DHHS-National Institute of Mental Health	135,725
<b>SPACE DATA ANALYSIS LABORATORY</b>		
Ionospheric Electron Density Profile & Related Studies	U.S. Air Force	443,921
Space Craft Charging	U.S. Air Force	1,071,073
Satellite Data Analysis	U.S. Air Force	1,186,789
<b>MISCELLANEOUS</b>		
Learning-to-Learn-Improving the Skills of the High Risk Students	U.S. Department of Education	140,595

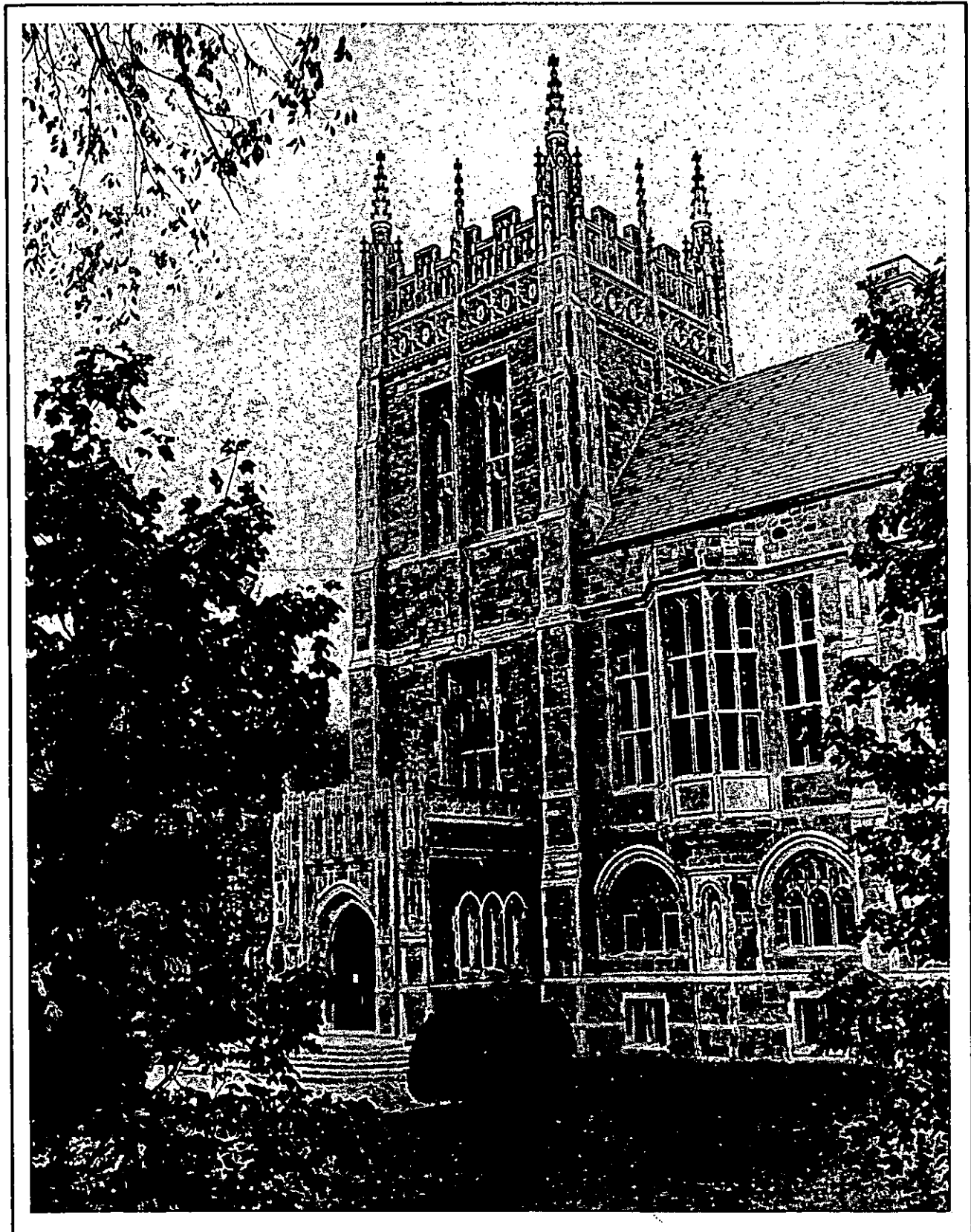
\*Selected awards are greater than \$50,000.

Source: Office of Research Administration

# NOTES

6'

# LIBRARIES





## BOSTON COLLEGE LIBRARIES

Bapst Library .....	Main Library, Middle Campus
Geophysics Library .....	Weston Observatory Weston, MA
Law Library .....	Kenny-Cottle Library Newton Campus
Resource Center (Undergraduate) .....	Kenny-Cottle Library Newton Campus
School of Management Library .....	Fulton Hall, 2nd Floor
School of Nursing Library .....	Cushing Hall, 4th Floor
School of Social Work Library .....	McGuinn Hall, Basement
Science Library .....	Devlin Hall, Rooms 103-108
Special Collections .....	More Hall, Rooms 215-216

Source: University Librarian

## EXPENDITURES FOR LIBRARY MATERIALS

Library	1976-77	1977-78	1978-79	1979-80	1980-81
Bapst	\$371,927	\$334,521	\$376,000	\$444,193	\$ 505,591
Law	108,801	112,084	125,000	143,384	208,994
Management	30,710	44,324	71,585	96,104	82,839
Nursing	25,090	24,380	33,000	39,101	44,090
Science	81,010	104,144	125,856	147,344	172,259
Social Work	7,650	10,142	12,350	14,602	16,717
<b>Total</b>	<b>\$625,188</b>	<b>\$639,595</b>	<b>\$743,791</b>	<b>\$884,728</b>	<b>\$1,030,490</b>

Source: Office of the Controller

## HOLDINGS BY INDIVIDUAL LIBRARIES — 1981

Library	Volumes	Periodical Subscriptions	Microform Units
Bapst	483,700	2,447	495,461
Law	132,591	685	106,632
School of Management	63,055	837	34,818
School of Nursing	35,824	642	26,547
Science	56,584	560	41,169
Weston	11,509	96	404
Social Work	28,424	322	486
Resource Center	23,146	17	-
Special Collections	39,000	-	-
<b>Total</b>	<b>873,833</b>	<b>5,606</b>	<b>705,517</b>

Source: University Librarian

## CIRCULATION STATISTICS

Year	Student	Faculty	Interlibrary Loans	Reserve	Total
1976-77	108,364	11,453	3,646	98,118	221,581
1977-78	78,609	12,406	3,420	113,107	207,542
1978-79	86,940	12,690	5,366	130,833	235,829
1979-80	96,876	13,333	7,901	152,369	270,479
1980-81	94,584	12,762	5,463	170,123	282,932

Source: University Librarian

## BOSTON COLLEGE LIBRARIES COMPUTER SEARCHES

The following data bases are available to the Boston College Community for customized computer literature searching. The computer search is an alternative to manual literature searching. It is recommended when a literature search involves several concepts or groups of concepts, or when limiting factors (e.g., type of publication, language) are introduced. Request forms and further information are available from the reference staff in each library.

### BIOMEDICINE

Excerpta Medica  
IPA (International Pharmaceutical Abstracts)  
MEDOC  
MEDLINE Data Bases  
AVLINE  
BIOETHICS  
CANCERLIT  
CANCERPROJ  
CATLINE  
CHEMLINE  
CLINPROT  
EPILEPSY  
HEALTH PLANNING  
HISTLINE  
MEDLINE AND BACKFILES  
POPLINE  
RTECS  
TOXICOLOGY DATA BANK  
TOXLINE AND TOXBACK

### BUSINESS AND ECONOMICS

Accountants Index  
ADSEARCH  
CBPI (Canadian Business Periodicals Index)  
CIN (Chemical Industry Notes)  
Disclosure  
Dow Jones News  
EIS Industrial Plants  
EIS Nonmanufacturing Establishments  
Foreign Traders Index  
Frost and Sullivan Defense Market Measures  
INFORM (Abstracted Business Information)  
International Economic Abstracts  
LABORDOC  
LABSTAT (Labor Statistics)  
Management Contents  
P/E News (Petroleum and Energy)  
PNI (Pharmaceutical News Index)  
Predicasts (Bibliographic)  
F&S Index  
International Forecasts

International Time Series  
PROMT  
U.S. Forecasts  
U.S. Time Series  
Predicasts (Computational)  
Standard and Poor's News  
Trade Opportunities  
U.S. Exports

### HUMANITIES AND SOCIAL SCIENCES

America: History and Life  
ARTBIBLIOGRAPHIES MODERN  
Bilingual Education and Bibliographic Abstracts  
Child Abuse and Neglect  
ECER (Exceptional Child Education Resources)  
ERIC (RIE, CIJE, AIM/ARM)  
Family Resources Database (National Council on Family Relations)  
Historical Abstracts  
Language and Language Behavior Abstracts  
Legal Resources Index  
LEXIS  
LISA (Library and Information Science Abstracts)  
MLA Bibliography  
NARIC (National Rehabilitation Information Center)  
NCJRS (National Criminal Justice Referral System)  
NICEM (National Information Center for Educational Media)  
NIMH (National Institute of Mental Health)  
NIMIS (National Center of Educational Media and Materials for the Handicapped)  
PAIS (Public Affairs Information Service)  
Philosopher's Index  
Psychological Abstracts  
RILM Abstracts  
Social Sciences Citation Index  
Sociological Abstracts  
Sport  
U.S. Political Science Documents  
U.S. Public School Directory

## SCIENCES

Agricola  
ASFA (Aquatic Sciences and Fisheries Abstracts)  
BIOSIS (Biological Abstracts)  
Chemical Abstracts  
CHEMNAME  
CHEMSEARCH  
CHEMSIS  
Claims/Chem  
Claims/Chem/Uniterm  
Claims/Class  
Claims/U.S. Patents  
Cold Regions  
Commonwealth Agricultural Bureau Abstracts  
CRIS (Current Information Service – USDA)  
GEOARCHIVE  
GEOREF  
INSPEC  
IRL Life Sciences Collection  
Oceanic Abstracts  
Pacific Islands Ecosystems  
Patents (Pergamon International Information Corp.)  
Pollution Abstracts  
SCISEARCH (Science Citation Index)  
SPIN (Searchable Physics Information Notices)  
TROPAG (Abstracts on Tropical Agriculture)  
TSCA Initial Inventory

## TECHNOLOGY AND ENGINEERING

APILIT (American Petroleum Institute)  
APIPAT (American Petroleum Institute, Patents)  
APTIC (Air Pollution Technical Information Center)  
AQUACULTURE  
Aqualine  
BHRA Fluid Engineering  
COMPENDEX (Engineering Index)  
DICIS (Doane Agricultural Services)  
DOE Energy  
ELCOM (Electronics and Computers)  
ENERGYLINE (Energy Information Abstracts)  
ENVIROLINE (Environment Abstracts)  
Environmental Bibliography  
FOODS ADLIBRA  
FOREST PRODUCTS  
FSTA (Food Science & Technology Abstracts)  
INPADOC (International Patent Classification Center)  
ISMEC (Mechanical Engineering)  
METADEX (Metals Abstracts/Alloys Index)

MRIS (Maritime Research Information Service)  
Non-Ferrous Metals Abstracts  
PAPERCHEM (Institute of Paper Chemistry)  
PIRA (Paper and Board, Packaging Abstracts)  
RAPRA Abstracts  
SAE Abstracts (Society of Automotive Engineers)  
Safety Abstracts  
STANDARDS AND SPECIFICATIONS  
Surface Coatings Abstracts  
TITUS (Institut Textile de France)  
TRIS (Transportation Research Information System)  
WATER RESOURCES ABSTRACTS  
Weldasearch (Institute of Welding)  
WORLD ALUMINUM ABSTRACTS  
WORLD TEXTILES (World Textile Abstracts)

## MULTIDISCIPLINARY

ASI (American Statistics Index)  
Biography Master Index  
BOOK REVIEW INDEX  
BOOKSINFO  
BOOKS IN PRINT  
Boston Globe  
CDI (Comprehensive Dissertation Index)  
CIS (Congressional Information Service)  
CNI (Canadian News Index)  
Code of Federal Regulations Index  
CRECORD (Congressional Record Index)  
Conference Papers Index  
Encyclopedia of Associations  
Federal Register  
FEDEX (Energy Information Administration)  
Foundation Directory  
Foundation Grants Index  
GPO Monthly Catalog  
GPO Publications Reference File  
Grants  
LIBCON  
Magazine Index  
MARC & REMARC (Library of Congress)  
National Foundations  
National Newspaper Index  
New York Times Information Bank II  
NTIS (National Technical Information Service)  
Population Bibliography  
Quebec-Actualite  
SSIE (Smithsonian Science Information Exchange)  
State Publications Index  
United States Contract Awards  
VOTES (Roll Call Votes of U.S. Congress)

Source: *University Librarian*

## SPECIAL COLLECTIONS

Many rare and valuable materials are included in Special Collections, ranging from medieval manuscripts to modern limited editions, fine bindings, autographed copies, and letters of established authors. Because of their scarcity, value, or fragile nature access is limited. Below are brief notes on some of the more outstanding collections. Contact the Special Collections Librarian for further information.

### *BELLOC COLLECTION*

The library and personal papers of Hilaire Belloc (1870-1953). Over 8,100 volumes; 150 manuscripts; 6,000 letters, including correspondence with several outstanding literary figures.

### *CITYWIDE COORDINATING COUNCIL*

These archives contain materials documenting the Council's work in the court-ordered desegregation of the Boston Public Schools through busing.

### *CONGRESSMAN ROBERT F. DRINAN ARCHIVES*

These archives document the ten years (1970-1980) during which Robert F. Drinan, S.J. served as the representative of the fourth congressional district of Massachusetts. It includes legislative and general correspondence, committee hearings and reports, voting records, speeches, campaigns, and local office files.

### *FRANCIS THOMPSON COLLECTION*

This, the most complete collection of Thompsoniana in existence, includes first and rare editions, manuscripts, notebooks, letters, and other material relating to the poet, his time (1859-1907) and his work.

### *IRISH COLLECTION*

This collection contains rare and limited editions of works dating from the 17th century to the present, in all fields of knowledge, with emphasis on history and literature. These special holdings are augmented by large numbers of books in the Bapst circulating collection. Early manuscripts and letters, as well as those of modern authors, add depth and interest to the published works. The collection is a rapidly growing one, and benefits from generous donors; among them is the Eire Society of Boston, which recently deposited its archives here.

### *JESUITANA*

A collection of early and rare works by and about Jesuits. It includes *Lettere e Relazione Orientale*, a series of annual letters from Jesuit missionaries in Indo-China, Tibet, Japan, etc., published in Italy between 1590 and 1661. Most treasured is an original letter of St. Francis Xavier to John III, King of Portugal, dated January 31, 1552.

### *LITURGICAL COLLECTION*

This collection seeks to document and illustrate the transitions in Catholic thought and piety that have occurred in this century, especially in the area of the liturgy. It includes books, periodicals, music, religious art, devotional material, unpublished manuscripts, and the papers of those most responsible for initiating and implementing renewal.

### *MERTON COLLECTION*

The original typescript and galleys of *The Seven Storey Mountain* are gifts of Thomas Merton (1915-1968), along with galleys of *The Waters of Siloe*, and his own copy of *The Poetry and Prose of William Blake*. There is an autographed copy of each book published by him, and numerous periodicals containing the first printing of poems and essays, many of them uncollected.

### *MEYNELL COLLECTION*

The most extensive collection in the Western Hemisphere of the works of Wilfrid and Alice Meynell and three of their children — Everard, Viola, and Sir Francis — providing a well-rounded view of this remarkable family of poets, biographers, novelists, essayists, editors and publishers over a period of nearly 75 years (ca. 1875-1950).

### *MORRISSEY COLLECTION OF JAPANESE PRINTS*

Of particular value to those interested in the history of Japanese art this collection contains over 100 prints, paintings, and reproductions, Japanese artifacts, and several books. Especially noteworthy are landscape designs of Hiroshige (1797-1858) and Hokusai (1760-1849).

#### *PATMORE COLLECTION*

Coventry Patmore (1823-1896), poet, essayist, critic, close friend of Francis Thompson and of the Meynells, is represented here by numerous first editions, manuscripts, articles, book reviews and letters. Among the correspondents are Arnold, Browning, Carlyle, Emerson, Hawthorne, Rossetti, Tennyson and Thackeray.

#### *STOUT COLLECTION*

The library and papers of Rex Stout (1886-1975), creator of the Nero Wolfe mystery stories contain 1,054 volumes, including over 700 foreign editions in various languages; 125 literary manuscripts, many with the author's corrections; 7 cases of correspondence.

#### *WILLIAMS COLLECTION*

Approximately 10,000 books and pamphlets are contained in this collection, which provides valuable source material on the ethnology, social and natural history of the West Indies, with special emphasis on Jamaica. Some unusual items of Africana and Judaica are also included.

#### *THE BOSTON COLLEGE GUILD OF ST. LUKE OF BOSTON HEALTH ETHICS COLLECTION*

Initiated in 1974, this contains books, pamphlets, periodicals, reprints and audio-visual materials which concern the ethics of medicine and health care.

#### *RITA KELLEHER COLLECTION*

In recognition of her twenty-five years of service to the School of Nursing, including twenty years as Dean, this collection contains archival, historical, research, and other significant materials in nursing.

#### *NATIONAL HEALTH PLANNING INFORMATION CENTER*

The Boston College School of Nursing Library is one of the twenty six United States and European depositories for NHPIC non-copyrighted materials in microfiche format. These cover a variety of topics relevant to health planning and resources with a strong nursing component. Consult the Librarian and Reference Librarian for additional information in regard to the scope and use of this collection.

### **SPECIAL LIBRARY SERVICES**

#### *INTERLIBRARY LOAN*

The Interlibrary Loan Service is offered to students, faculty, administration and staff, to facilitate obtaining materials not available in the Boston College Libraries. Books, photocopies of journal articles, microfilm, theses, and government documents can be borrowed from other libraries. Except for unusual items, the waiting period is from one to four weeks; for anyone willing to use the material at the holding library, a computerized system will provide locations within twenty-four hours of the request. Request forms and further information are available from the reference staff in each library.

#### *BOSTON LIBRARY CONSORTIUM*

The library is a member of the Boston Library Consortium, a group of area libraries which includes Brandeis, Boston University, Tufts, Wellesley, Northeastern, MIT, Massachusetts State Library, Boston Public Library, and University of Massachusetts. Faculty and graduate students may apply for a Consortium borrowers card at the reference department in Bapst. The Consortium maintains a central office at the Boston Public Library, publishes a newsletter, and maintains the following committees: Directors, Acquisitions, Serials, Readers' Services, and Cataloging. Further information may be found in the User Guide and the Consortium Handbook, available in all libraries.

#### *UNITED STATES GOVERNMENT PUBLICATION*

In 1963 Boston College was designated one of the two depository libraries in this congressional district. This status entitles Boston College Libraries to receive on a selective basis United States government publications at no cost with the stipulation they be made available to the general public. The extensive collection is housed in each of the libraries on campus. Most of the material circulates in the same manner as books. Inquiries related to the retrieval and use of government documents should be directed to the Government Documents Department at Bapst Library.

#### *NEW ENGLAND LIBRARY INFORMATION NETWORK*

Through membership in the New England Library Information Network (NELINET), there is on-line access to publishing, cataloging, and inter-library loan location information from the data bank of OCLC, Inc. which contains over 7.6 million records from the Library of Congress and some 2,400 other contributing institutions.

*Source: University Librarian*

# ATHLETICS



**VARSITY SPORTS  
1980-81**

Men's Varsity	Participants	Women's Varsity	Participants
Baseball	25	-	-
Basketball	14	Basketball	14
Cross-Country	13	Cross-Country	12
-	-	Fencing	4
-	-	Field Hockey	31
Football	105	-	-
Golf	18	Golf	4
Ice Hockey	30	-	-
Lacrosse	30	Lacrosse	26
Sailing	10	Sailing	8
Skiing	13	Skiing	13
Soccer	25	Soccer	32
Swimming	25	Swimming & Diving	33
Tennis	10	Tennis	15
Track-Indoor	50	Track-Indoor	33
Track-Outdoor	50	Track-Outdoor	29
-	-	Volleyball	16
Wrestling	10	-	-
<b>Total</b>	<b>428</b>	<b>Total</b>	<b>270</b>

Source: Sports Information Office

**CLUB SPORTS  
1980-81**

Men's Club	Participants	Women's Club	Participants
Boxing	28	Ice Hockey	22
Rugby	60	Rugby	19
Volleyball	15	Softball	18
Waterpolo	15		
<b>Coed Club Sports</b>			
Judo			
Karate			
Volleyball			

Source: Sports Information Office

**INTRAMURALS  
1980-81**

Men			Women			Co-ed		
Sport	Teams	Participants	Sport	Teams	Participants	Sport	Teams	Participants
Basketball	64	655	Basketball	17	173	2 on 2		48
-			-			Golf		35
Handball	-	4	-			-		
Ice Hockey	15	235	-			-		
Racquetball			Racquetball			Racquetball		
Doubles	16	32	Doubles	14	28	Doubles	30	60
Singles	-	96	Singles	-	30	-		
Soccer	26	197	Soccer	2	22	-		
Squash	-	32	Squash	-	8	-		
-			-			Road Race	-	103
-			-			Softball	20	357
Tennis			Tennis			Tennis		
Doubles	32	64	Doubles	14	28	Doubles	16	32
Singles	-	32	Singles	-	48	-		
Touch Football	24	320	-			-		
-			-			Track	-	26
-			Volleyball	18	205	Volleyball	44	453
<b>Total</b>		<b>1,667</b>	<b>Total</b>		<b>542</b>	<b>Total</b>		<b>1,114</b>

Source: Sports Information Office

**Unstructured Recreation**

Badminton	Handball
Baseball	Jogging
Basketball	Lacrosse
Dance	Racquetball
Diving	Soccer
Exercise	Softball
Figure Skating	Swimming
Football	Tennis
Golf	Volleyball
Weightlifting	

**Lessons**

Exercise  
Fencing  
Figure Skating  
Golf  
Life Saving  
Modern Dance  
Racquetball  
Scuba Diving  
Squash  
Swimming  
Tennis  
Water Safety

Source: Sports Information Office



## VARSITY SPORTS RECORDS

Men's Records	1976-77 W-L-T	1977-78 W-L-T	1978-79 W-L-T	1979-80 W-L-T	1980-81 W-L-T
Football	8-3	6-5	0-11	5-6	7-4
Basketball	8-18	15-11	21-9	19-10	23-7
Ice Hockey	18-11-2	24-10	16-14	25-7-1	20-8-3
Wrestling	3-7	5-5	6-5	7-7	5-13
Soccer	6-7-1	6-9-1	13-5	9-6-5	15-3-3
Lacrosse	7-4	2-9	6-7	7-7	9-6
Tennis	11-1	11-1	11-0	9-4	11-1
Baseball	14-8	14-10-1	6-18	8-15	11-12
Swimming	4-6	7-4	8-4	5-6	7-1
Golf	5-7	7-7	5-8	8-7	2-6
Women's Records					
Basketball	7-6	4-10	5-13	11-12	12-11
Field Hockey	6-3-1	7-3-2	6-3-3	4-12-2	5-10-2
Swimming	12-0	10-0	5-7	5-5	6-2
Tennis	5-1	7-2	8-11	4-8	4-3
Volleyball	7-5	12-7	19-2	5-11	8-15
Lacrosse	-	5-3	7-2	9-3	8-5
Soccer	-	-	-	-	10-4

Source: Sports Information Office

## VARSITY FOOTBALL SCHEDULES

Fall 1981		
Sept. 19	Texas A&M	6:00 p.m.
Sept. 26	at North Carolina	1:00 p.m.
Oct. 3	West Virginia	6:00 p.m.
Oct. 10	at Penn State	1:30 p.m.
Oct. 17	Navy	1:30 p.m.
Oct. 24	at Army	2:00 p.m.
Oct. 31	Pittsburgh	1:30 p.m.
Nov. 7	Massachusetts	1:30 p.m.
Nov. 14	at Syracuse	1:30 p.m.
Nov. 21	Rutgers	1:30 p.m.
Nov. 28	at Holy Cross	1:00 p.m.

	1982		1983		1984	
Sept. 11	at Texas A&M		Sept. 17	at Rutgers	Sept. 15	Alabama
Sept. 18	OPEN		Sept. 24	West Virginia	Sept. 22	North Carolina
Sept. 25	at Navy		Oct. 1	Temple	Sept. 29	at Miami
Oct. 2	Temple		Oct. 8	at Yale	Oct. 6	OPEN
Oct. 9	at West Virginia		Oct. 15	at Air Force	Oct. 13	OPEN
Oct. 16	Rutgers		Oct. 22	at Alabama	Oct. 20	at West Virginia
Oct. 23	at Army		Oct. 29	Penn State	Oct. 27	Rutgers
Oct. 30	Penn State		Nov. 5	at Army	Nov. 3	at Penn State
Nov. 6	at Massachusetts		Nov. 12	at Syracuse	Nov. 10	Army
Nov. 13	Syracuse		Nov. 19	Massachusetts	Nov. 17	Syracuse
Nov. 20	OPEN		Nov. 26	at Holy Cross	Nov. 24	at Massachusetts
Nov. 27	Holy Cross				Dec. 1	Holy Cross

Source: Sports Information Office

**VARSITY HOCKEY SCHEDULE  
1981-82**

Nov. 14	Salem State	Jan. 12	Providence
Nov. 20	Holy Cross	Jan. 16	at Cornell
Nov. 24	Princeton	Jan. 19	at Yale
Dec. 1	Brown	Jan. 22	RPI
Dec. 4	at St. Lawrence	Jan. 24	at Providence
Dec. 5	at Clarkson	Jan. 27	Dartmouth
Dec. 8	Maine	Feb. 1	at Beanpot Tournament
Dec. 10	Northeastern	Feb. 4	New Hampshire
Dec. 20	Merrimack	Feb. 8	at Beanpot Finals
Dec. 29	at I LOVE	Feb. 12	Colgate
⊕	NEW YORK	Feb. 16	at Maine
Dec. 30	Tournament	Feb. 20	at Army
Jan. 2	at New Hampshire	Feb. 23	Vermont
Jan. 5	at Harvard	Feb. 27	at Northeastern
Jan. 9	Boston University	Mar. 3	at Boston University

Source: Sports Information Office

**VARSITY BASKETBALL SCHEDULE\*  
1981-82**

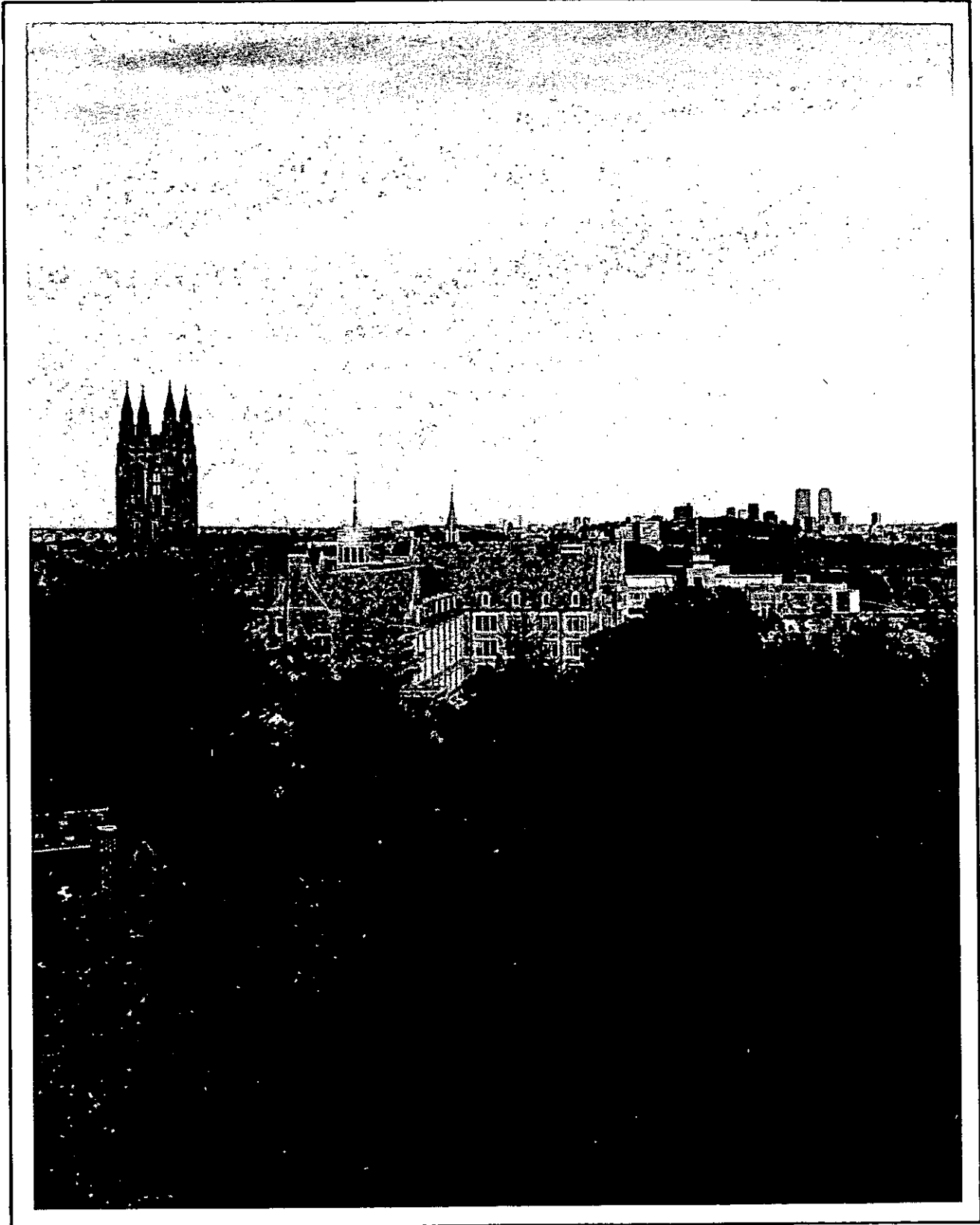
Nov. 29	Bentley	Jan. 26	at Rhode Island
Dec. 2	Stonehill	Jan. 28	Northeastern
Dec. 4	<b>Villanova (home game)</b>	Jan. 30	Merrimack
	at Meadowlands	Feb. 3	<b>St. John's</b>
Dec. 9	Brown	Feb. 6	<b>Connecticut</b>
Dec. 12	at New Hampshire	Feb. 10	at <b>Providence</b>
Dec. 19	at Fairfield	Feb. 13	Holy Cross
Dec. 29	Gator Bowl Tournament	Feb. 17	<b>Georgetown</b>
⊕		Feb. 20	at <b>St. John's</b>
Dec. 30	at Jacksonville, FL	Feb. 22	<b>Syracuse</b>
Jan. 6	at <b>Villanova</b>	Feb. 24	St. Anselm's
Jan. 10	at <b>Georgetown</b>	Feb. 27	at <b>Seton Hall</b>
Jan. 13	at <b>Connecticut</b>	Mar. 4	<b>Big East Tournament</b>
Jan. 16	<b>Providence</b>	-	
Jan. 18	<b>Seton Hall</b>	Mar. 6	at Hartford, CT
Jan. 23	at <b>Syracuse</b>		

\*BIG EAST games appear in bold type.

Source: Sports Information Office

# NOTES

# GENERAL INFORMATION



**INDEX OF  
HONORARY DEGREES  
AS GRANTED BY BOSTON COLLEGE**

D.A.	Doctor of Arts
D.B.A.	Doctor of Business Administration
D.C.S.	Doctor of Commercial Science
D.E.Sc.	Doctor of Engineering Science
D.F.A.	Doctor of Fine Arts
D.Journ.	Doctor of Journalism
D.Mus.	Doctor of Music
D.N.S.	Doctor of Nursing Science
D.Pub.Adm.	Doctor of Public Administration
D.Sc.	Doctor of Science
D.Sc.Ed.	Doctor of Science in Education
D.Sc.L.	Doctor of the Science of Law
D.Sc.T.	Doctor of the Science of Theology
D.S.S.	Doctor of Social Science
H.D.	Doctor of History
Hist.Phil.D.	Doctor of History in Philosophy
J.U.D.	Doctor of Civil and Canon Laws
L.H.D.	Doctor of Humane Letters
LL.D.	Doctor of Laws
Litt.D.	Doctor of Letters, Doctor of Literature
R.D.	Doctor of Religion
S.T.D.	Doctor of Sacred Theology
Sc.D.	Doctor of Science

*Source: Commencement Programs, 1952-1981*

**HONORARY DEGREES AWARDED BY BOSTON COLLEGE  
1952-1981**

**1952**

Gregory Peter XV Cardinal Agagianian, LL.D.  
(January 14, 1952)  
James B. Connolly, Litt.D.  
James M. O'Neill, LL.D.  
Most Rev. Thomas F. Markham, LL.D.\*  
Rt. Rev. Thomas J. Riley, LL.D.  
James J. Ronan, LL.D.

**1953**

Dorothy L. Book, LL.D.  
Most Rev. James L. Connolly, LL.D.  
Clifford J. Laube, LL.D.  
Francis J. O'Halloran, A.M.  
Most Rev. Leonard J. Raymond, LL.D.\*  
Alex Ross, A.M.  
John C. H. Wu, LL.D.

**1954**

Edward H. Chamberlin, LL.D.  
John J. Hearne, LL.D.\*  
James W. Manary, Sc.D.  
Thomas A. Printon, LL.D.  
Ven. Bro. William Sheehan, C.F.X., LL.D.  
Most Rev. Christopher J. Weldon, LL.D.  
Louis de Wohl, Litt.D.  
William J. O'Keefe, LL.D. (November 21, 1954)

**1955**

Fred J. Driscoll, LL.D.  
Christian A. Herter, LL.D.  
Edward A. Hogan, Jr., LL.D.\*  
Rear Adm. Bartholomew W. Hogan, Sc.D.  
John B. Hynes, LL.D.  
His Beatitude Maximus IV, LL.D.  
(August 23, 1955)  
Valerian Cardinal Gracias, LL.D.  
Russel Kirk, Litt.D.  
Edward A. Sullivan, LL.D.

**1956**

Bartholomew A. Brickley, LL.D.  
Peter J. W. Debye, Sc.D.  
Most Rev. Frederick A. Donaghy, LL.D.  
John F. Kennedy, LL.D.\*  
John W. King, LL.D.  
Charles Munch, D.Mus.  
Edward F. Williams, LL.D.

\*Commencement Speaker

**1957**

Wallace E. Carroll, LL.D.  
Arthur J. Kelly, LL.D.  
Augustus C. Long, LL.D.\*  
Adrian O'Keeffe, LL.D.  
Very Rev. Msgr. Patrick W. Skehan, LL.D.  
Nils Y. Wessell, LL.D.

**1958**

Most Rev. Amleto G. Cicognani, LL.D. (April 21, 1958)  
Carl J. Gilbert, LL.D.  
Paul Horgan, Litt.D.  
Barnaby C. Keeney, LL.D.\*  
Henry M. Leen, LL.D.  
Jacques Maritain, LL.D.  
Raissa Maritain, LL.D.  
Harold Marston Morse, D.Sc.  
Rev. John B. Sheerin, C.S.P., LL.D.  
Francis Cardinal Spellman, LL.D. (December 8, 1958)

**1959**

His Excellency Sean T. O'Kelly, LL.D. (March 22, 1959)  
Ernest Henderson, LL.D.  
Rev. John LaFarge, S.J., LL.D.  
Henry Cabot Lodge, LL.D.  
George Meany, LL.D.  
Carlos P. Romulo, LL.D.\*  
Helen C. White, Litt.D.

**1960**

Marian Anderson, D.Mus.  
J. Peter Grace, LL.D.  
Caryl P. Haskins, LL.D.  
Robert F. Kennedy, LL.D.  
Charles Malik, LL.D.\*  
Most Rev. Russell J. McVinney, LL.D.  
Samuel Eliot Morison, LL.D.  
Rt. Rev. Matthew P. Stapleton, LL.D.  
Rev. Henry M. Brock, S.J., D.Sc. (October 12, 1960)

**1961**

Allen W. Dulles, LL.D.  
Anthony Julian, LL.D.  
Robert D. Murphy, LL.D.\*  
Louis R. Perini, LL.D.  
Abraham Ribicoff, LL.D.  
Rt. Rev. Robert J. Sennott, LL.D.  
Edward Teller, LL.D.

1962

Detlev W. Bronk, D.Sc.\*  
Ralph J. Bunche, LL.D.  
Christopher J. Duncan, M.D., LL.D.  
Sir Alec Guinness, D.F.A.  
Rt. Rev. Francis J. Lally, Litt.D.  
Ralph Lowell, LL.D.  
Phyllis McGinley, Litt.D.  
Perry G. Miller, Litt.D.

1963

Augustin Cardinal Bea, S.J., J.U.D. (March 26, 1963)  
Rev. Edward B. Bunn, S.J., LL.D. (April 20, 1963)  
Lady Barbara Ward Jackson, Litt.D. (April 20, 1963)  
Nathan Marsh Pusey, L.H.D. (April 20, 1963)  
Bruce Catton, Litt.D.  
Anthony Joseph Celebrezze, LL.D.\*  
Arthur Joseph Goldberg, LL.D.  
John Jay McCloy, LL.D.  
James Barrett Reston, LL.D.  
Rt. Rev. John Joseph Ryan, L.H.D.  
Jose Luis Sert, Litt.D.  
Joseph Leo Sweeney, LL.D.  
Robert Clifton Weaver, LL.D.  
James Edwin Webb, D.Sc.

1964

John Coleman Bennett, LL.D.  
Henri Maurice Peyre, LL.D.  
Most Rev. Ernest John Primeau, LL.D.  
Sidney R. Rabb, L.H.D.  
Paul Anthony Samuelson, LL.D.  
Rev. Joseph L. Shea, S.J., LL.D.  
Robert Sargent Shriver, Jr., LL.D.\*  
Mary Sullivan Stanton, LL.D.

1965

John P. Birmingham, LL.D.  
Robert McAfee Brown, LL.D.  
J.N. Douglas Bush, Litt.D.  
Victor L. Butterfield, L.H.D.  
John T. Connor, LL.D.  
Edith Green, LL.D.  
Rev. John Courtney Murray, S.J., L.H.D.\*  
Rt. Rev. Lawrence J. Riley, LL.D.  
Alan T. Waterman, D.Sc.

\*Commencement Speaker

1966

Most Rev. John W. Comber, M.M., L.H.D.  
Edward F. Gilday, L.H.D.  
Edward M. Kennedy, LL.D.  
Francis Keppel, LL.D.\*  
Mother Eleanor M. O'Byrne, R.S.C.J., LL.D.  
Stephen P. Mugar, LL.D.  
Abram L. Sachar, L.H.D.  
Rene Wellek, Litt.D.  
George Wells Beadle, D.Sc.  
(November 12, 1966)  
William Bosworth Castle, M.D., L.H.D.  
(November 12, 1966)  
Donald Frederick Hornig, LL.D.  
(November 12, 1966)  
James Alfred Van Allen, D.Sc.  
(November 12, 1966)

1967

Sarah Caldwell, Litt.D.  
Richard Palmer Chapman, LL.D.  
Very Rev. John Francis Fitzgerald, C.S.P., L.H.D.  
John Kenneth Galbraith, LL.D.  
John William Gardner, LL.D.\*  
Everett Cherrington Hughes, LL.D.  
John Anthony Volpe, LL.D.

1968

Kingman Brewster, Jr., LL.D.\*  
Rev. Henri de Lubac, S.J., L.H.D.  
Erwin N. Griswold, LL.D.  
Rita P. Kelleher, D.Sc.  
Most Rev. John J. McEleney, S.J., LL.D.  
Cornelius W. Owens, LL.D.  
James J. Shea, Sr., LL.D.  
Roger J. Traynor, LL.D.

1969

R. Buckminster Fuller, D.F.A.\*  
Katharine Graham, D.Journ.  
Philip J. McNiff, L.H.D.  
Talcott Parsons, D.S.S.  
A. Philip Randolph, LL.D.  
Henry Lee Shattuck, D.C.S.  
Terence Cardinal Cooke, LL.D.

**1970**

James Edward Allen, Jr., D.Sc.Ed.  
 Rt. Rev. John Melville Burgess, LL.D.  
 Joan Ganz Cooney, D.Sc.Ed.  
 Sterling Dow, L.H.D.  
 Hartford Nelson Gunn, Jr., L.H.D.  
 Rev. Bernard Joseph Francis Lonergan, S.J., Hist.Phil.D.  
 Elliot Norton, L.H.D.  
 Perry Townsend Rathbone, D.F.A.  
 Earl Warren, D.Sc.L.\*

**1971**

Walter Jackson Bate, H.D.  
 Andrew Felton Brimmer, S.S.D.  
 Rev. Msgr. George William Casey, Litt.D.  
 Mircea Eliade, R.D.  
 Eli Goldston, LL.D.  
 Elma Lewis, D.F.A.  
 Michael Joseph Mansfield, LL.D.\*  
 William James McGill, S.S.D.  
 Most Rev. Humberto Sousa Medeiros, S.T.D.  
 Walter George Muelder, D.Sc.T.  
 Leverett Saltonstall, LL.D.

**1972**

Mary Ingraham Bunting, D.Sc.  
 Arthur Fiedler, D.Mus.  
 Northrop Frye, L.H.D.  
 John James Griffin, D.C.S.  
 Sir William Arthur Lewis, L.H.D.  
 Louis Martin Lyons, D.Journ.  
 Rev. John Anthony McCarthy, S.J., Litt.D.  
 Hildegard Elizabeth Peplau, D.N.S.  
 Adlai Ewing Stevenson, III, LL.D.\*  
 Walter Edward Washington, LL.D.

**1973**

A.J. Antoon, L.H.D.  
 Harold Bloom, L.H.D.  
 Fred J. Borch, D.B.A.  
 Vernon E. Jordan, Jr., LL.D.  
 John George Kemeny, D.Sc.\*  
 Rev. Daniel Linehan, S.J., D.Sc.  
 Thomas Philip O'Neill, Jr., LL.D.

**1974**

Soia Mentschikoff, LL.D.\*  
 Thomas L. Phillips, D.B.A.  
 Carl Thomas Rowan, L.H.D.  
 Thomas Paul Salmon, LL.D.  
 Sir Ronald Syme, L.H.D.  
 Henry Bradford Washburn, Jr., L.H.D.

**1975**

Melnea A. Cass, L.H.D.  
 Silvio O. Conte, LL.D.  
 John Thomas Dunlop, LL.D.  
 Rev. Francis J. Gilday, S.J., L.H.D.  
 Edward Lewis Hirsh, L.H.D.  
 Paul Ricoeur, L.H.D.\*  
 Vincent Charles Ziegler, D.B.A.

**Bicentennial Convocation**  
**Sept. 28, 1975**

Thomas Joseph Galligan, Jr., D.B.A.  
 Oscar Handlin, L.H.D.  
 William J. Harrington, M.D., D.Sc.  
 Edward Hirsh Levi, LL.D.  
 Rev. Michael Patrick Walsh, S.J.,  
 L.H.D.  
 Mary Lou Williams, D.A.

**1976**

Abram Thurlow Collier, D.B.A.  
 John Hope Franklin, L.H.D.  
 Rev. Martin Patrick Harney, S.J., H.D.  
 Mildred Fay Jefferson, M.D., D.Sc.  
 Asa Smallidge Knowles, D.Sc.Ed.  
 Joseph Francis Maguire, LL.D.  
 Daniel Patrick Moynihan, LL.D.\*

**1977**

Rev. Raymond Edward Brown, Litt.D.\*  
 Gerhard D. Bleicken, LL.D.  
 Alice Bourneuf, D.Sc.  
 James F. McDonough, M.D., D.Sc.  
 Maria Tallchief Paschen, D.A.  
 Michael Joseph Walsh, Litt.D.

\*Commencement Speaker



1978

Bruno Bettelheim, Litt.D.  
Rev. Charles F. Donovan, S.J., L.H.D.  
Charles D. Ferris, LL.D.\*  
Marvin E. Frankel, LL.D.  
John William McDevitt, LL.D.  
Leo Perlis, D.S.S.

1980

Germaine Bree, Litt.D.\*  
Albert M. Folkard, L.H.D.  
Edward J. King, D. Pub. Admn.  
Joseph Cardinal Malula, LL.D.  
Bernard J. O'Keefe, D.E.Sc.  
Kevin H. White, LL.D.

1979

Dorothy Baker, D.S.S.\*  
Edward Patrick Boland, LL.D.  
George P. Donaldson, LL.D.  
Richard Ellmann, L.H.D.  
Robben W. Fleming, L.H.D.  
Walter F. Mondale, LL.D.\*  
David S. Nelson, LL.D.\*

1981

Rev. Joseph Delphis Gauthier, S.J., L.H.D.  
Margaret M. Heckler, LL.D.  
Rose Fitzgerald Kennedy, L.H.D.  
Donald F. McHenry, LL.D.  
Joseph Harry Silverstein, D.A.  
Paul Donavon Sullivan, D.S.S.  
Thomas P. O'Neill, Jr., The Ignatius Medal\*

\*Commencement Speaker

Source: Secretary of the University

### FOUNDER OF BOSTON COLLEGE

**Rev. John McElroy, S.J.**  
**Pastor, Immaculate Conception Parish, Boston**  
**1861-1863**

### PRESIDENTS OF BOSTON COLLEGE

1. John Bapst, S.J.	1863-1869	13. Thomas I. Gasson, S.J.	1907-1914
2. Robert W. Brady, S.J.	1869-1870	14. Charles W. Lyons, S.J.	1914-1919
3. Robert Fulton, S.J.	1870-1880	15. William Devlin, S.J.	1919-1925
4. Jeremiah O'Conner, S.J.	1880-1884	16. James H. Dolan, S.J.	1925-1932
5. Edward V. Boursaud, S.J.	1884-1887	17. Louis J. Gallagher, S.J.	1932-1937
6. Thomas H. Stack, S.J.	1887	18. William J. McGarry, S.J.	1937-1939
7. Nicholas Russo, S.J.	1887-1888	19. William J. Murphy, S.J.	1939-1945
8. Robert Fulton, S.J.	1888-1991	20. William L. Keleher, S.J.	1945-1951
9. Edward I. Devitt, S.J.	1891-1894	21. Joseph R.N. Maxwell, S.J.	1951-1958
10. Timothy Brosnahan, S.J.	1894-1898	22. Michael P. Walsh, S.J.	1958-1968
11. W.G. Read Mullan, S.J.	1898-1903	23. W. Seavey Joyce, S.J.	1968-1972
12. William F. Gannon, S.J.	1903-1907	24. J. Donald Monan, S.J.	1972-

Source: Secretary of the University

## TYPES OF DEGREES CONFERRED AT BOSTON COLLEGE

Bachelor of Arts (A.B.)  
Bachelor of Science (B.S.)  
Master of Arts (M.A.)  
Master of Arts in Teaching (M.A.T.)  
Master of Business Administration (M.B.A.)  
Master of Education (M.Ed.)  
Master of Science (M.S.)  
Master of Science in Teaching (M.S.T.)  
Master of Social Work (M.S.W.)  
Certificate of Advanced Educational Specialization (C.A.E.S.)  
Doctor of Philosophy (Ph.D.)  
Doctor of Law (J.D.)  
Doctor of Education (D.Ed.)  
Doctor of Social Work (D.S.W.)

## ACCREDITATION AND MEMBERSHIPS OF THE UNIVERSITY

### Accrediting Agencies

American Assembly of Collegiate Schools of Business  
American Bar Association  
American Chemical Society  
Association of American Law Schools  
Council on Social Work Education  
Interstate Certification Compact  
National Council of Accreditation of Teacher Education  
National League for Nursing  
New England Association of Schools and Colleges

### Association Memberships\*

American Association of Colleges of Nursing	Council for Exceptional Children
American Association of College Registrars and Admissions Officers	Council of Graduate School
American Association of Colleges for Teacher Education	International Association of Schools of Social Work
American Association of Comparative Law	International Association of Universities
American Association for Higher Education	International Federation of Catholic Universities
American Association of University Women	Jesuit Student Personnel Association
American Council on Education	National Association of College Admissions Counselors
American Educational Research Association	National Association of College and University Business Officers
American Public Welfare Association	National Association of Independent Colleges and Universities
Association of American Colleges	National Association of Social Workers
Association of Catholic Colleges and Universities	National Association of Student Financial Aid Administrators
Association of Collegiate Schools of Planning	National Association of Student Personnel Administrators
Association for Continuing Higher Education	National Conference of Catholic Charities
Association of Independent Colleges and Universities in Massachusetts	National Conference of Social Welfare
Association for Institutional Research	National League for Nursing
Association of Jesuit Colleges and Universities	New England Educational Research Organization
Association of Urban Universities	North American Association of Summer Sessions
Boston Library Consortium	Order of the Coif**
Boston Theological Institute	Phi Beta Kappa**
The College Board	
Conference of Deans of Schools of Social Work	
Council for Advancement and Support of Education	

\*The above listing is meant only to be representative of the major types of memberships to which the University belongs.

\*\*A complete listing of honor societies to which the University belongs may be found in the University Student Guide.

Source: Deans' Offices

## ACADEMIC DEPARTMENT LOCATIONS

Accounting Department	Fulton 400
Administrative Sciences Department	Fulton 301C
Arts and Sciences	Gasson 103
Biology Department	Higgins 321
Center for East Europe, Russia and Asia	Carney 201A
Chemistry Department	Devlin 223
Classical Studies Department	Carney 124
Computer Sciences Department	Fulton 406D
Counseling Psychology	McGuinn 314
Counselors:	
Arts and Sciences	Gasson 108
Education	Campion 301
Management	Fulton 205
Nursing	Cushing 103
Economics Department	Carney 131
Education	Campion 103-104A
Educational Foundations Program	Campion 310
English Department	Carney 450
Evening College	Fulton 317
Finance Department	Fulton 310
Fine Arts Department	Barry Pavilion 216, Newton Campus
General Management Program	Fulton 219
Geology and Geophysics Department	Devlin 209
Germanic Studies Department	Carney 326
Graduate Arts and Sciences	McGuinn 221A
History Department	Carney 115
Honors Programs:	
Arts and Sciences	Gasson 111
Education	Campion 104A
Management	Fulton 400
Instructional Leadership and Admin. Program	McGuinn 603
Law School	Stuart M309, Newton Campus
Law Department	Fulton 403
Management Center	Fulton 405
Marketing Department	Fulton 303
Mathematics Department	Carney 317
Music Program	St. Mary's House, Newton Campus
Nursing	Cushing 220
Organizational Studies Program	Fulton 214B
Philosophy Department	Carney 272
Physics Department	Higgins 355
Political Science Department	McGuinn 200
Psychology Department	McGuinn 349

Religious Education and Pastoral Ministry, Institute of  
Romance Languages and Literatures Department  
Slavic and Eastern Languages Department  
Social Work Graduate School  
Sociology Department  
Special Education and Rehabilitation Program  
Speech Communication and Theatre  
Summer Session  
Theology Department

31 Lawrence Ave.  
Carney 333  
Carney 236  
McGuinn 132  
McGuinn 426  
McGuinn B14  
Lyons 214B  
McGuinn 400  
Carney 418

*Source: Registrar*

## SOURCES

Academic Vice President  
Admissions  
Alumni Association  
Buildings and Grounds  
Bureau of Conferences  
Controller's Office  
Deans' Offices'  
Development Office  
Dining Department  
Financial Aid Office  
Office of Financial Vice President and Treasurer  
Health Services Office  
Housing Office  
Office of Student Programs and Resources  
Personnel Relations  
President's Office  
Registrar  
Research Administration  
Secretary of the University  
Space Management  
Sports Information Office  
Summer Session Office  
Systems and Records, University Relations  
University Librarian

*N.B. Sources are responsible for the accuracy and completeness  
of data submitted for publication.*

*Special Thanks*

*to*

*Photos: Lee Pellegrini,*

*Cover: Compliments of The Boston College Stylus, February, 1958*

*Published by: ZBR Publications, Inc.  
3 Industrial Way  
Wilmington, MA 01887*

## ACADEMIC CALENDAR

1981-82	First Semester	1982-83
Aug. 29-Sept. 1	Freshmen and Transfer Orientation	Aug. 29-Sept. 1
Sept. 1	Registration for Students not Pre-registered	Sept. 1
Sept. 2	Classes begin	Sept. 2
Sept. 2	Faculty Convocation	Sept. 3
Sept. 7	Labor Day — No Classes	Sept. 6
Oct. 12	Columbus Day — No Classes	Oct. 11
Nov. 11	Veteran's Day — No Classes	Nov. 11
Nov. 25	Thanksgiving Holiday begins at Noon	Nov. 24
Dec. 10-11	Study Days — No Undergraduate Classes	Dec. 9-10
Dec. 12-18	Term Examinations	Dec. 11-17
Dec. 19-Jan. 17	Holidays	Dec. 18-Jan. 17
<b>Second Semester</b>		
Jan. 18	Classes begin	Jan. 17
Feb. 15-19	Winter Vacation	Feb. 21-25
Apr. 8-12	Easter Recess	Mar. 31-Apr. 4
Apr. 19	Patriot's Day — No Classes	Apr. 18
May 4-5	Study Days — No Undergraduate Classes	May 3-4
May 6-12	Term Examinations	May 5-11
May 24	Commencement	May 23

*Source: Office of the Academic Vice President*

# NOTES